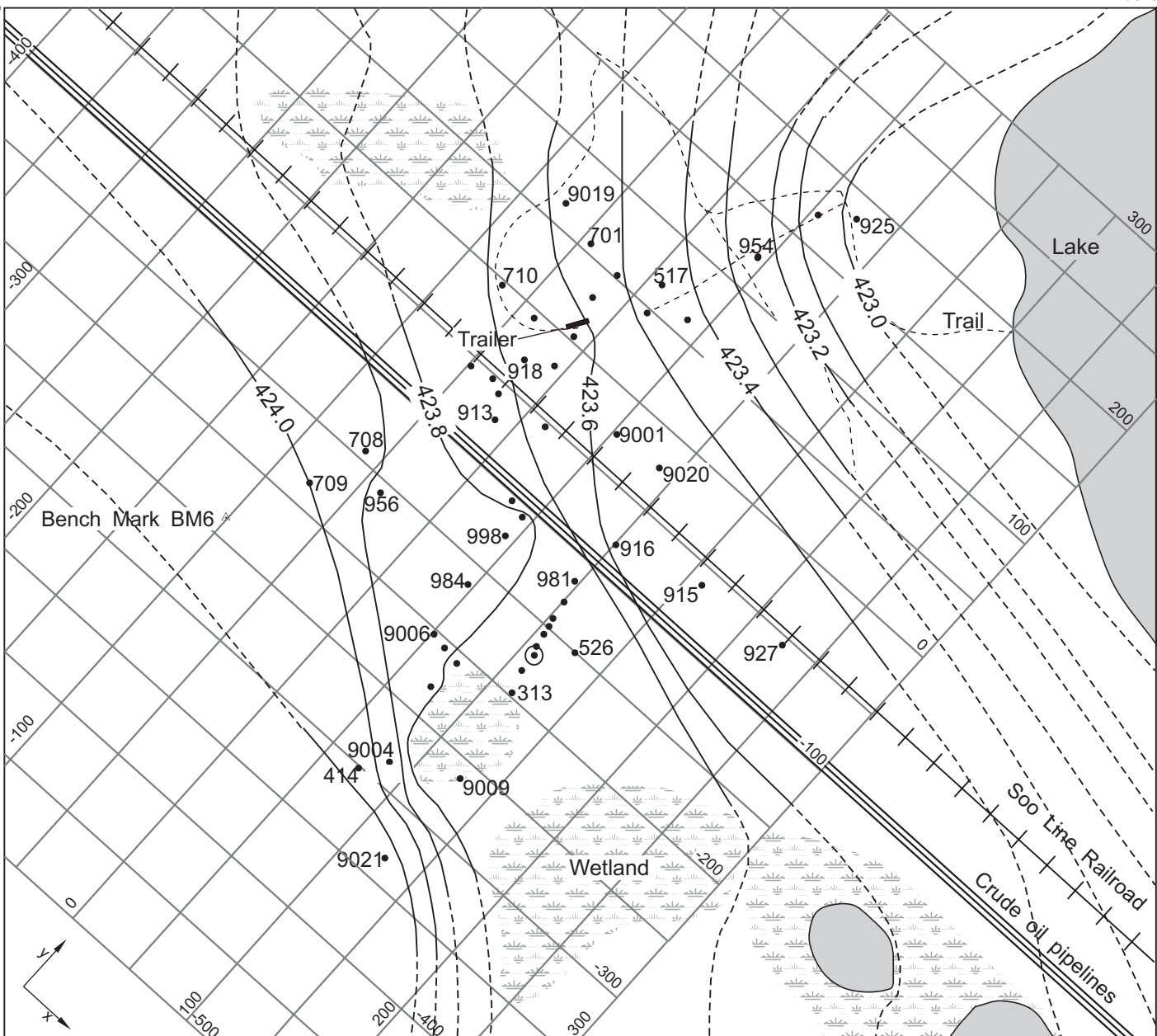


95°5'40"

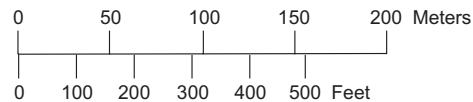
95°5'4"

47°34'32"



Base and hydrology digitized
 from U.S. Geological Survey
 Wilton 1:24,000, 1972
 Albers Equal-Area Conic Projection
 Standard Parallels 44°15' and 48°15',
 Central Meridian 94°00'

SCALE



EXPLANATION

- 709 Observation well and well number
- 423.6 --- Water-table contours for September 1996, in meters above NGVD.
Dashed contours indicate greater uncertainty.

Water-table map for the Bemidji crude-oil research site, September 3-17, 1996.

47°34'14"