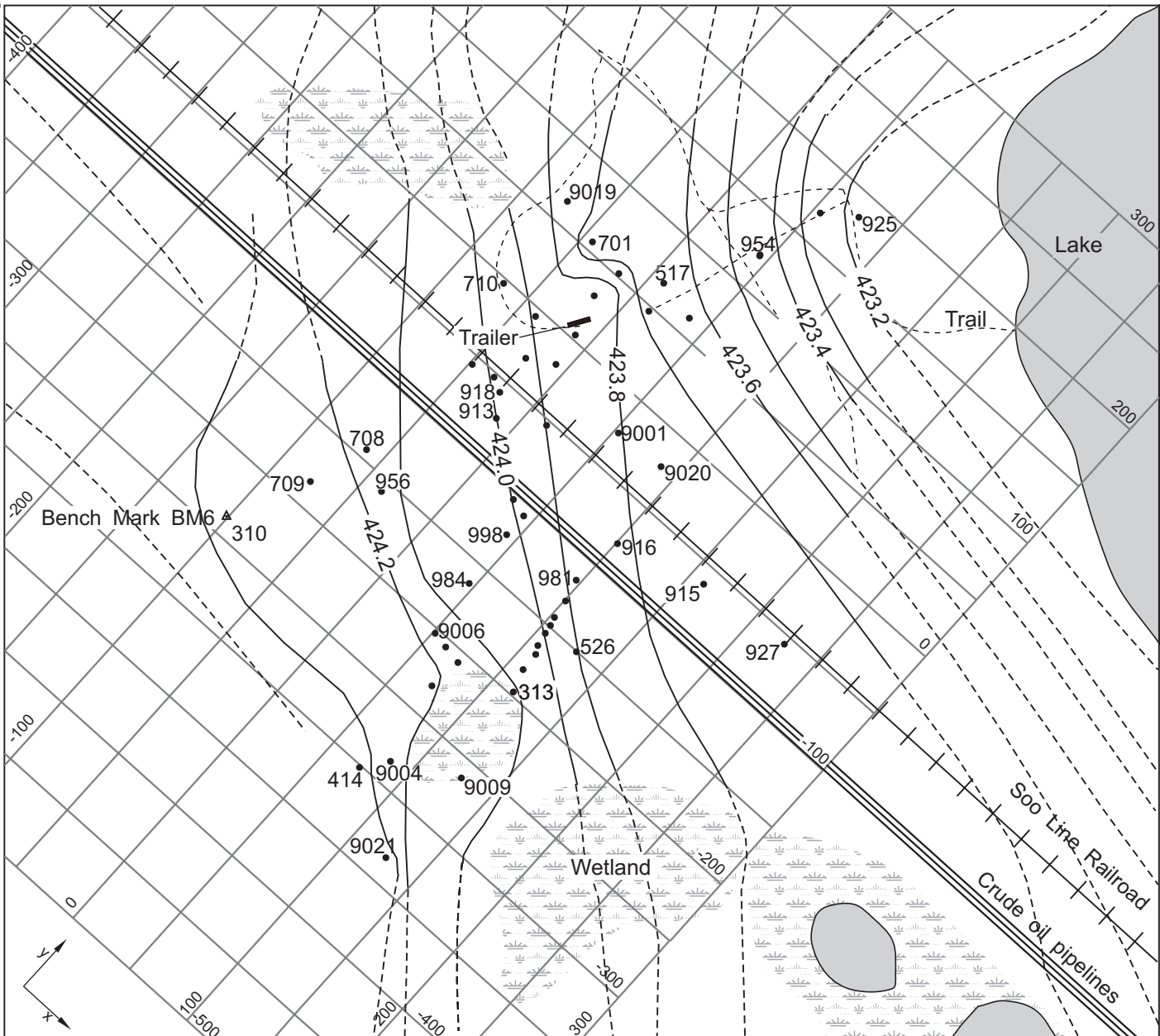


95°5'40"

95°5'4"

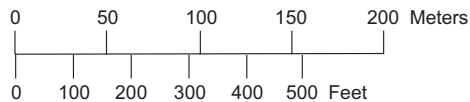
47°34'32"



47°34'14"

Base and hydrology digitized
 from U.S. Geological Survey
 Wilton 1:24,000, 1972
 Albers Equal-Area Conic Projection
 Standard Parallels 44°15' and 48°15',
 Central Meridian 94°00'

SCALE



EXPLANATION

- 709 Observation well and well number
- 423.6--- Water-table contours for August 1997, in meters above NGVD. Dashed contours indicate greater uncertainty.

Water-table map for the Bemidji crude-oil research site, August 9, 1997.