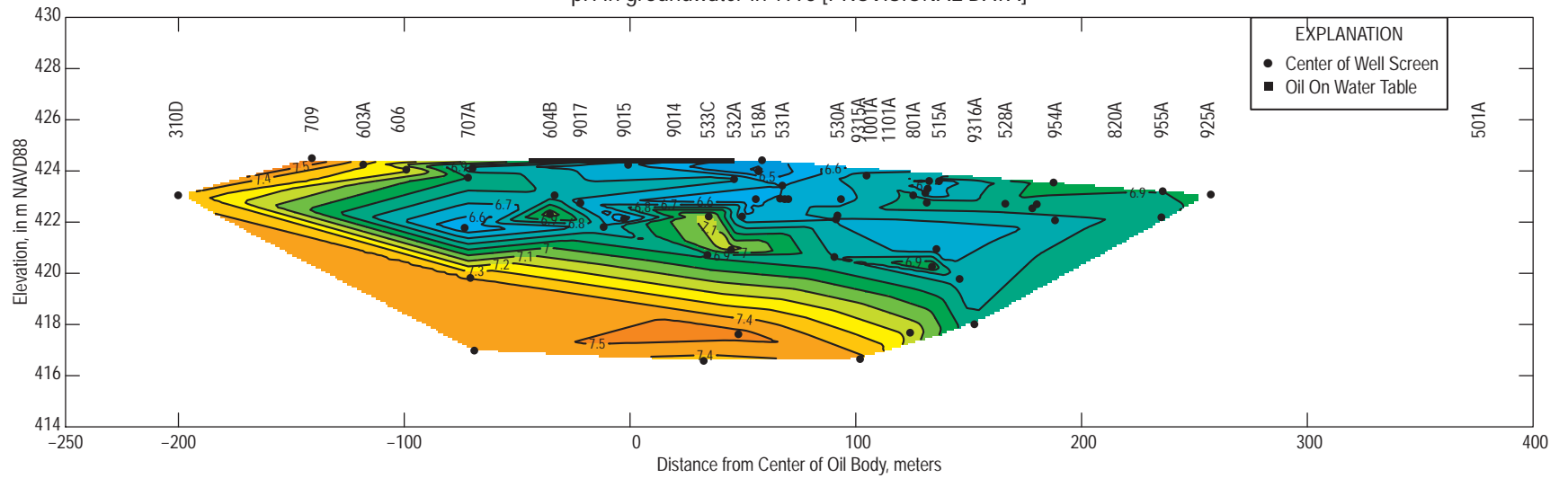
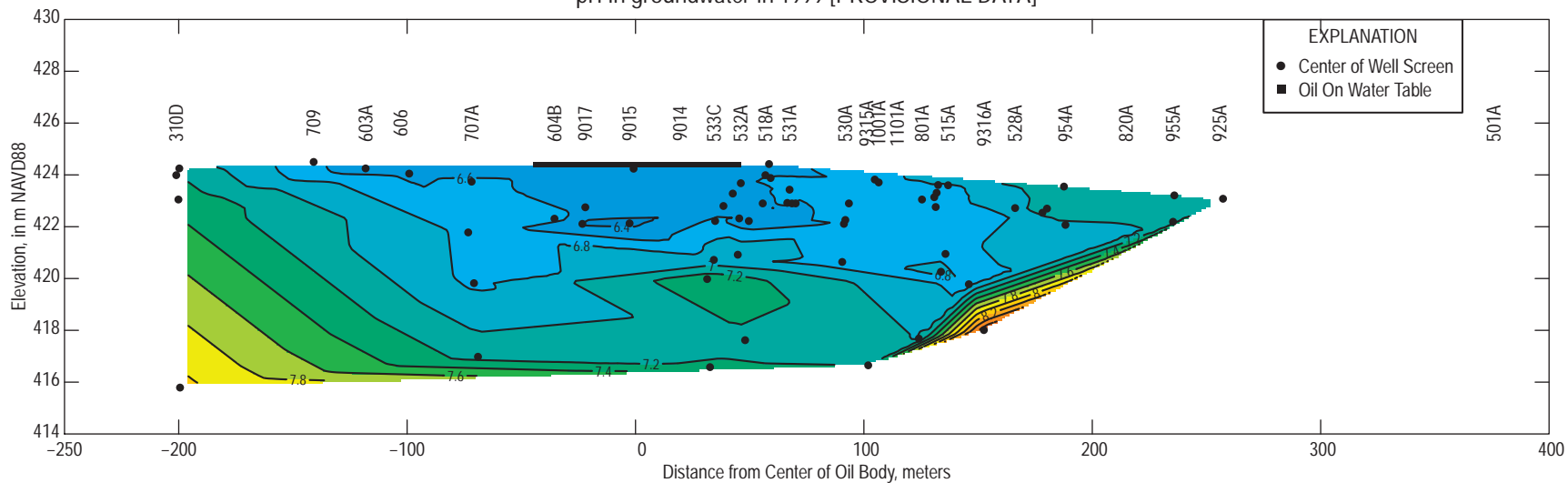


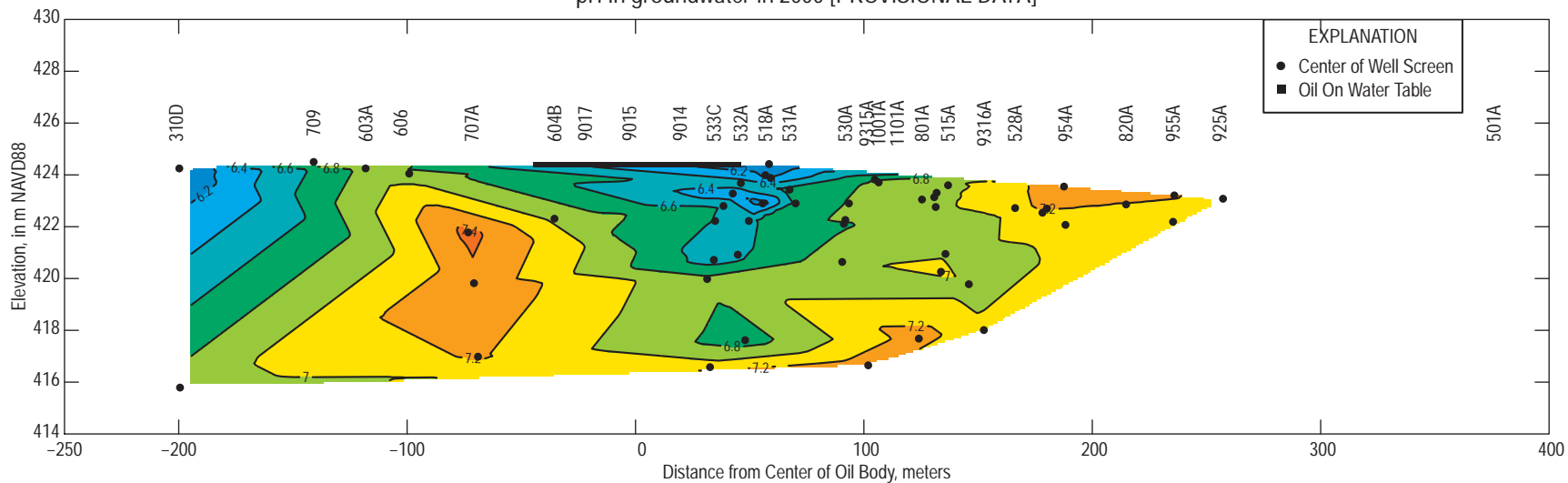
pH in groundwater in 1998 [PROVISIONAL DATA]



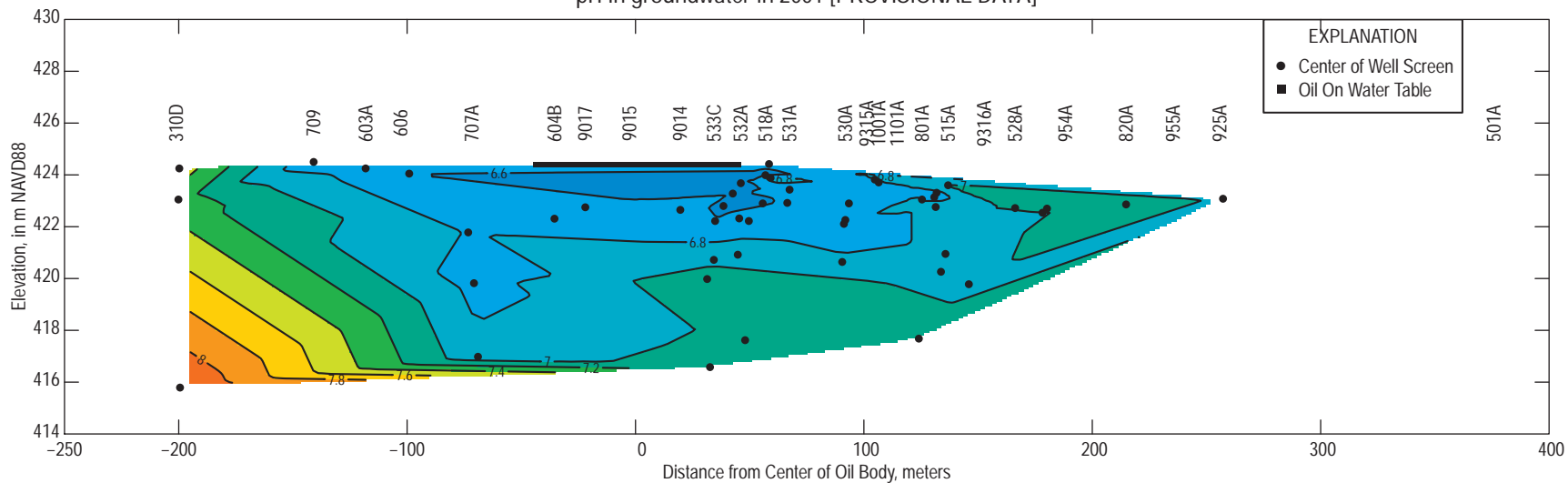
pH in groundwater in 1999 [PROVISIONAL DATA]



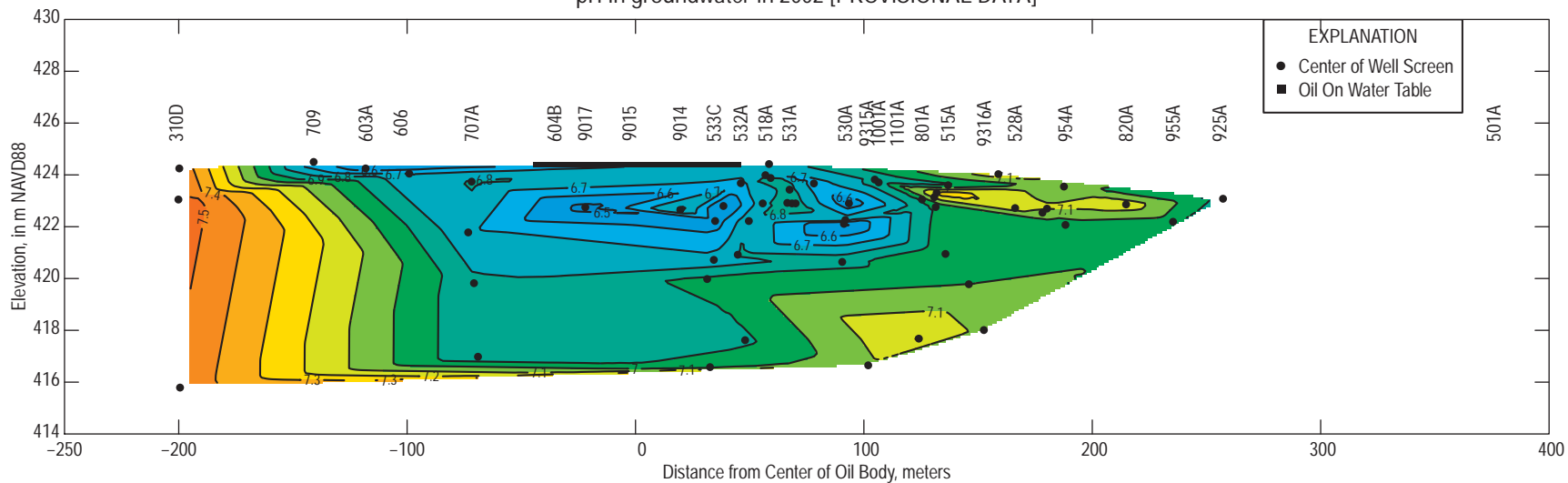
pH in groundwater in 2000 [PROVISIONAL DATA]



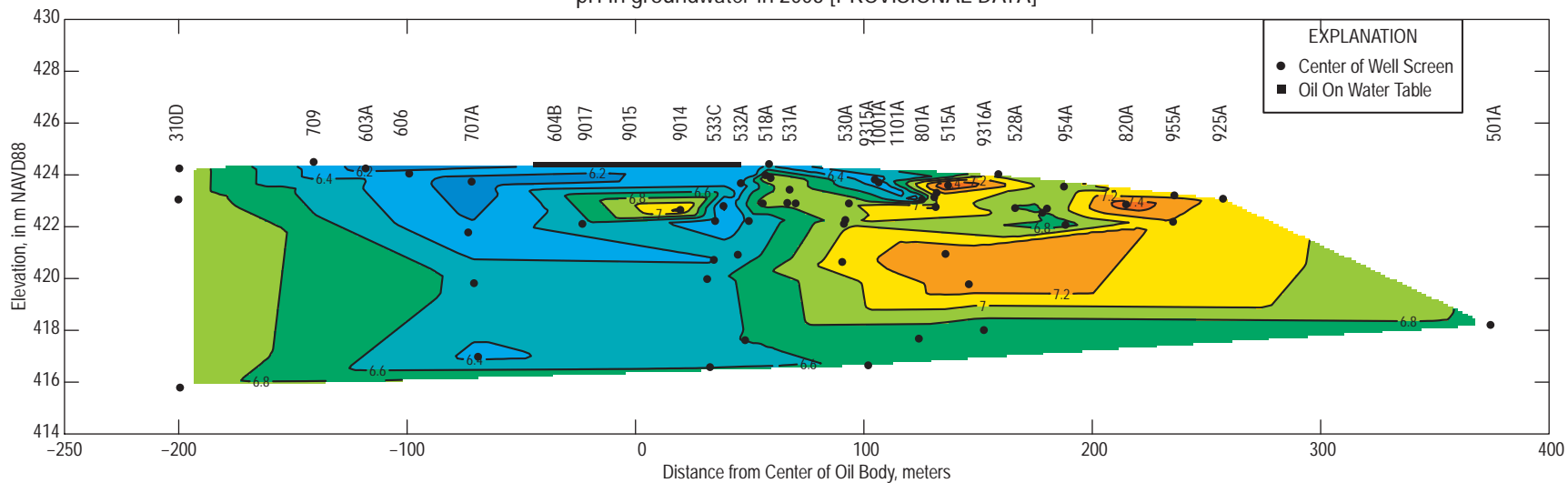
pH in groundwater in 2001 [PROVISIONAL DATA]



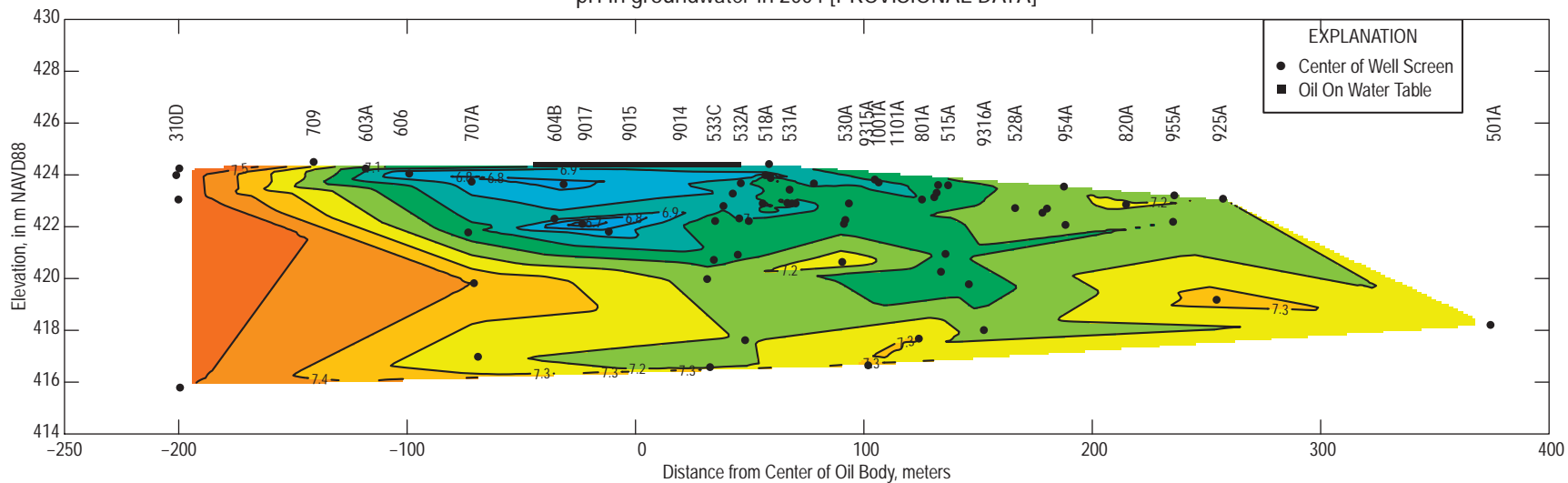
pH in groundwater in 2002 [PROVISIONAL DATA]



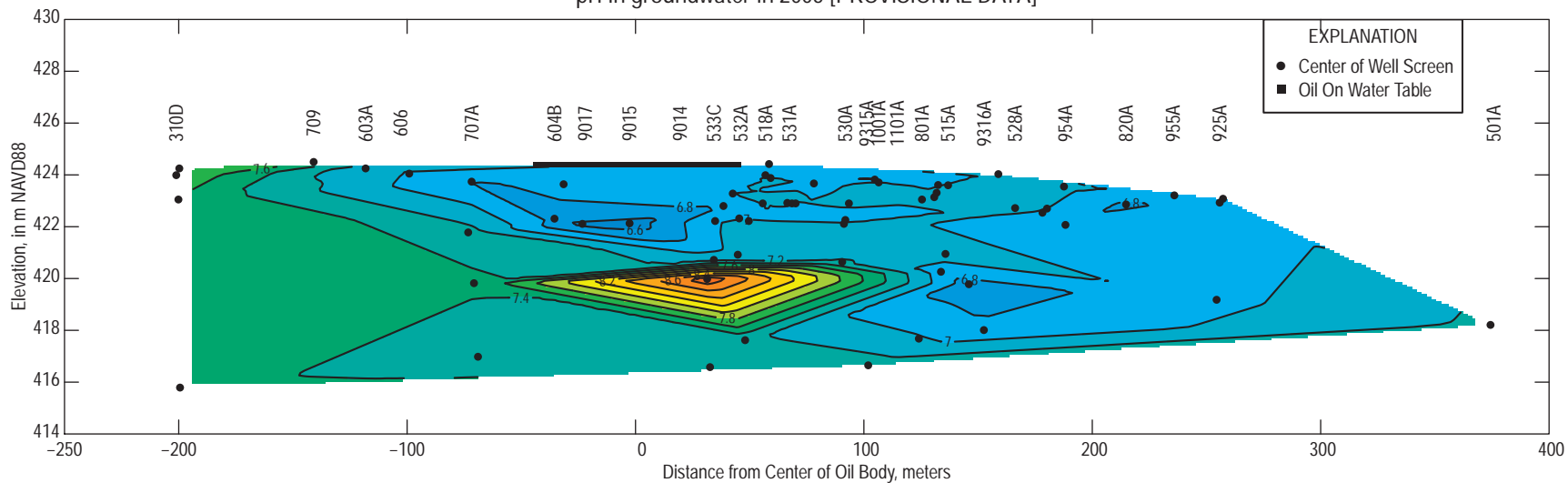
pH in groundwater in 2003 [PROVISIONAL DATA]



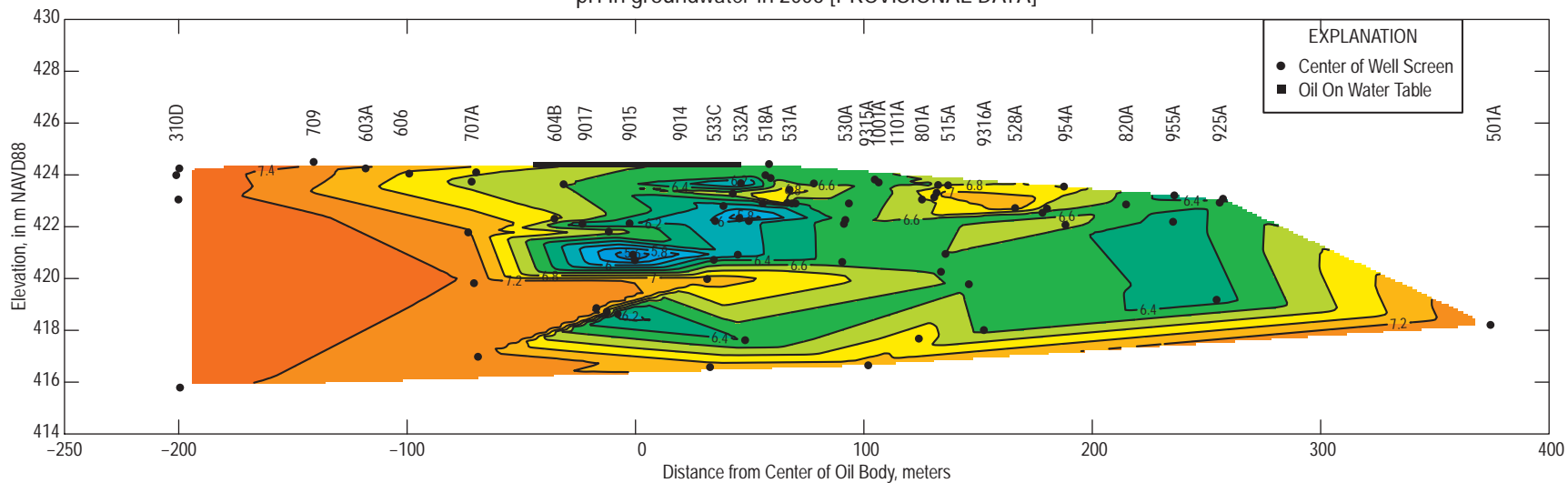
pH in groundwater in 2004 [PROVISIONAL DATA]



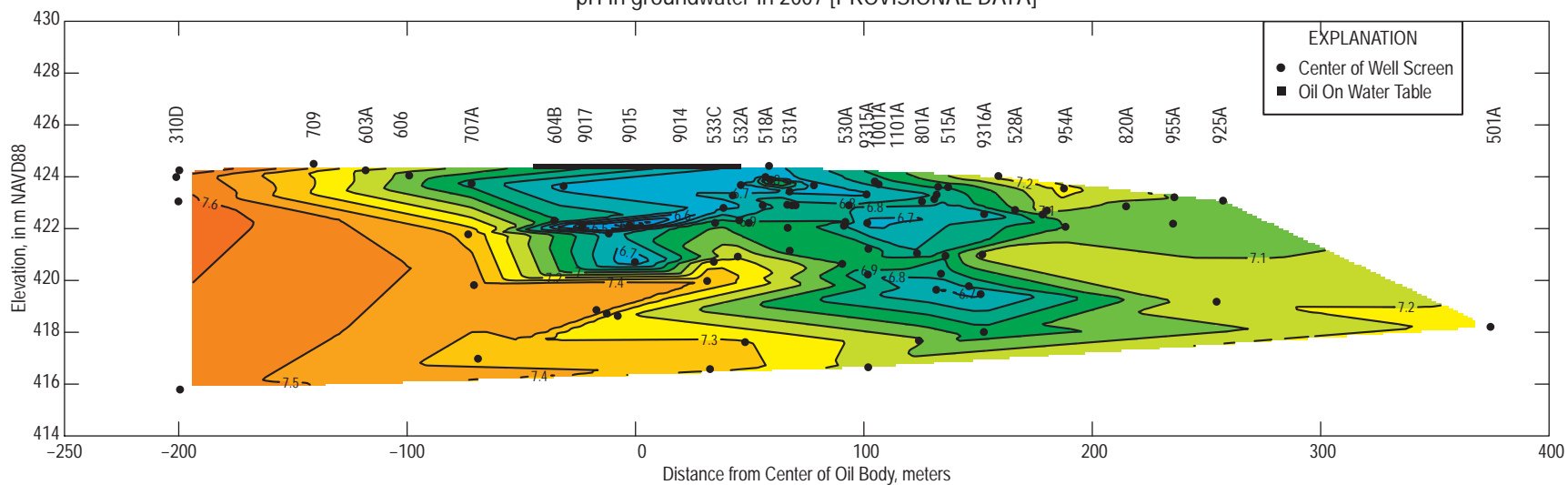
pH in groundwater in 2005 [PROVISIONAL DATA]



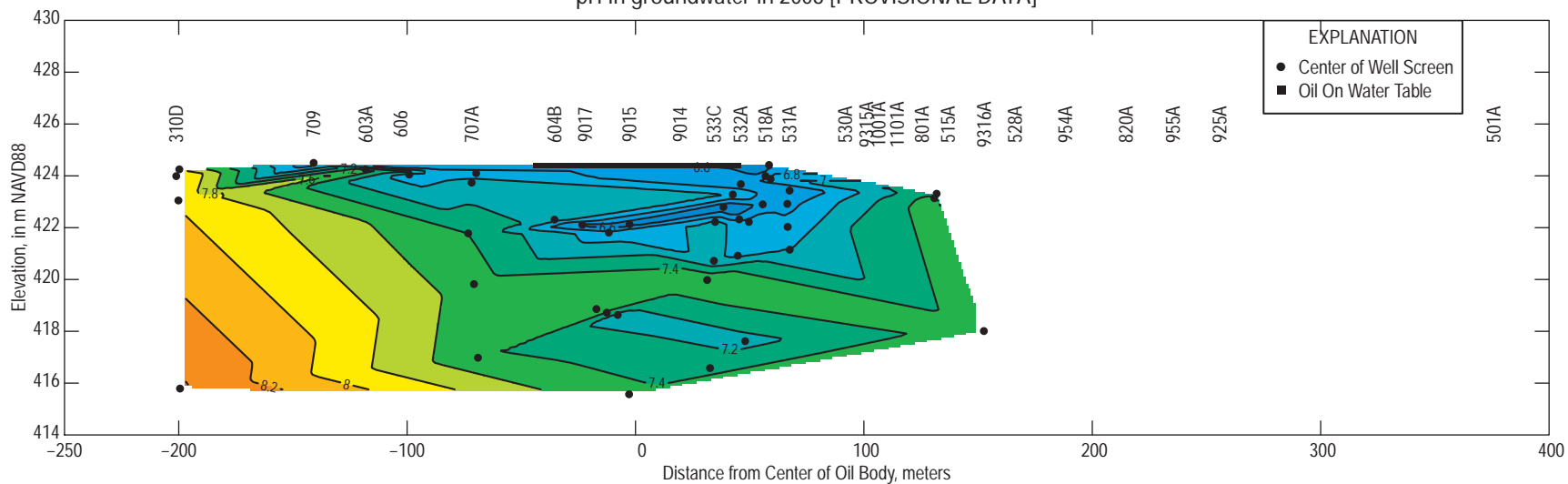
pH in groundwater in 2006 [PROVISIONAL DATA]



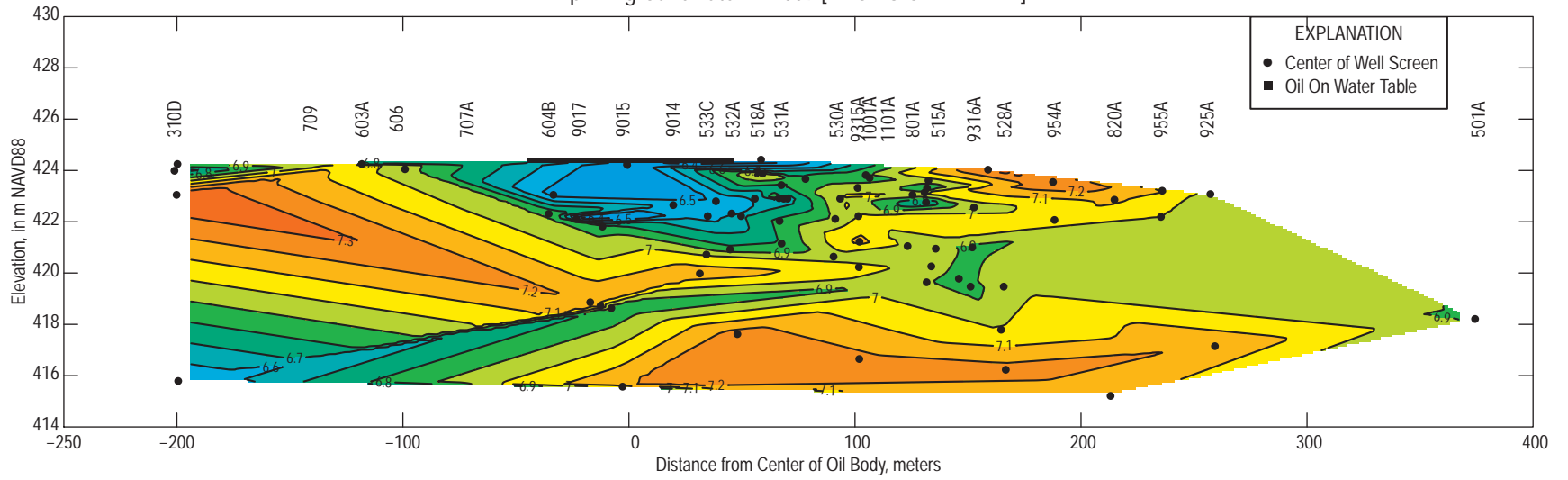
pH in groundwater in 2007 [PROVISIONAL DATA]



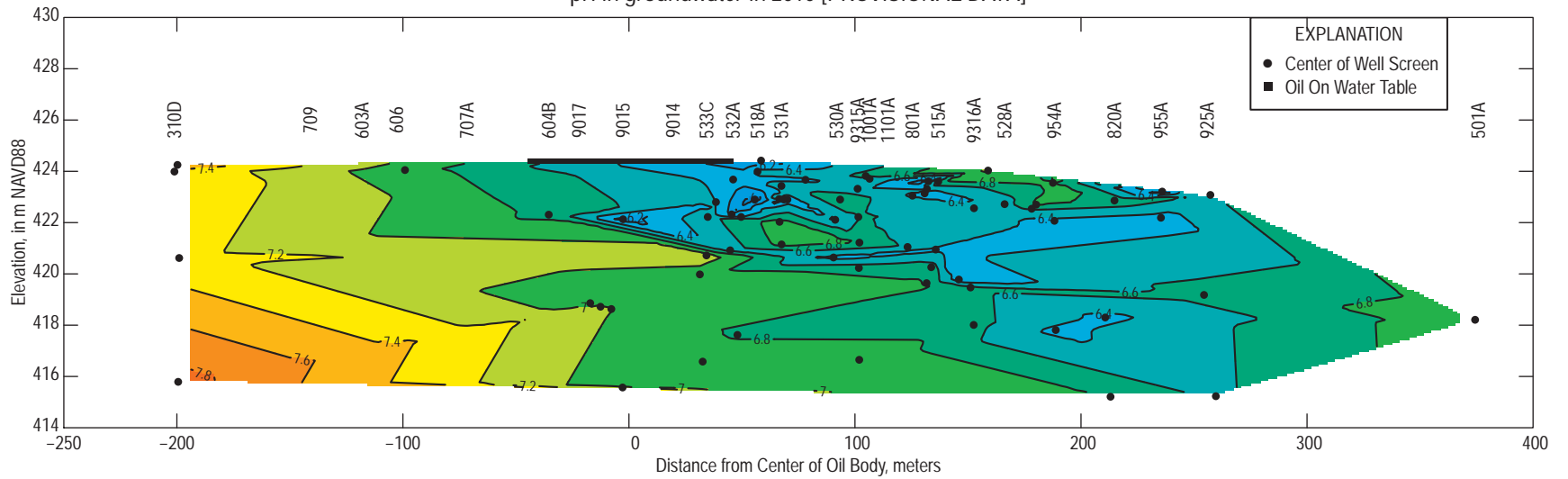
pH in groundwater in 2008 [PROVISIONAL DATA]



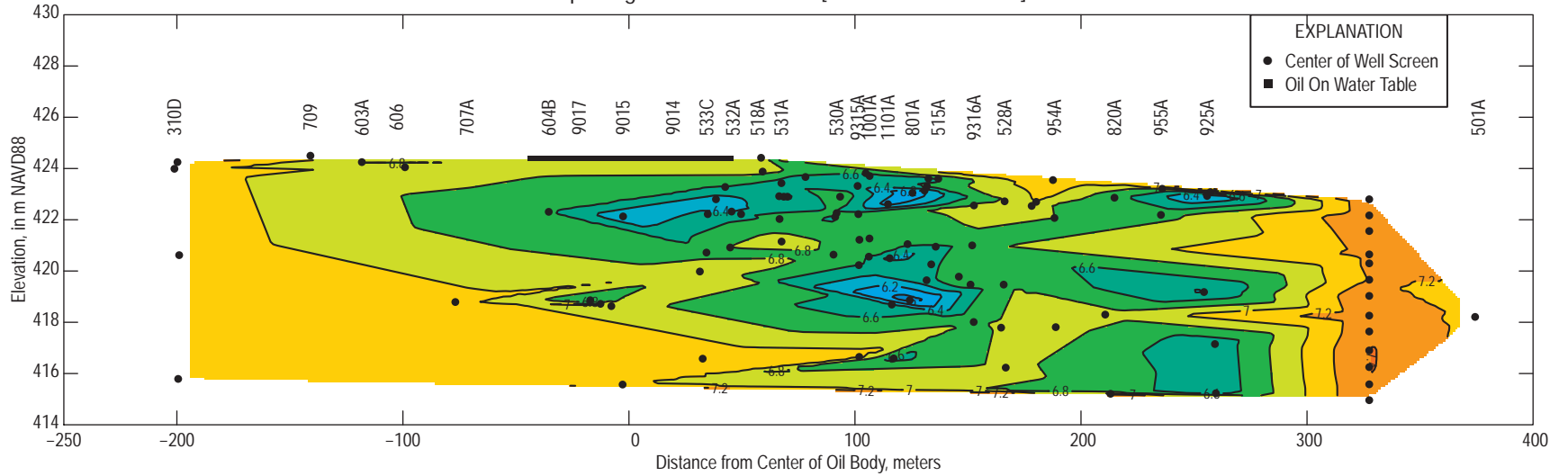
pH in groundwater in 2009 [PROVISIONAL DATA]



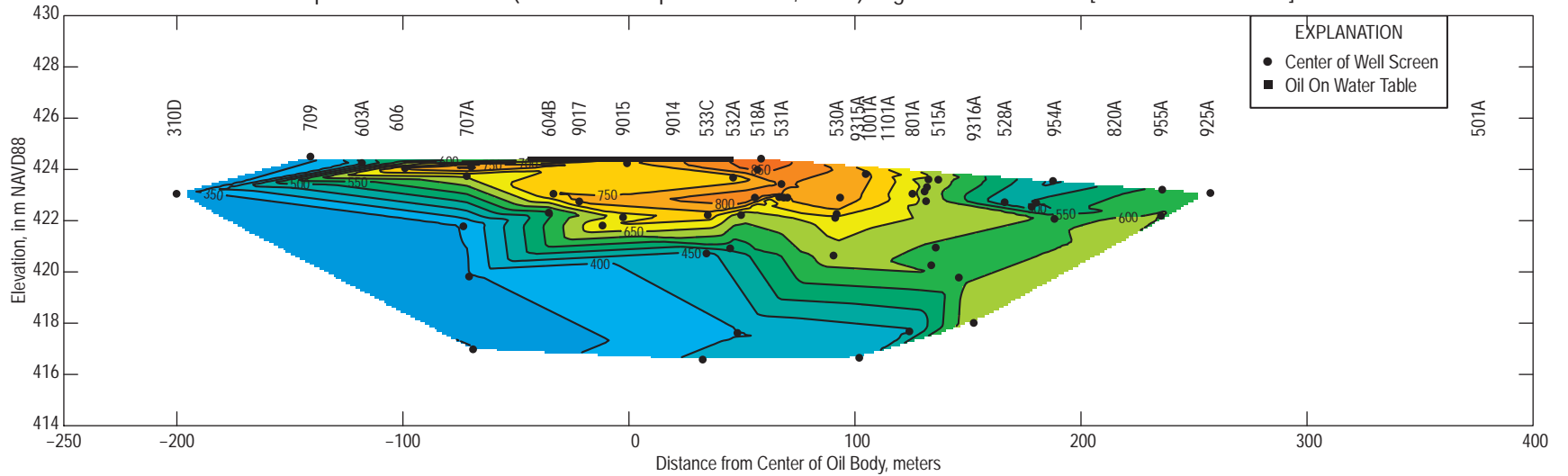
pH in groundwater in 2010 [PROVISIONAL DATA]



pH in groundwater in 2012 [PROVISIONAL DATA]

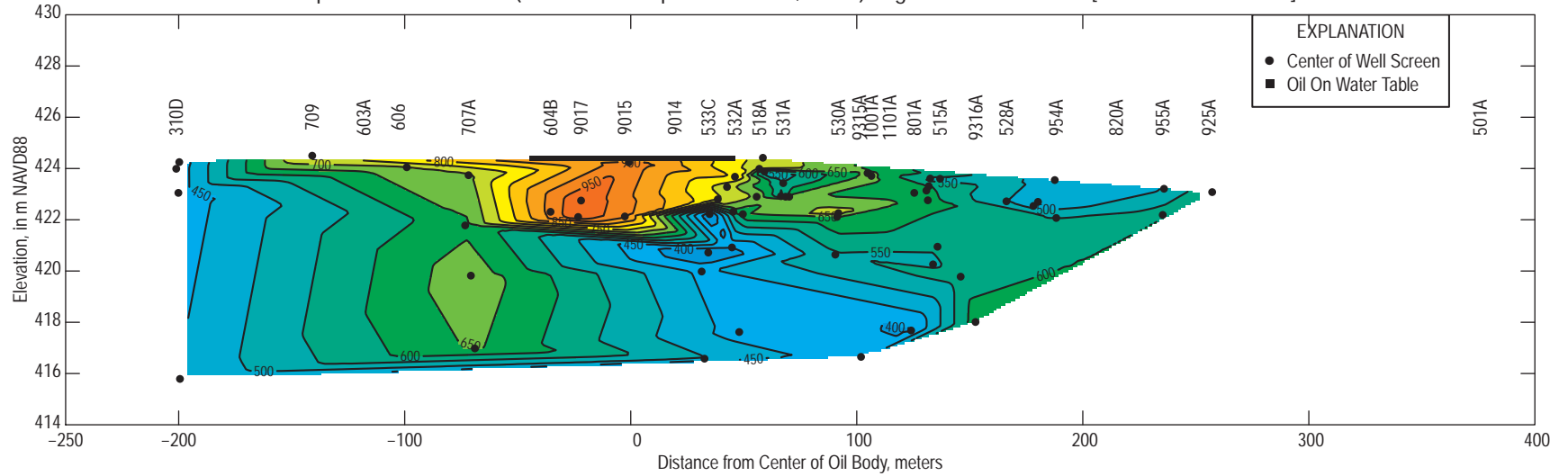


Specific Conductance (microSiemens per centimeter, uS/cm) in groundwater in 1998 [PROVISIONAL DATA]

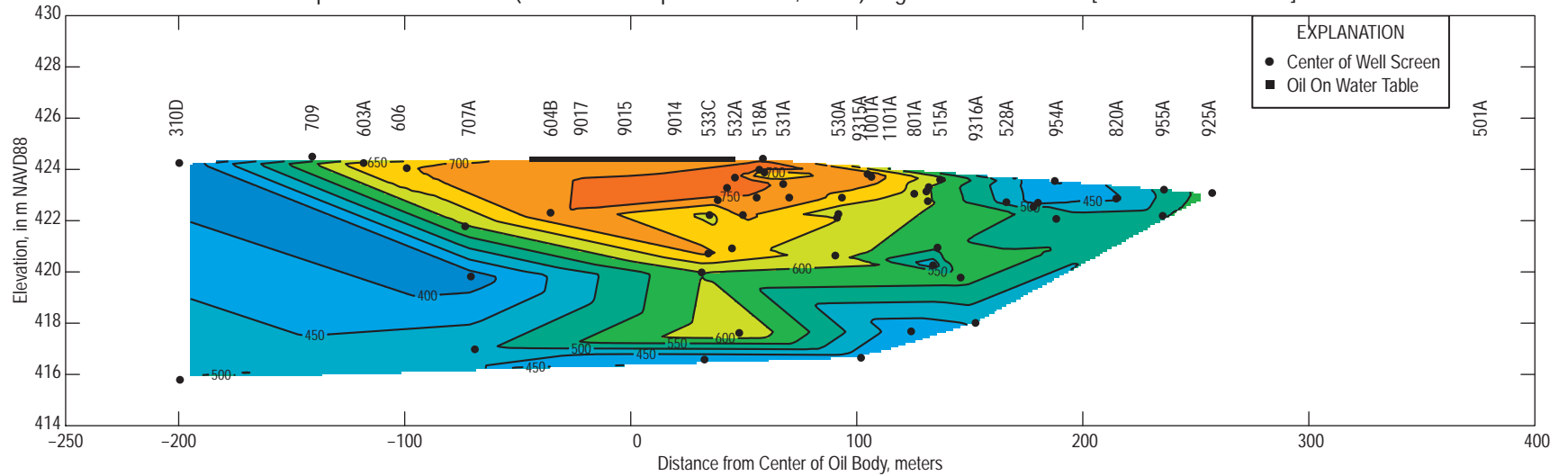




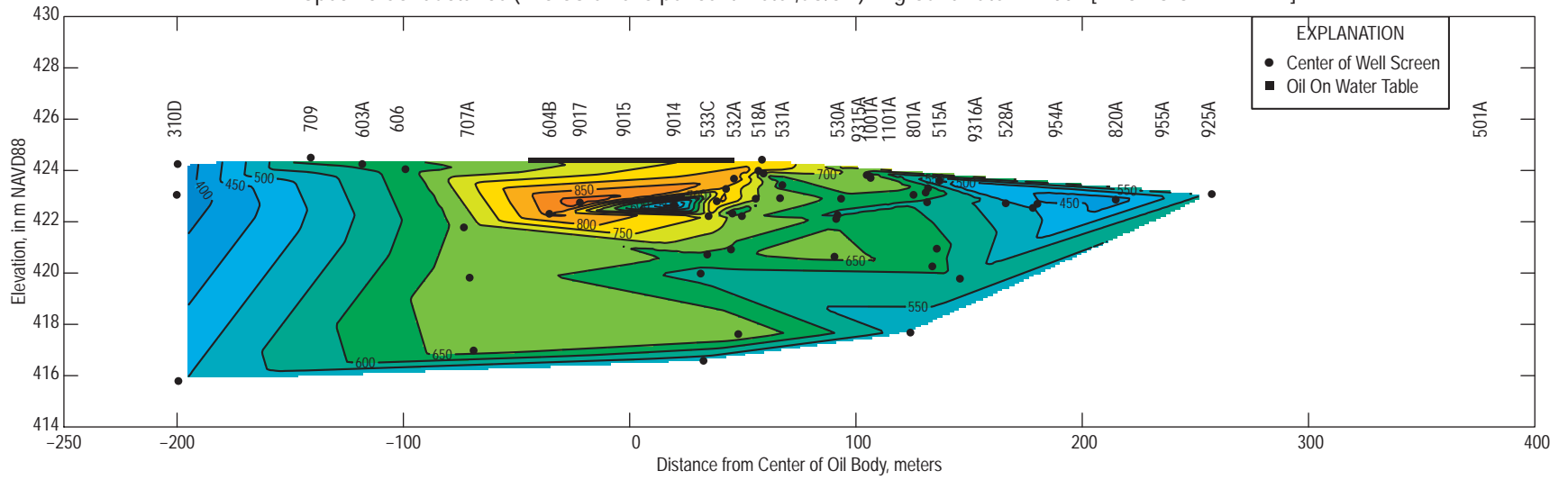
Specific Conductance (microSiemens per centimeter,uS/cm) in groundwater in 1999 [PROVISIONAL DATA]



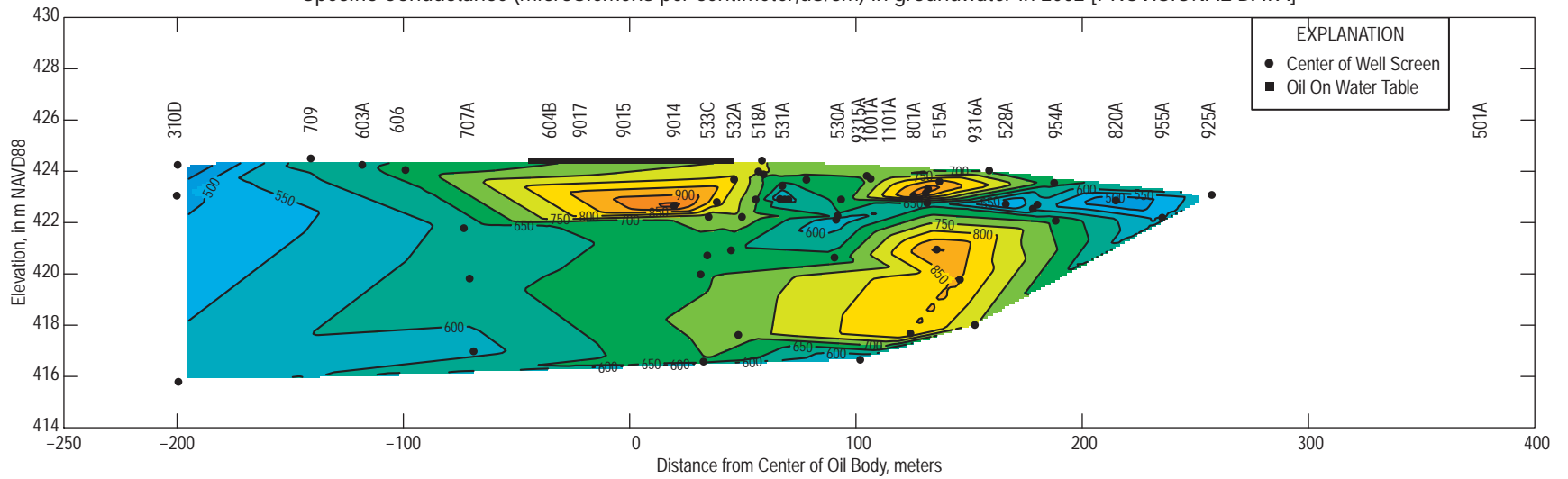
Specific Conductance (microSiemens per centimeter,uS/cm) in groundwater in 2000 [PROVISIONAL DATA]



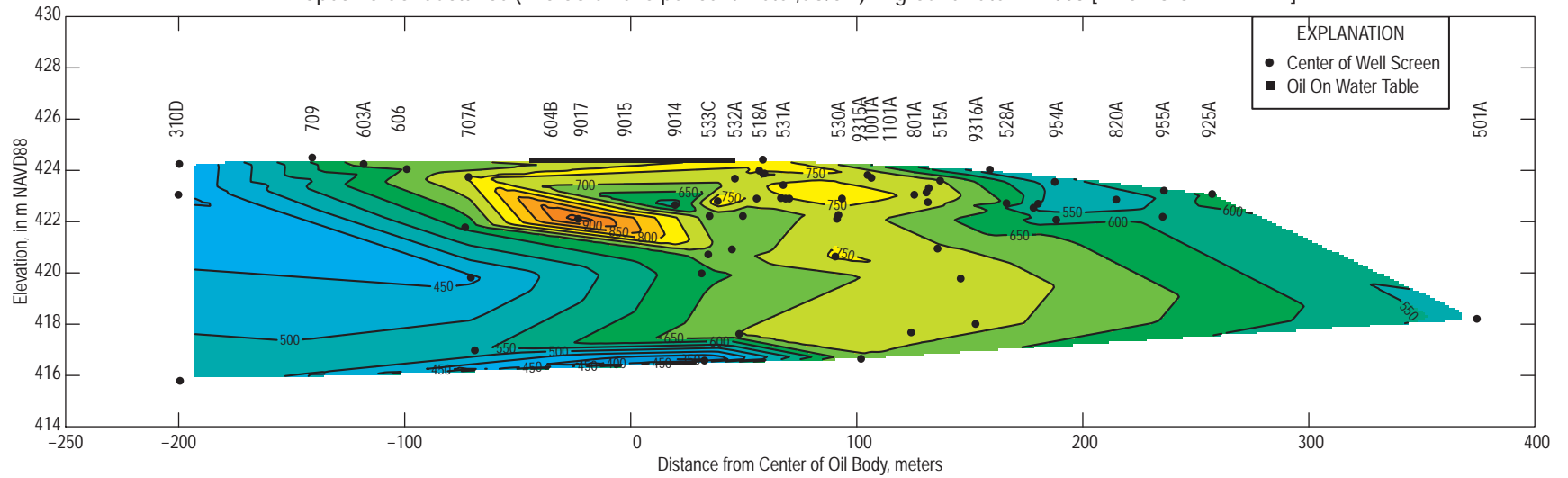
Specific Conductance (microSiemens per centimeter,uS/cm) in groundwater in 2001 [PROVISIONAL DATA]



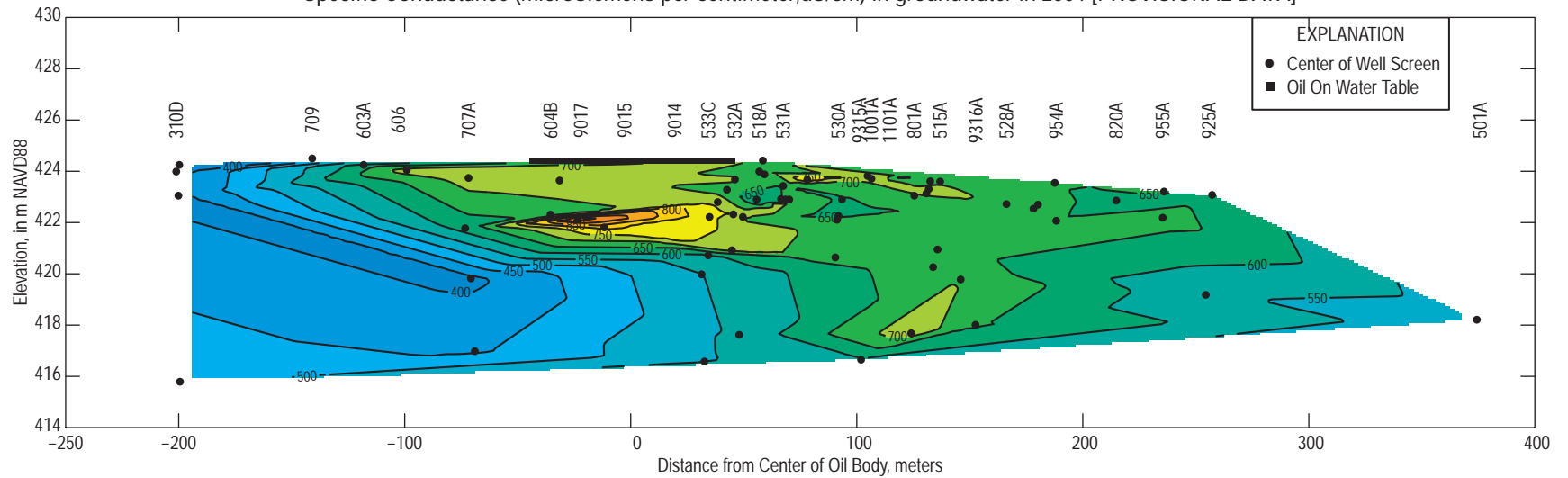
Specific Conductance (microSiemens per centimeter,uS/cm) in groundwater in 2002 [PROVISIONAL DATA]



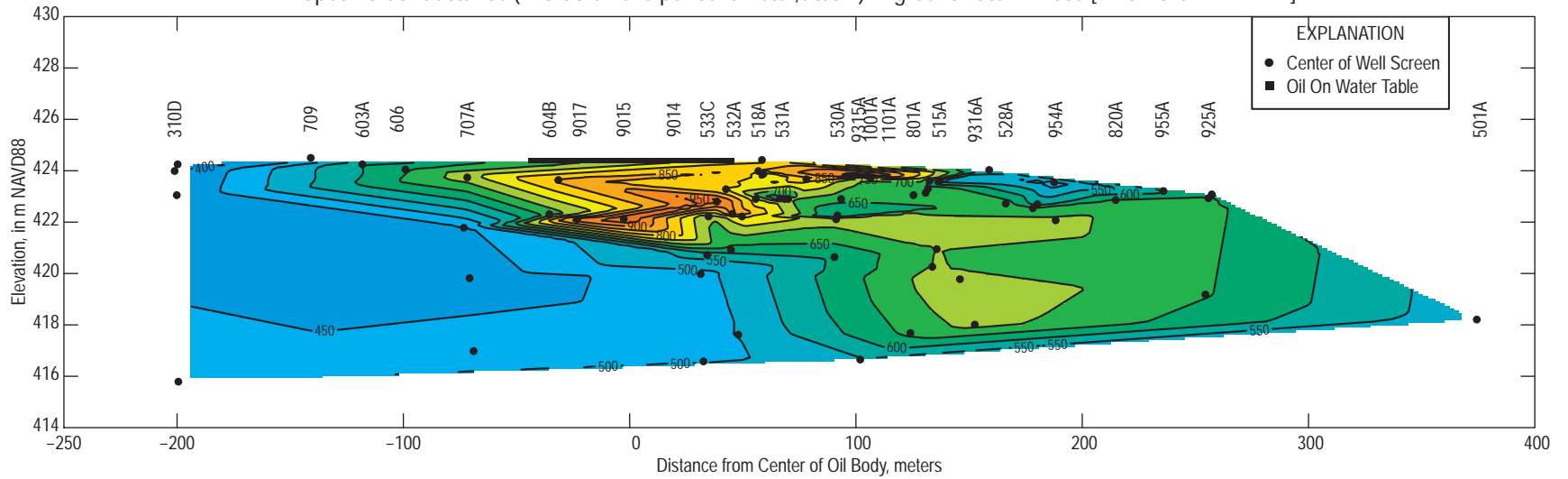
Specific Conductance (microSiemens per centimeter,uS/cm) in groundwater in 2003 [PROVISIONAL DATA]



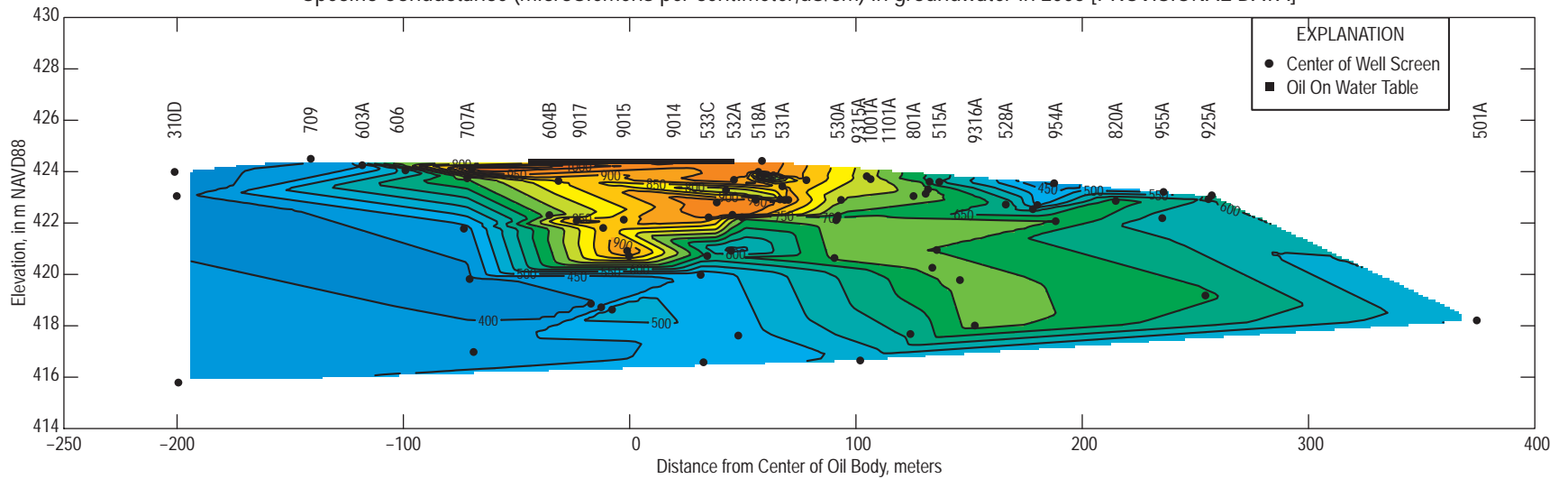
Specific Conductance (microSiemens per centimeter,uS/cm) in groundwater in 2004 [PROVISIONAL DATA]



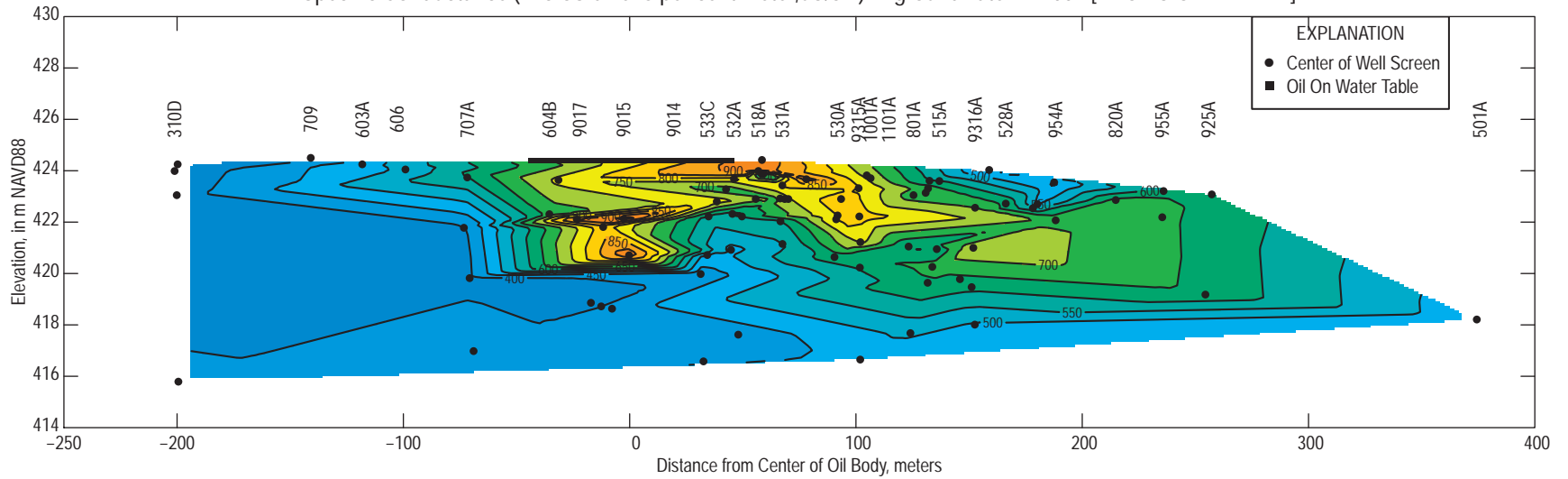
Specific Conductance (microSiemens per centimeter,uS/cm) in groundwater in 2005 [PROVISIONAL DATA]



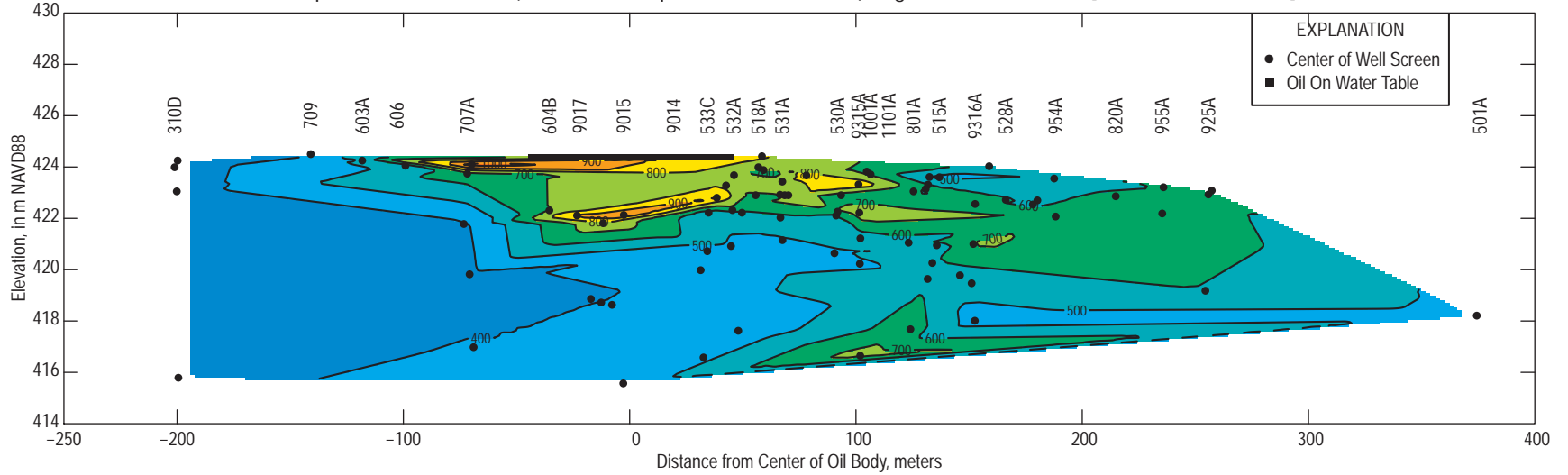
Specific Conductance (microSiemens per centimeter,uS/cm) in groundwater in 2006 [PROVISIONAL DATA]



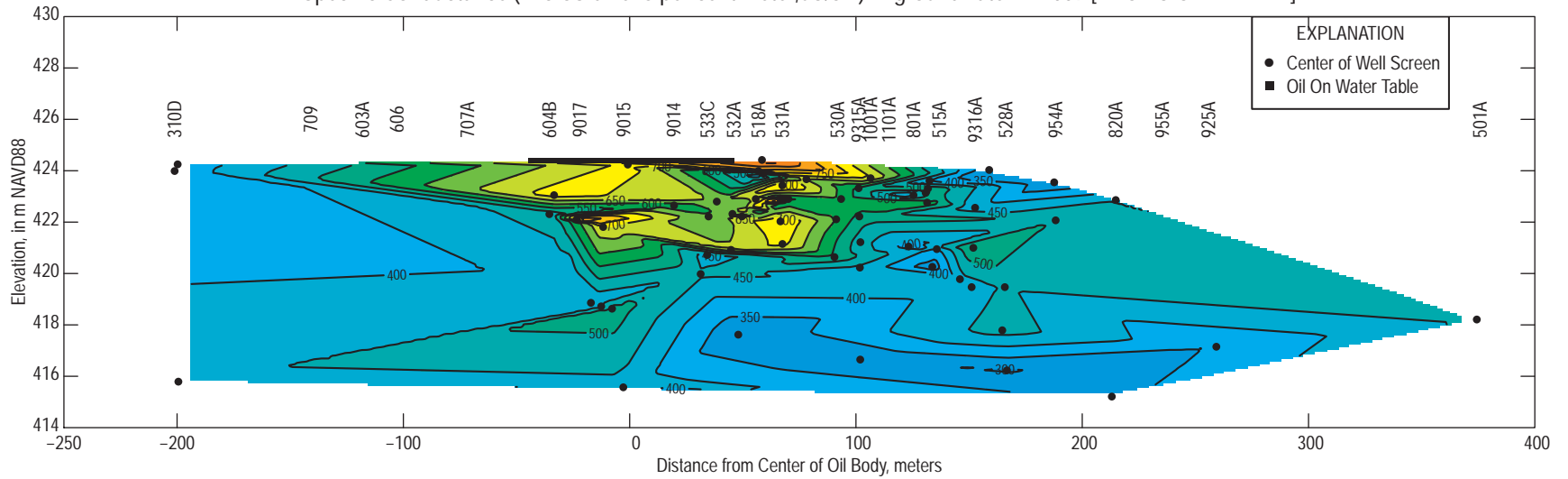
Specific Conductance (microSiemens per centimeter,uS/cm) in groundwater in 2007 [PROVISIONAL DATA]



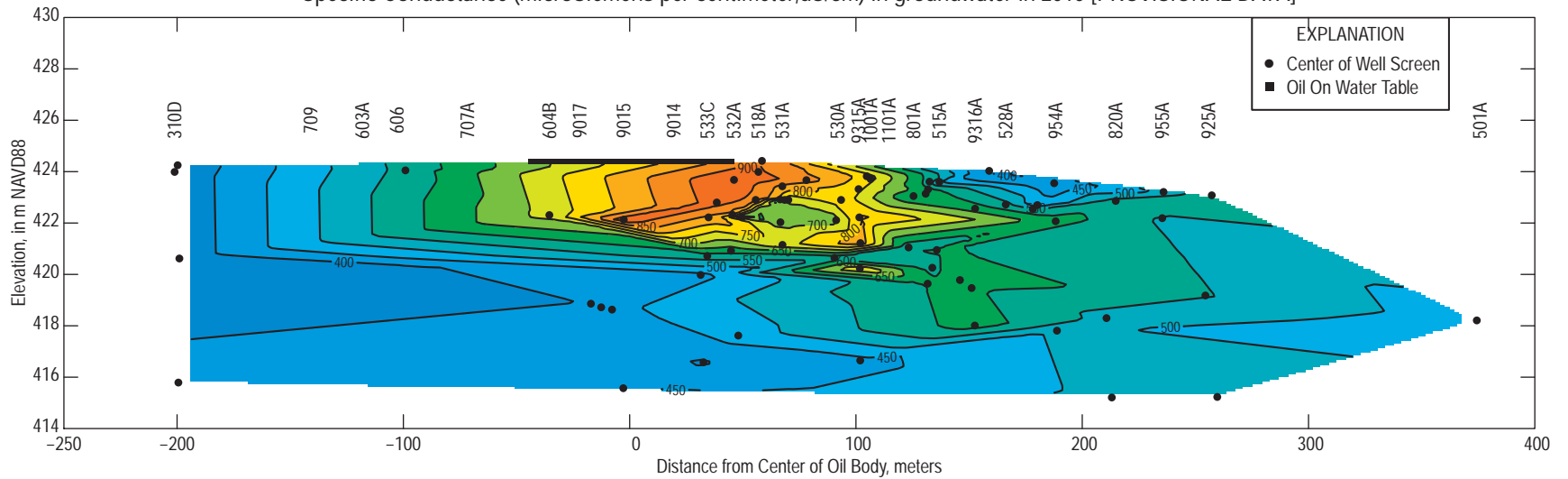
Specific Conductance (microSiemens per centimeter,uS/cm) in groundwater in 2008 [PROVISIONAL DATA]



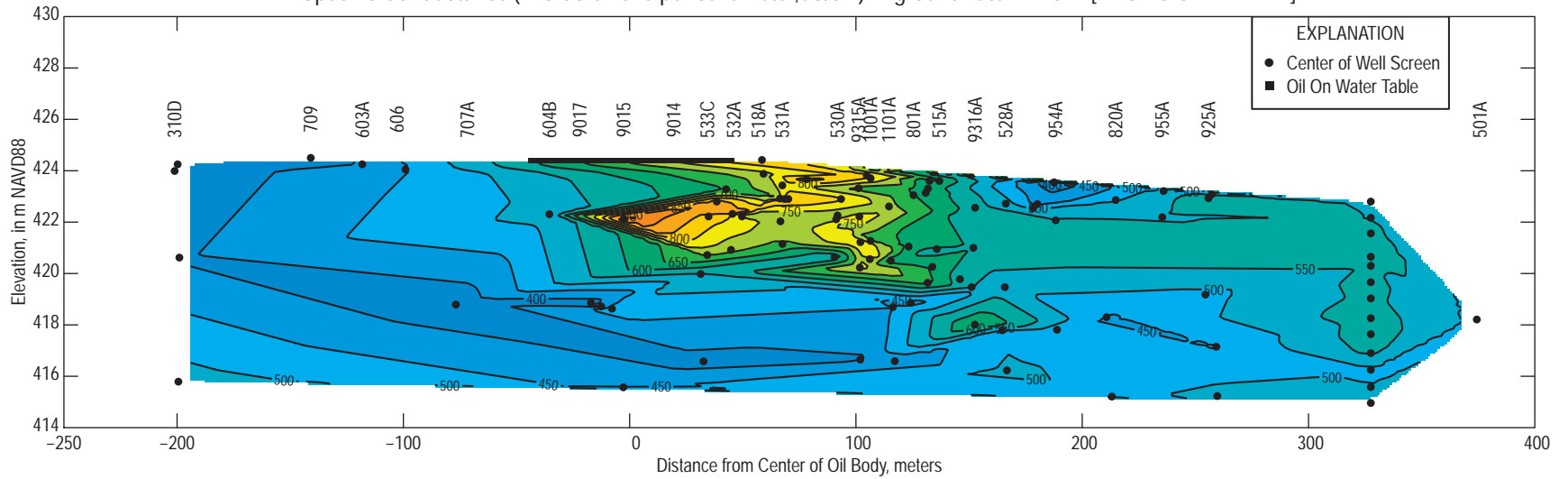
Specific Conductance (microSiemens per centimeter,uS/cm) in groundwater in 2009 [PROVISIONAL DATA]



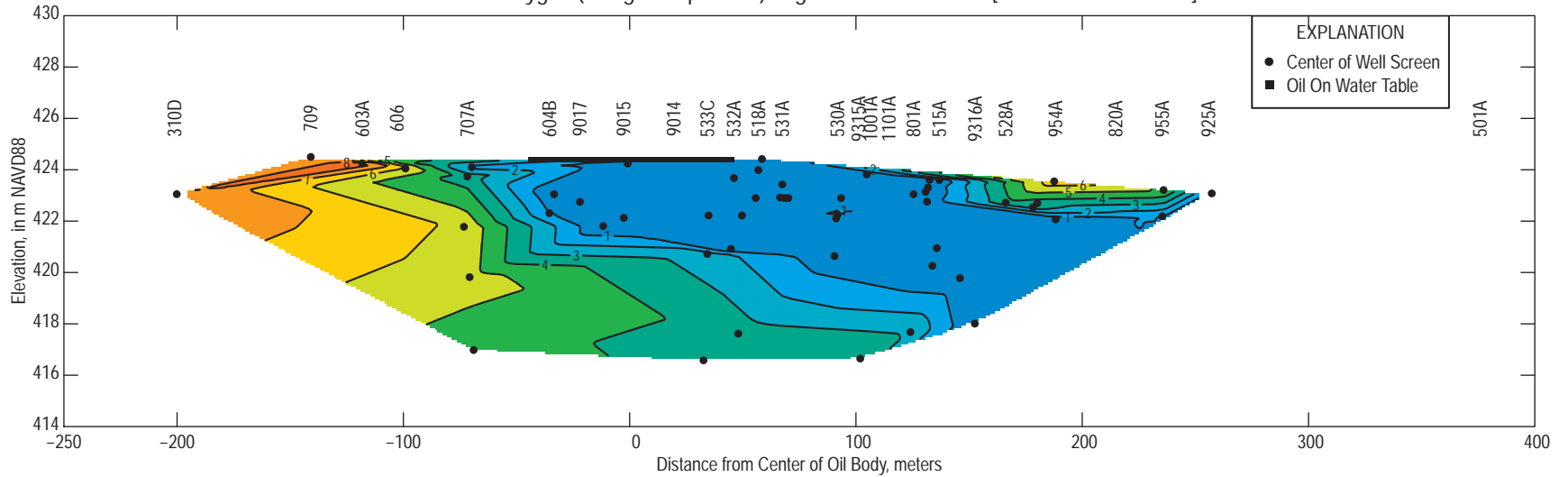
Specific Conductance (microSiemens per centimeter,uS/cm) in groundwater in 2010 [PROVISIONAL DATA]



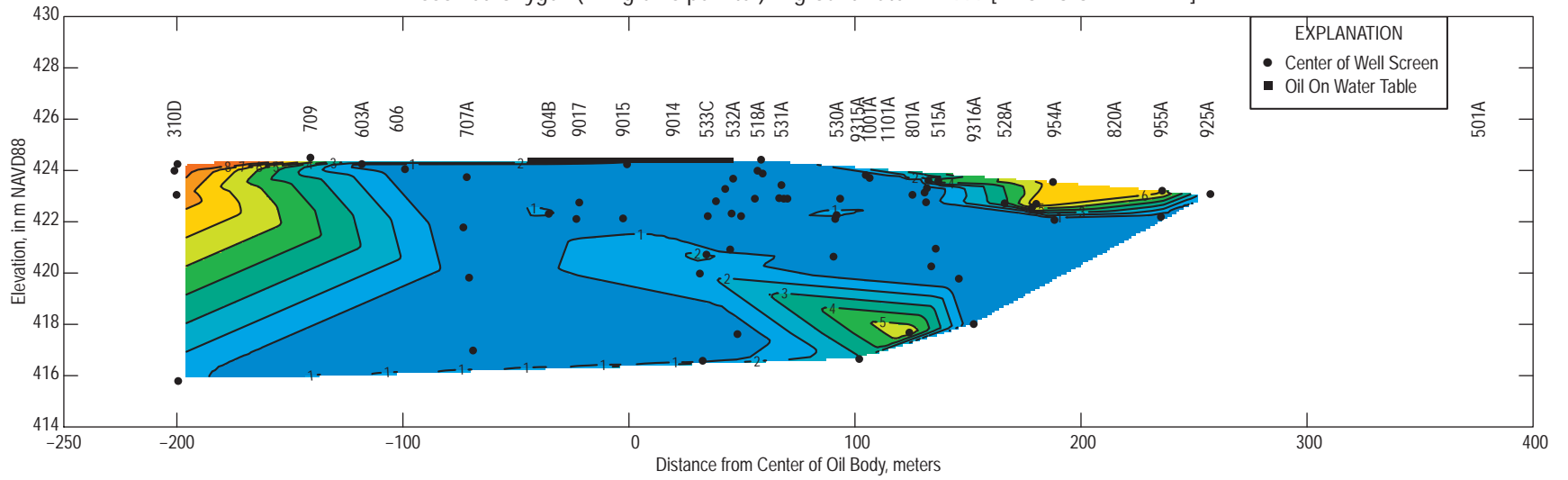
Specific Conductance (microSiemens per centimeter,uS/cm) in groundwater in 2012 [PROVISIONAL DATA]



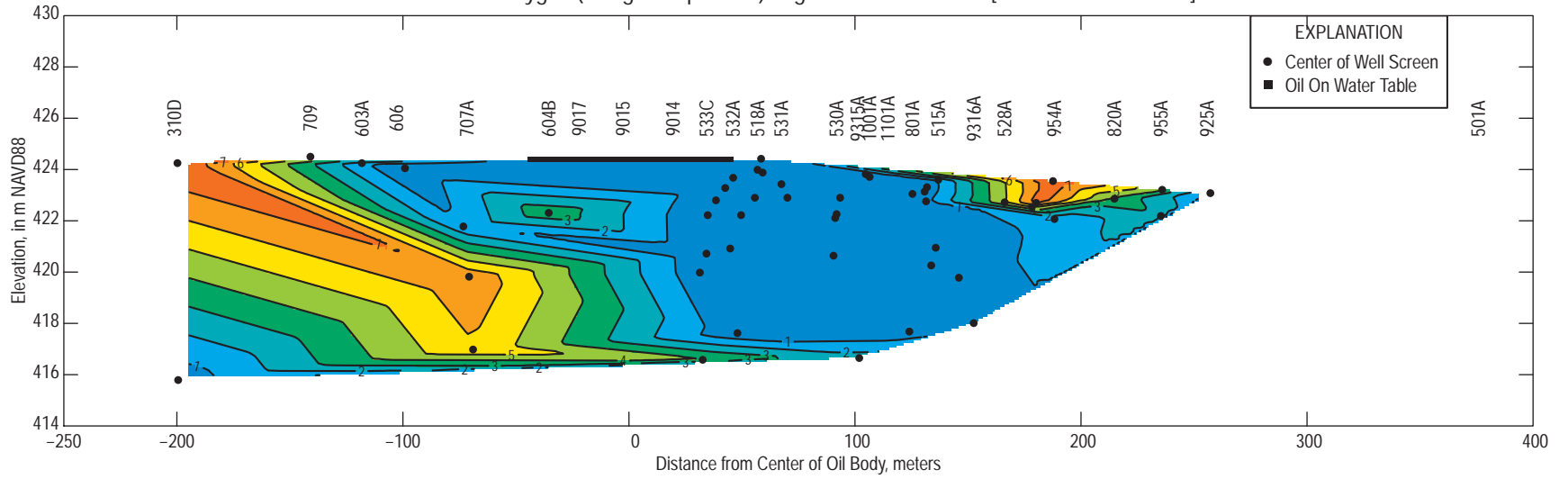
Dissolved Oxygen (milligrams per liter) in groundwater in 1998 [PROVISIONAL DATA]



Dissolved Oxygen (milligrams per liter) in groundwater in 1999 [PROVISIONAL DATA]

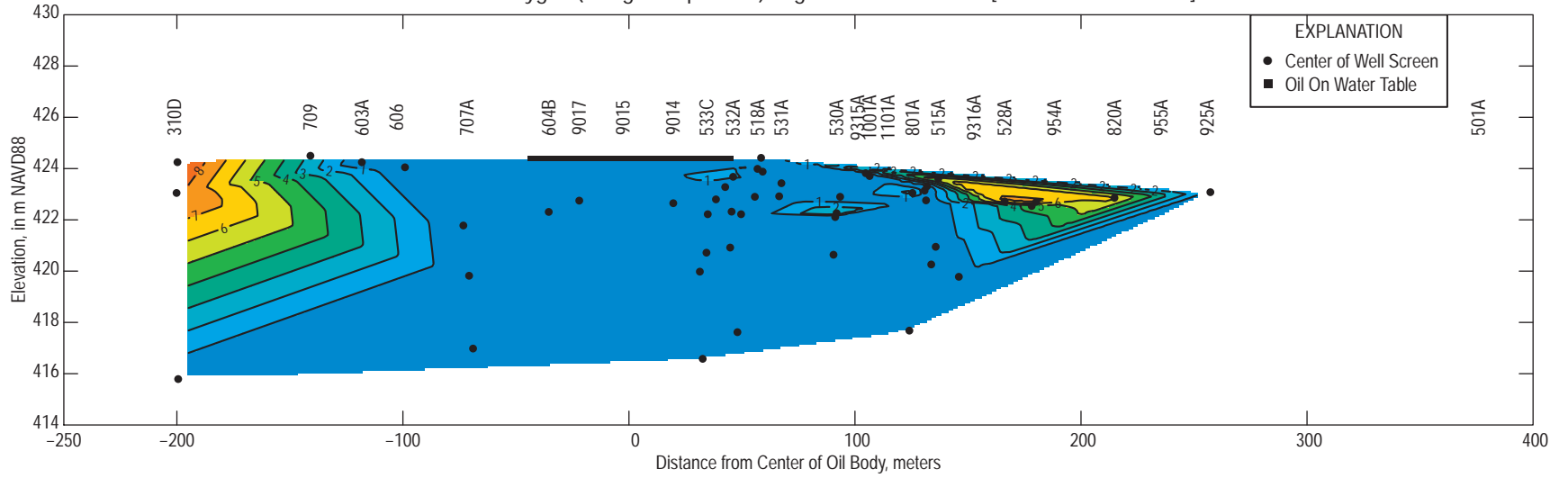


Dissolved Oxygen (milligrams per liter) in groundwater in 2000 [PROVISIONAL DATA]

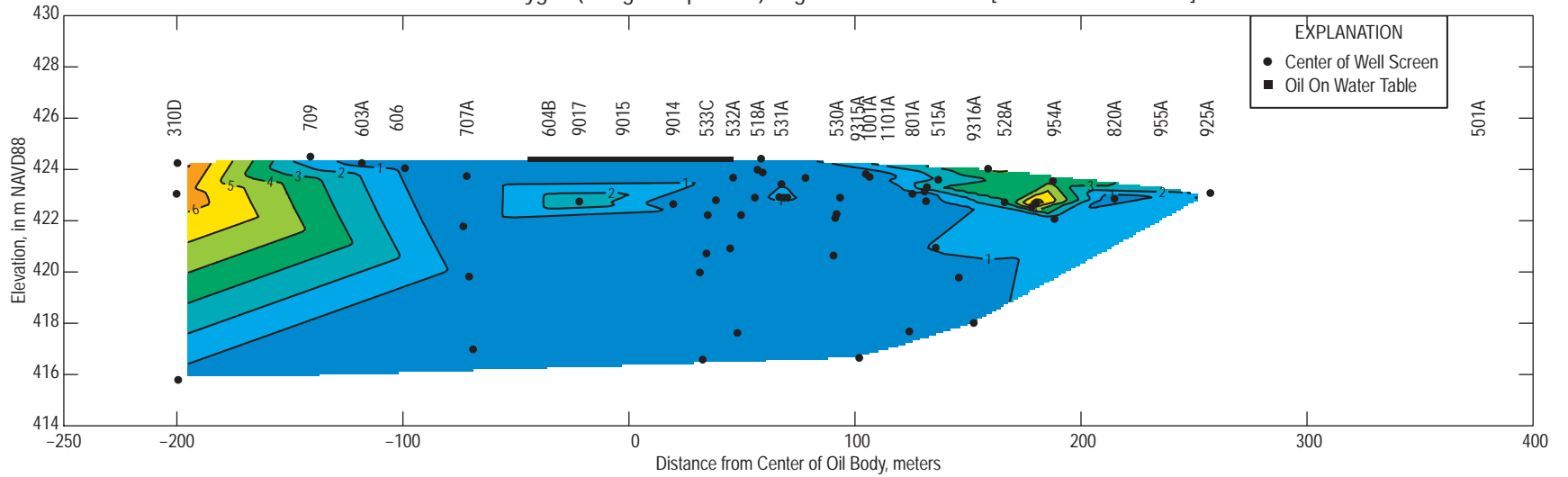




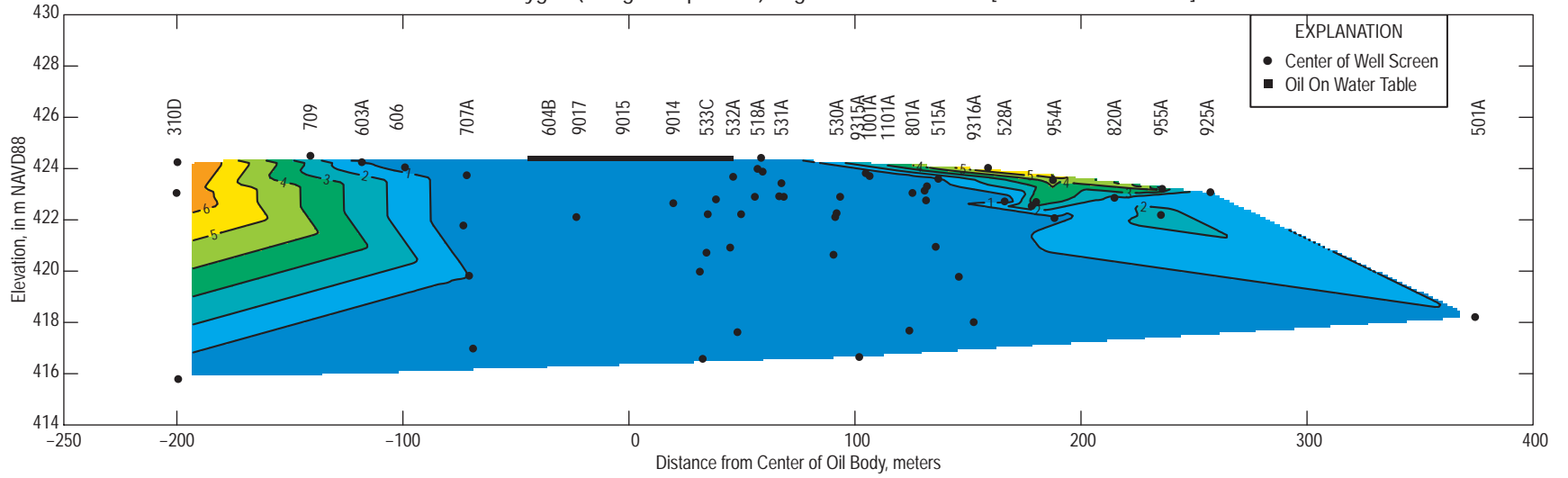
Dissolved Oxygen (milligrams per liter) in groundwater in 2001 [PROVISIONAL DATA]



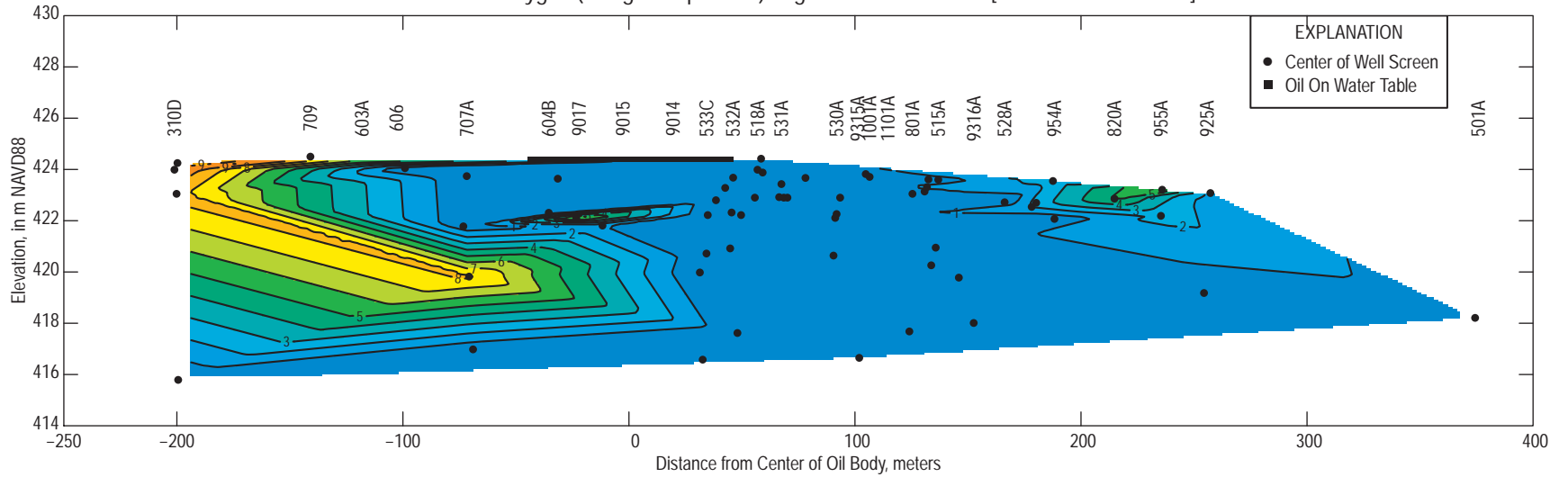
Dissolved Oxygen (milligrams per liter) in groundwater in 2002 [PROVISIONAL DATA]



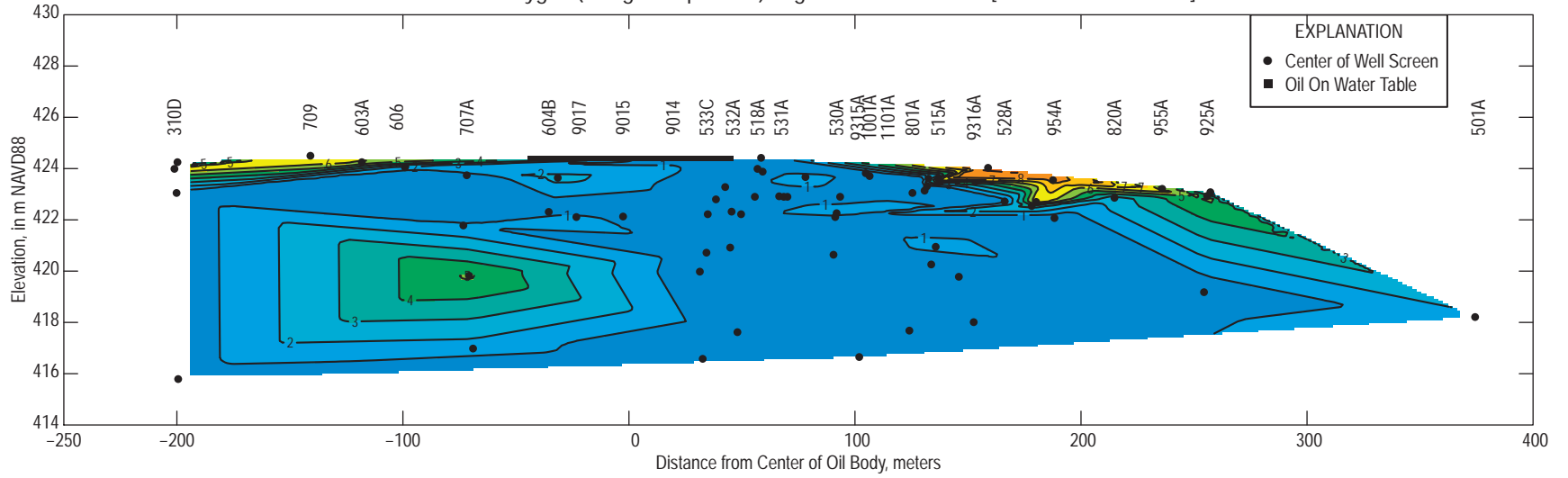
Dissolved Oxygen (milligrams per liter) in groundwater in 2003 [PROVISIONAL DATA]



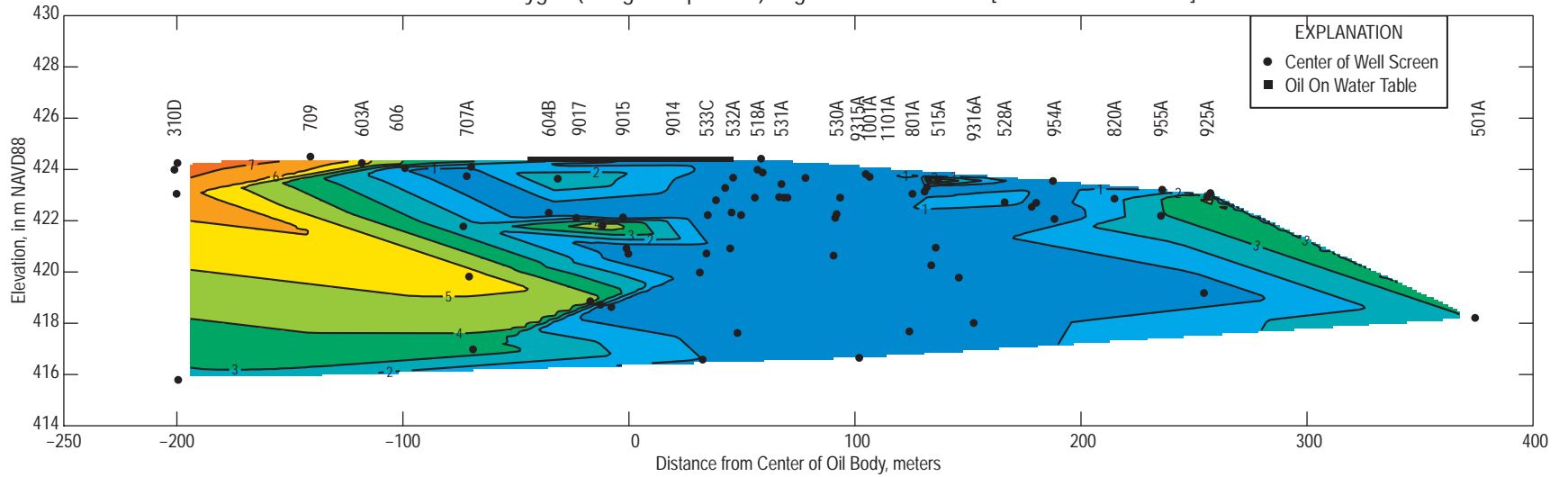
Dissolved Oxygen (milligrams per liter) in groundwater in 2004 [PROVISIONAL DATA]



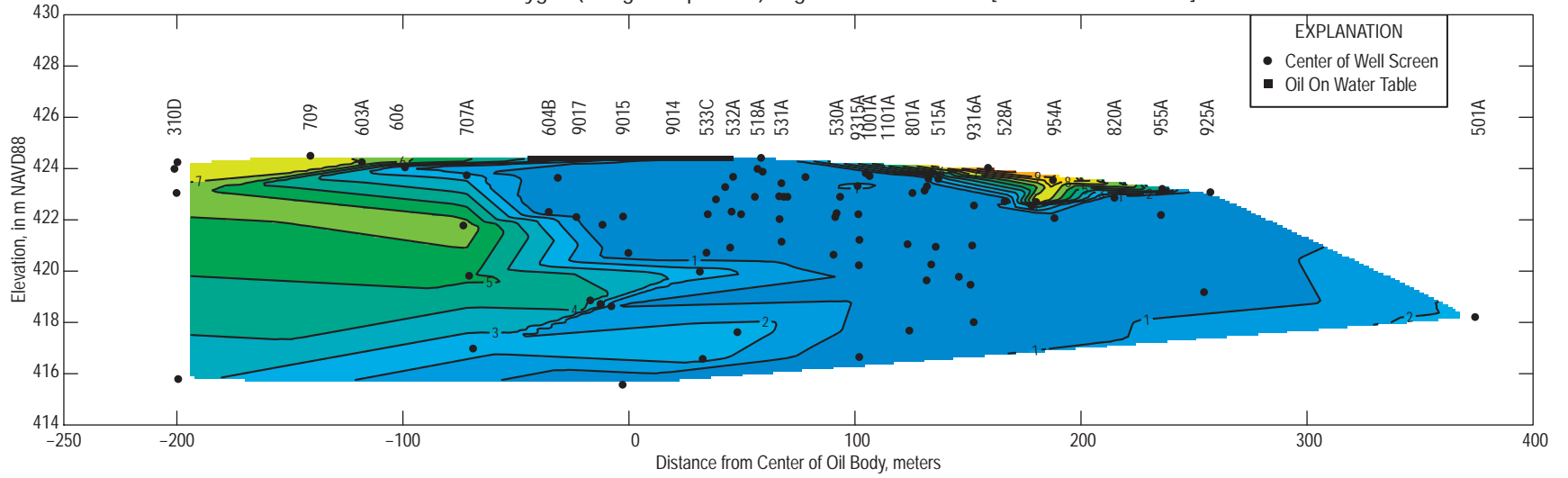
Dissolved Oxygen (milligrams per liter) in groundwater in 2005 [PROVISIONAL DATA]



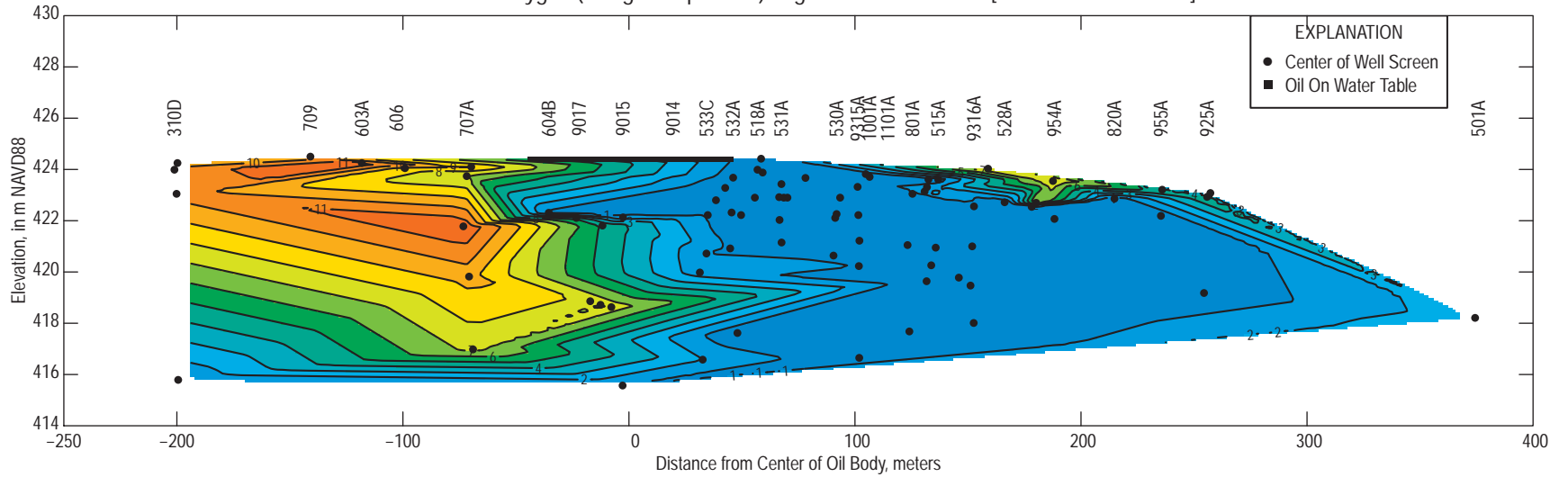
Dissolved Oxygen (milligrams per liter) in groundwater in 2006 [PROVISIONAL DATA]



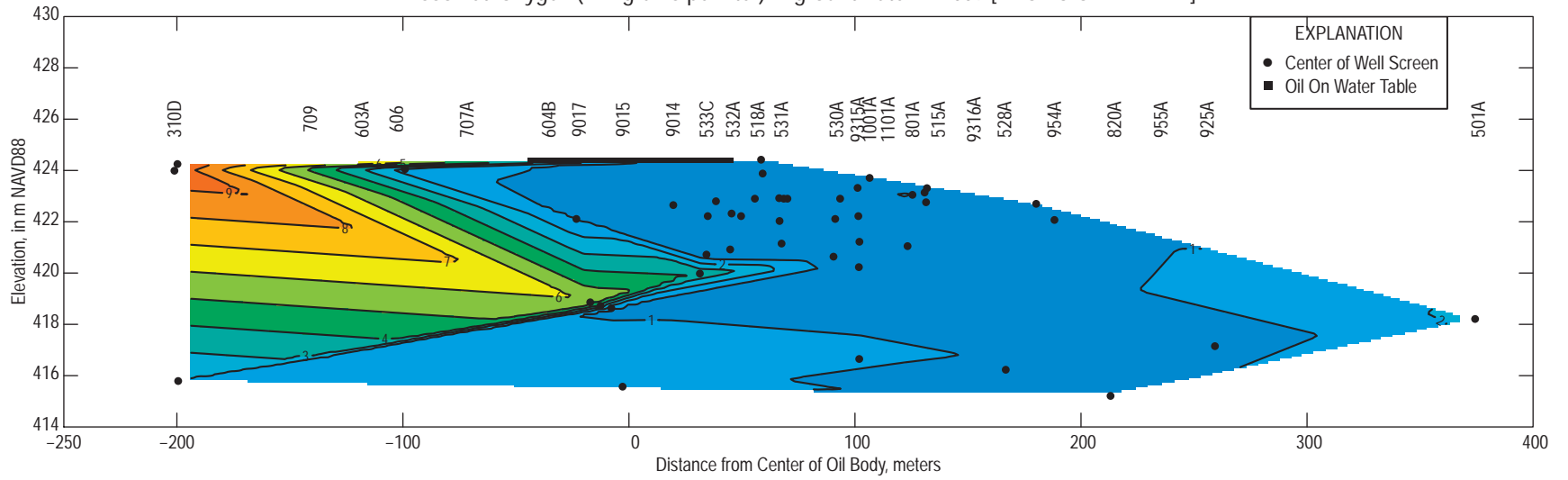
Dissolved Oxygen (milligrams per liter) in groundwater in 2007 [PROVISIONAL DATA]



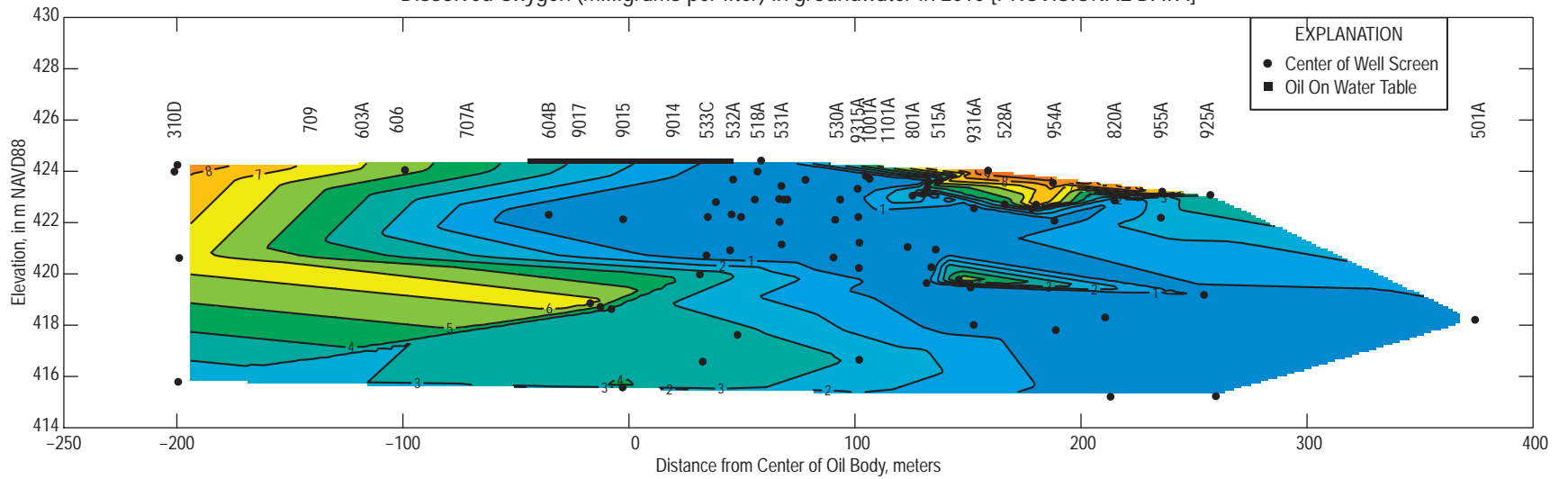
Dissolved Oxygen (milligrams per liter) in groundwater in 2008 [PROVISIONAL DATA]



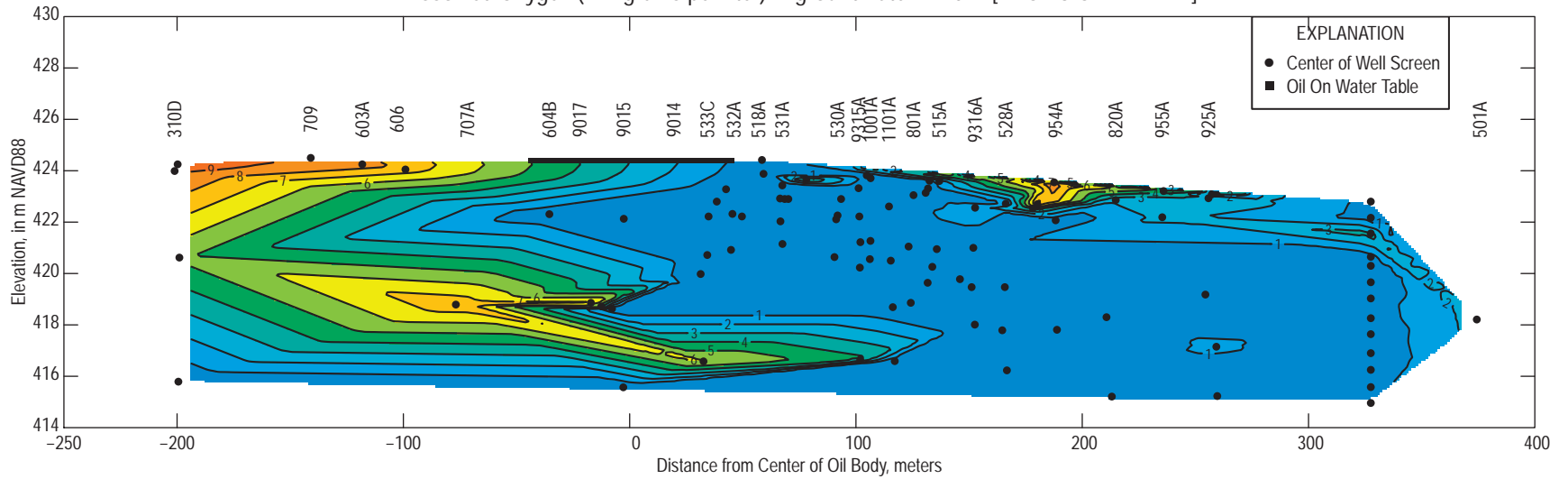
Dissolved Oxygen (milligrams per liter) in groundwater in 2009 [PROVISIONAL DATA]



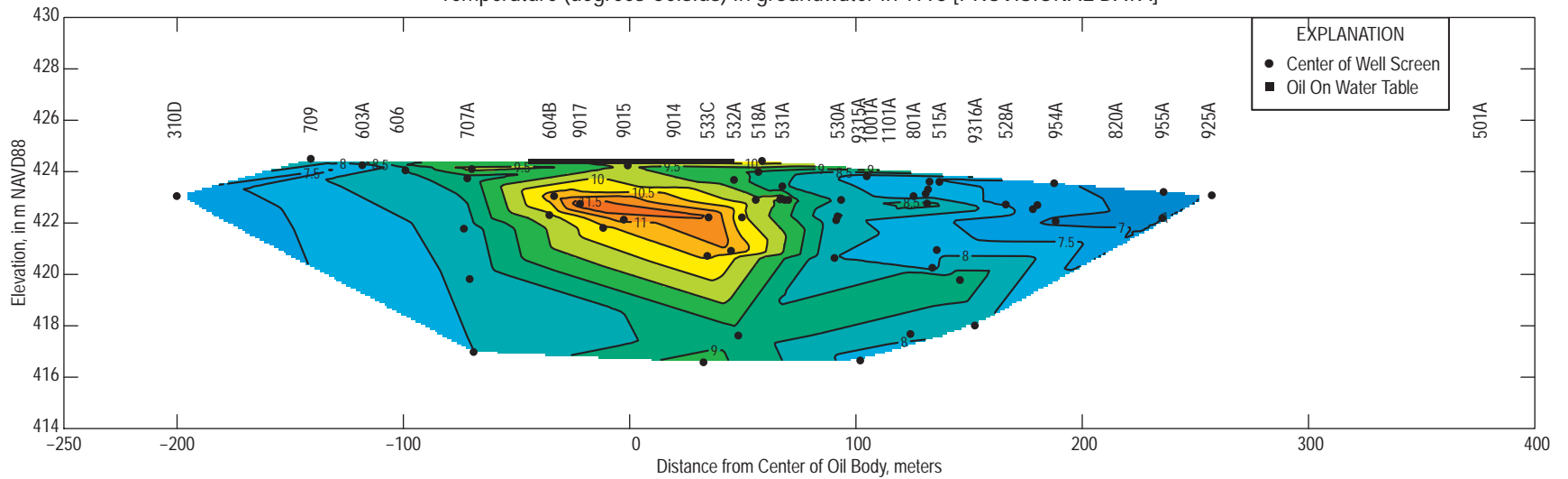
Dissolved Oxygen (milligrams per liter) in groundwater in 2010 [PROVISIONAL DATA]



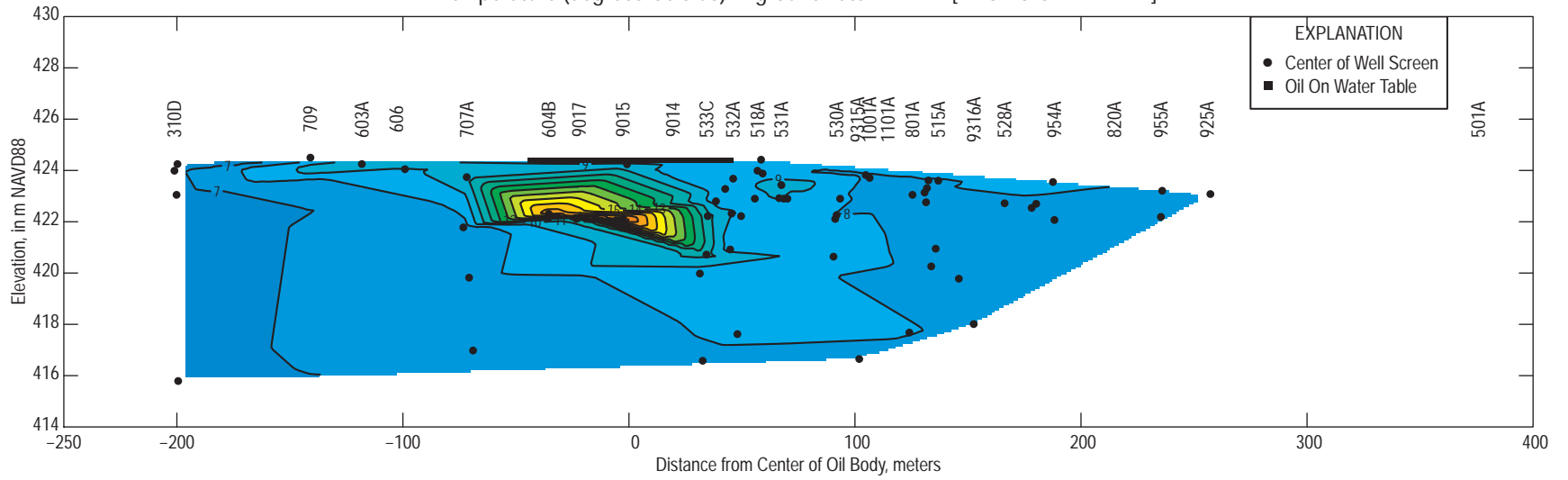
Dissolved Oxygen (milligrams per liter) in groundwater in 2012 [PROVISIONAL DATA]



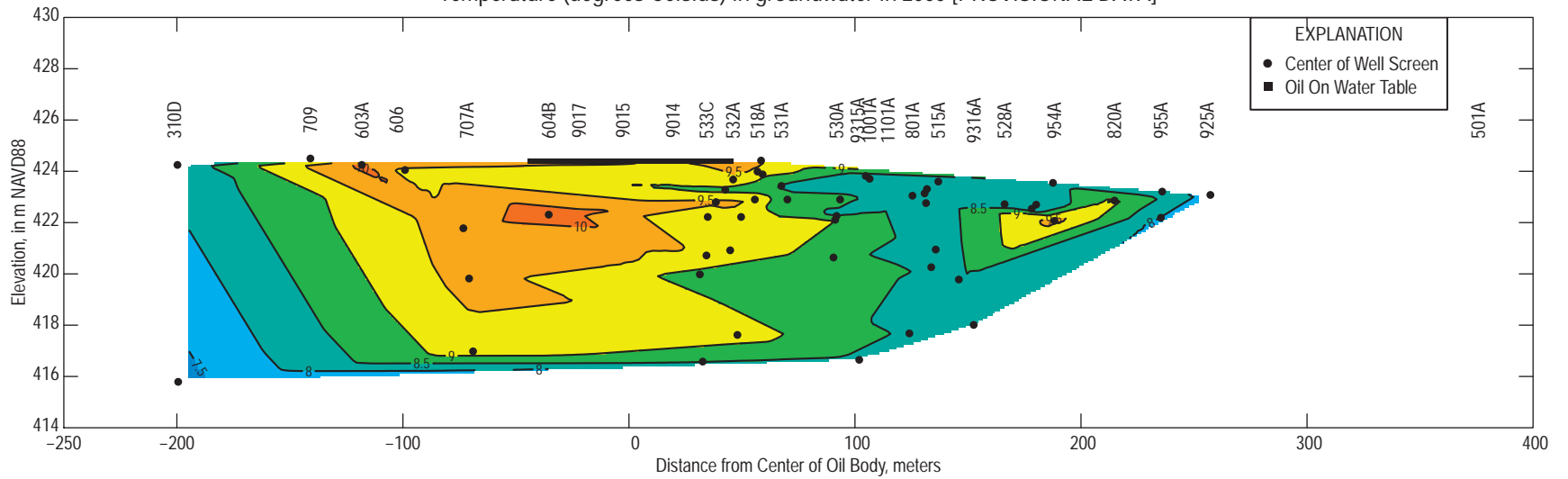
Temperature (degrees Celsius) in groundwater in 1998 [PROVISIONAL DATA]



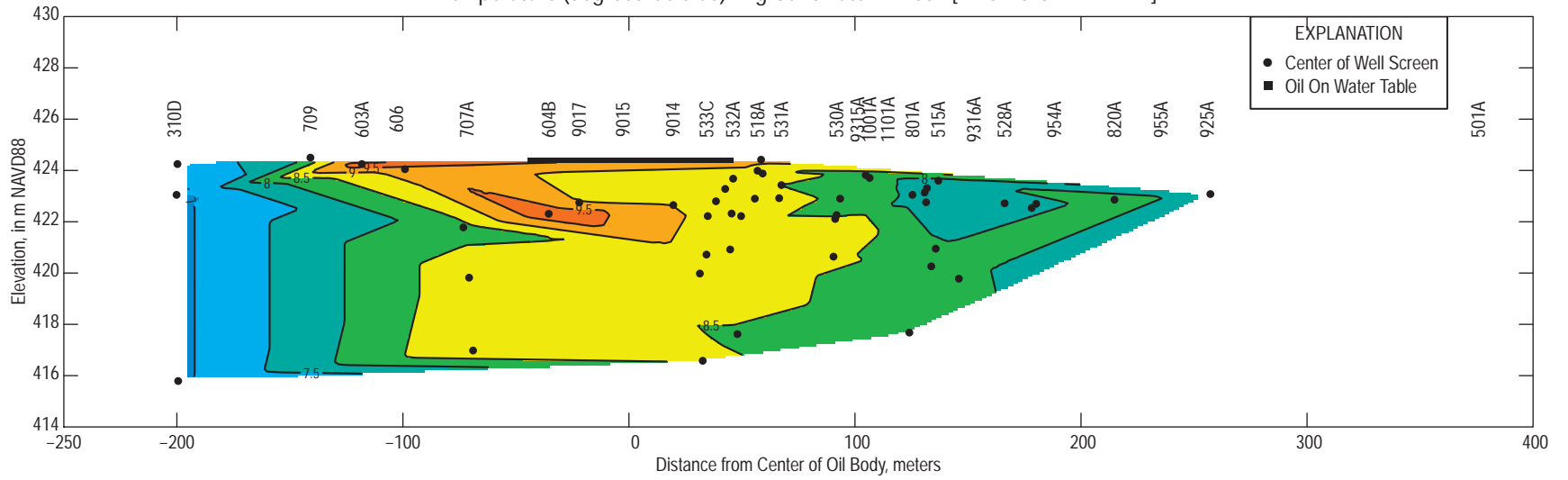
Temperature (degrees Celsius) in groundwater in 1999 [PROVISIONAL DATA]



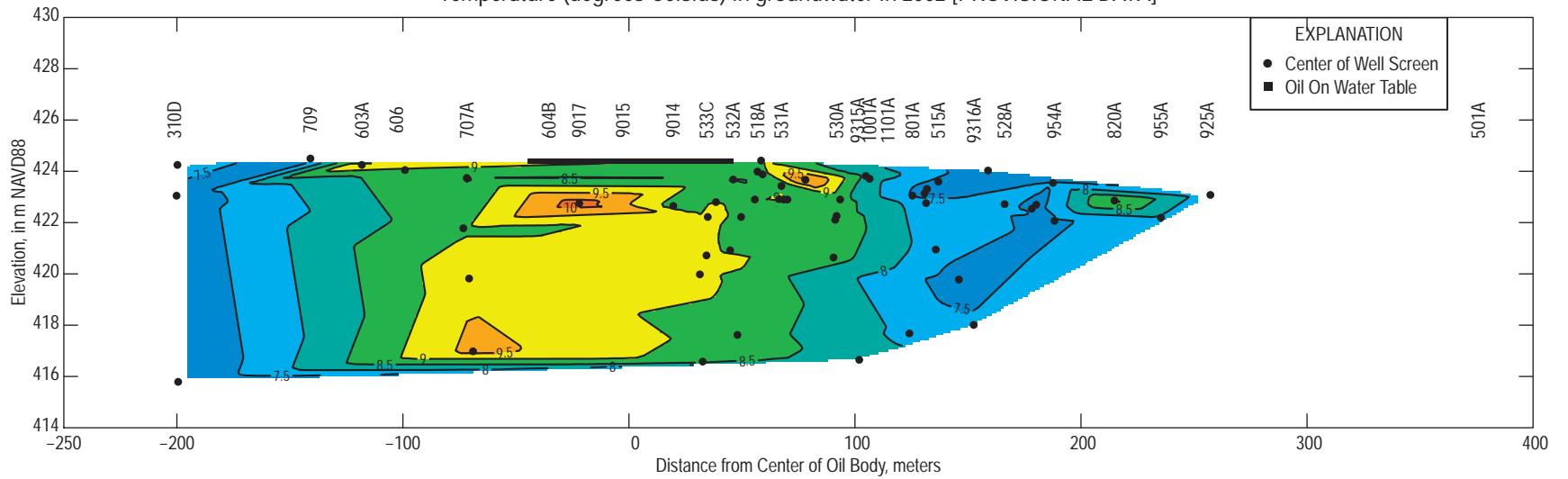
Temperature (degrees Celsius) in groundwater in 2000 [PROVISIONAL DATA]



Temperature (degrees Celsius) in groundwater in 2001 [PROVISIONAL DATA]

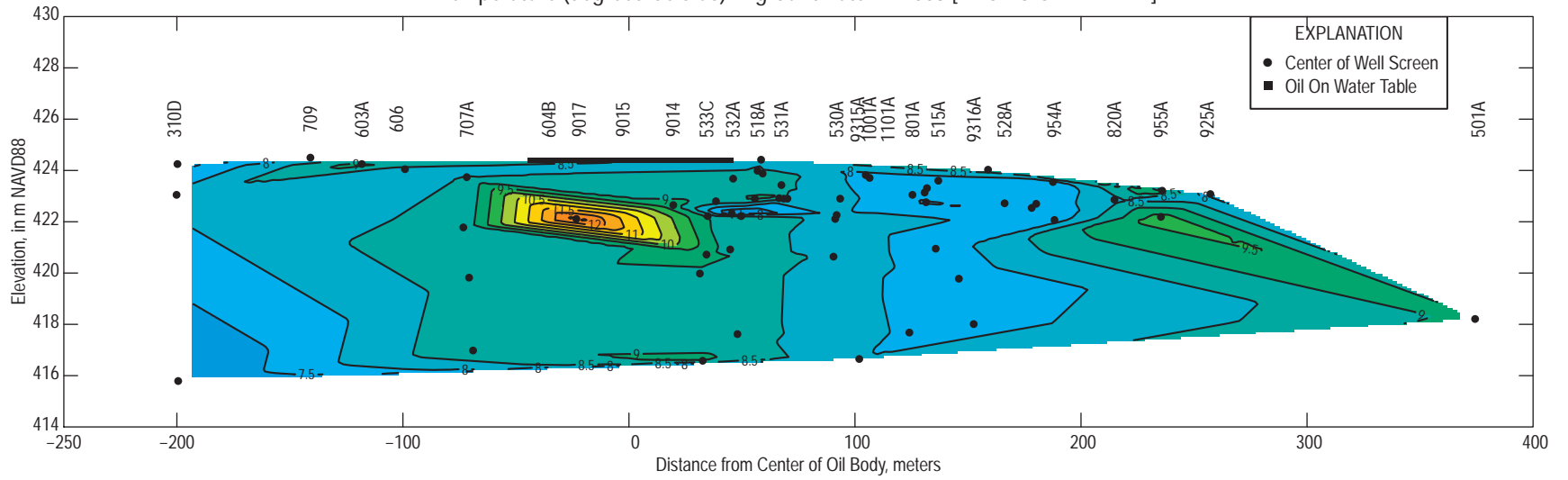


Temperature (degrees Celsius) in groundwater in 2002 [PROVISIONAL DATA]

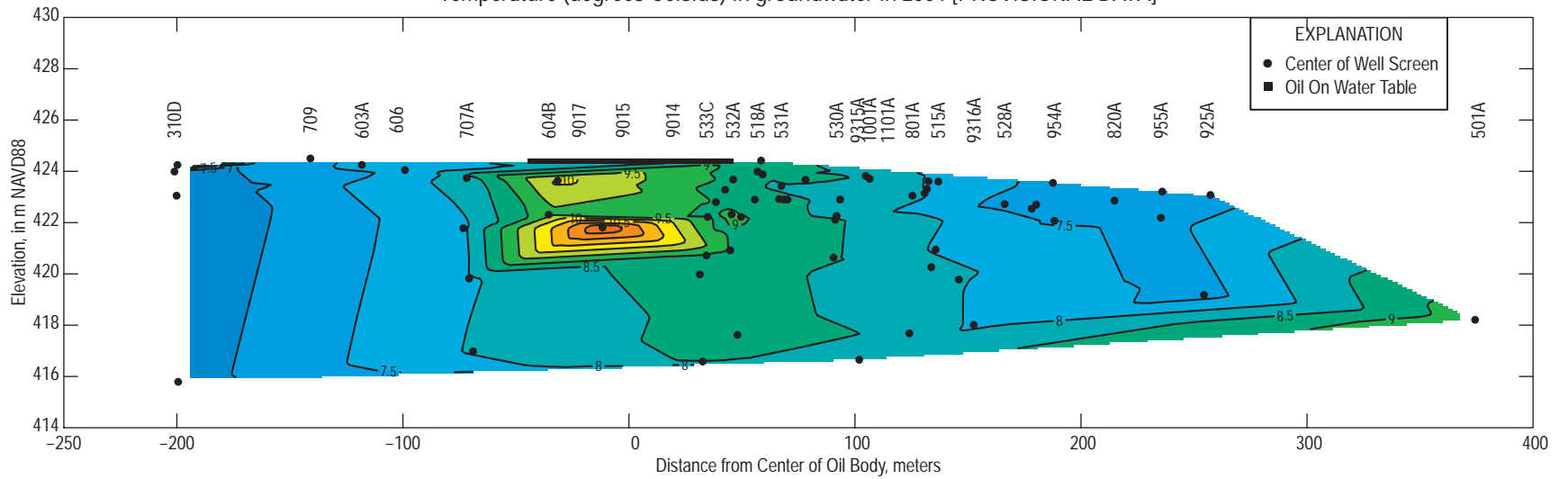




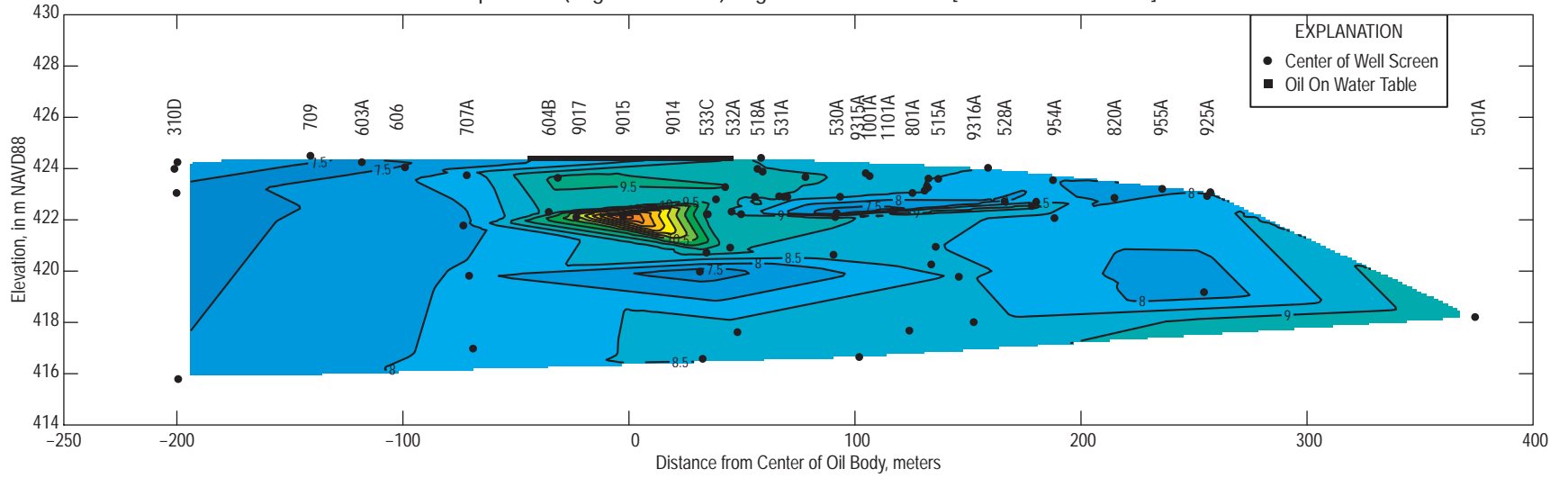
Temperature (degrees Celsius) in groundwater in 2003 [PROVISIONAL DATA]



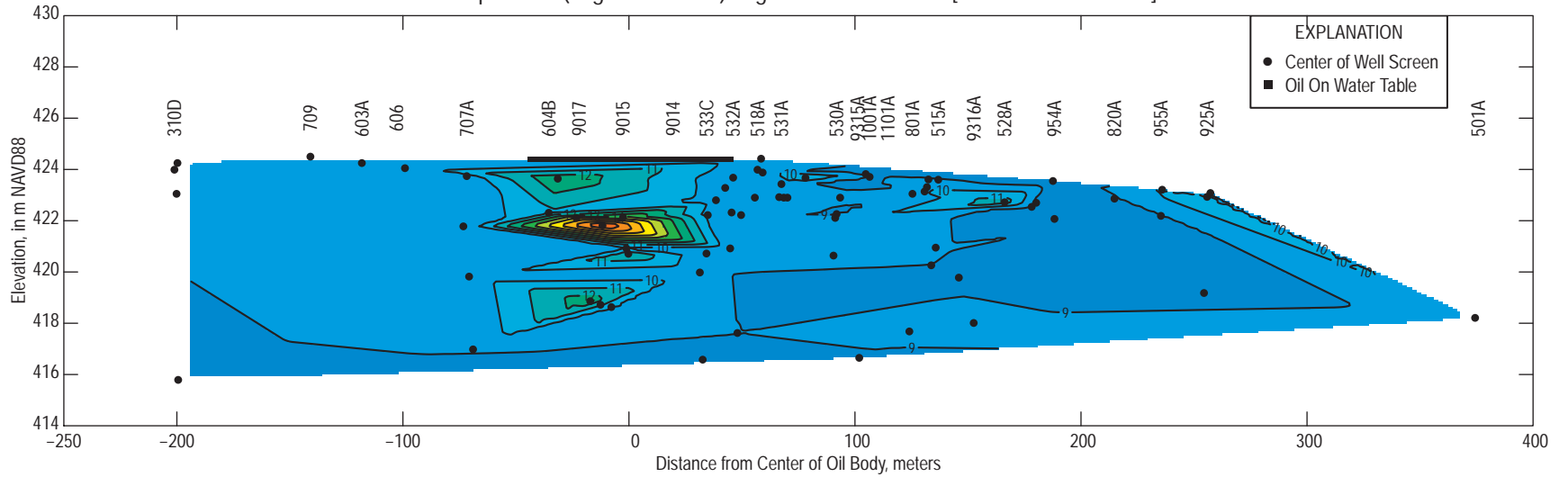
Temperature (degrees Celsius) in groundwater in 2004 [PROVISIONAL DATA]



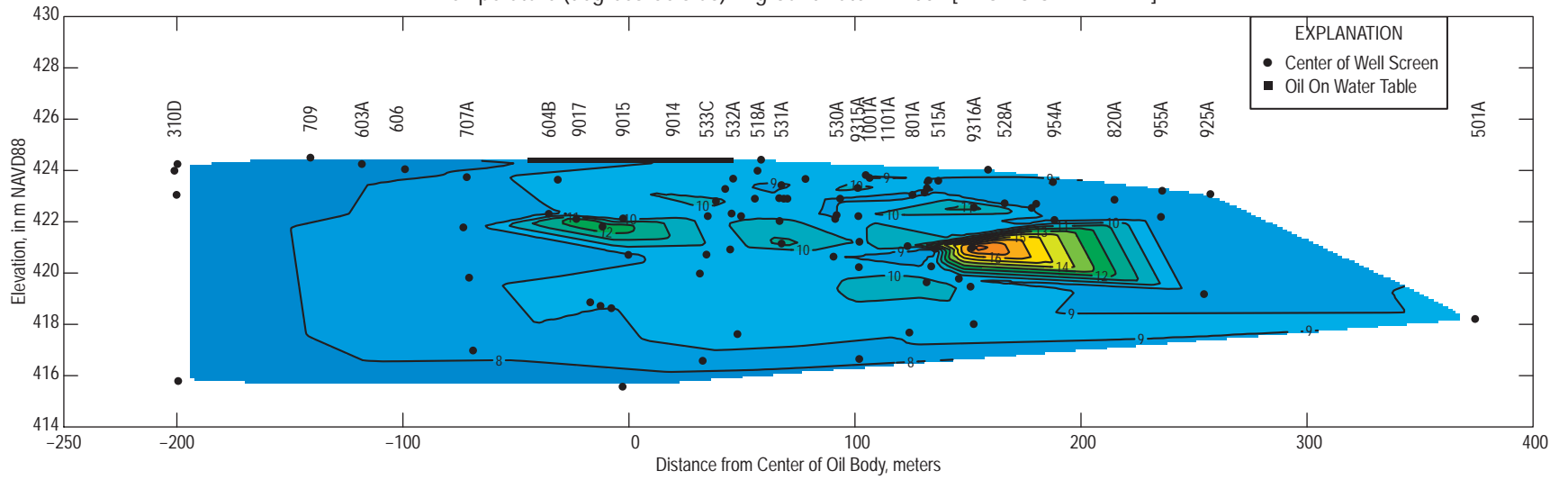
Temperature (degrees Celsius) in groundwater in 2005 [PROVISIONAL DATA]



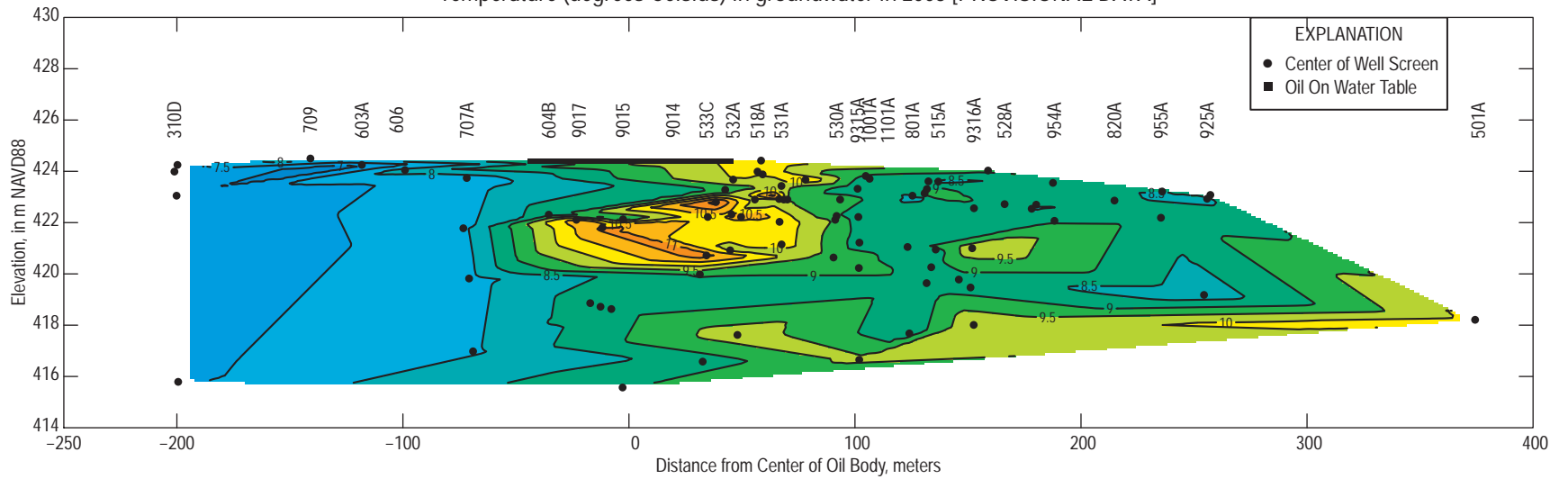
Temperature (degrees Celsius) in groundwater in 2006 [PROVISIONAL DATA]



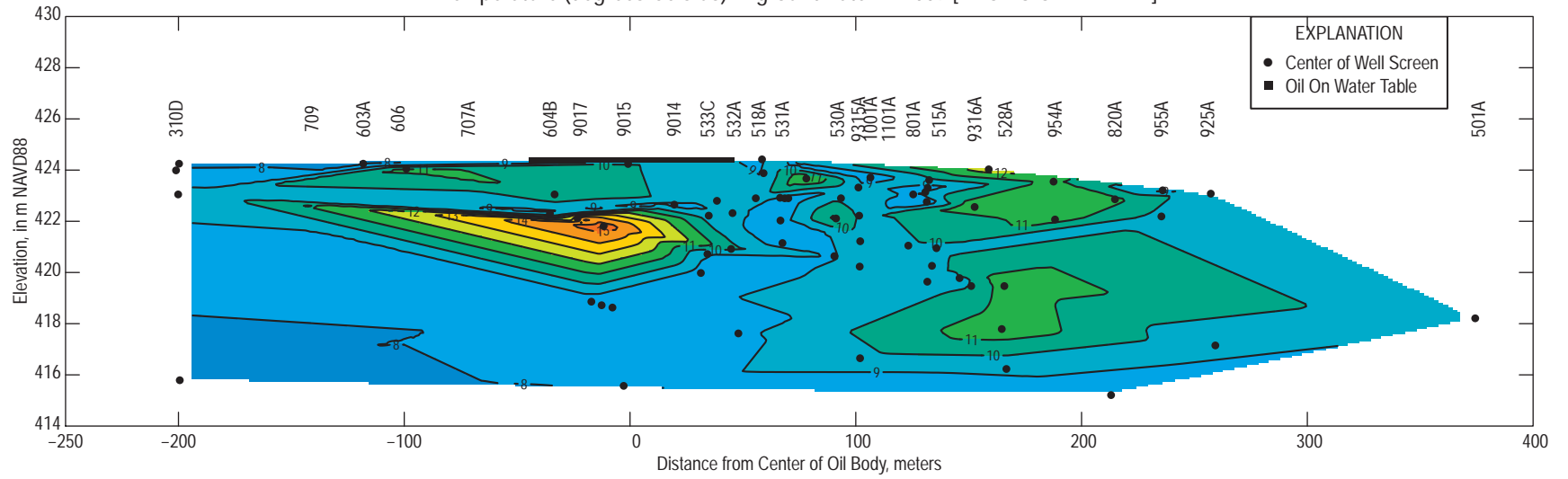
Temperature (degrees Celsius) in groundwater in 2007 [PROVISIONAL DATA]



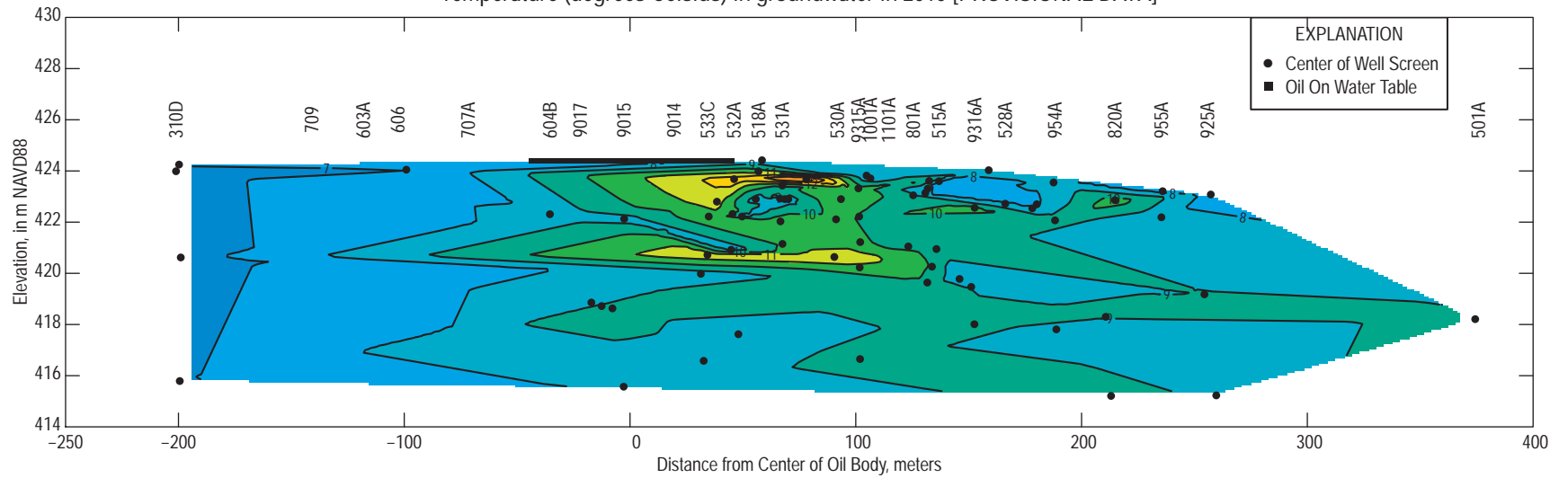
Temperature (degrees Celsius) in groundwater in 2008 [PROVISIONAL DATA]



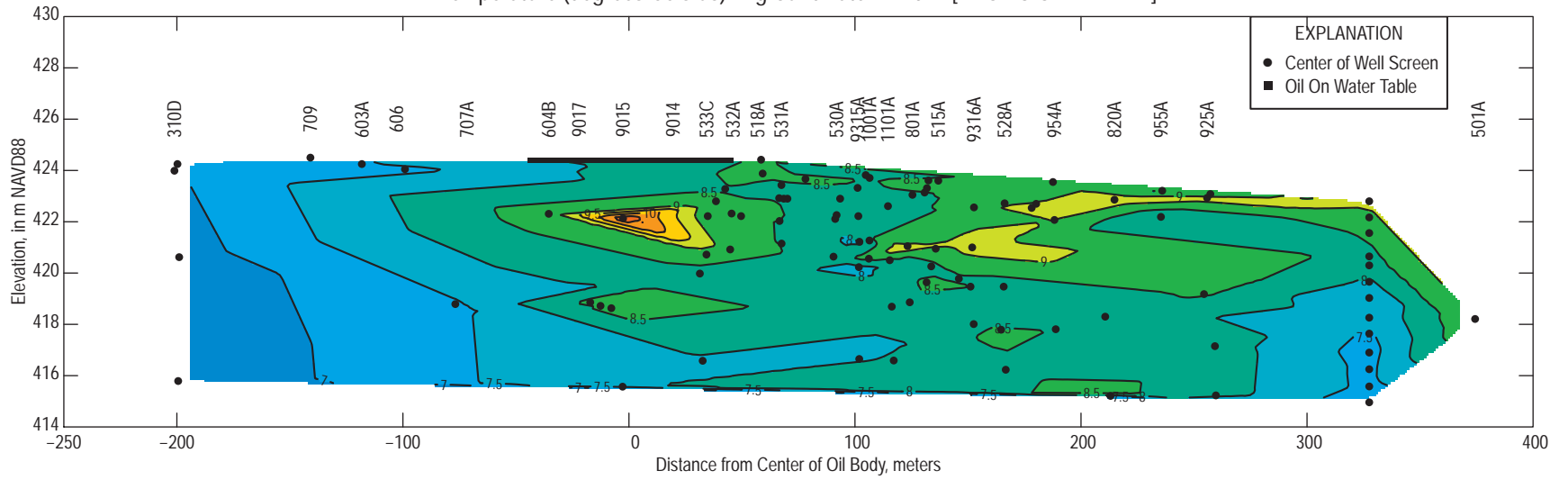
Temperature (degrees Celsius) in groundwater in 2009 [PROVISIONAL DATA]



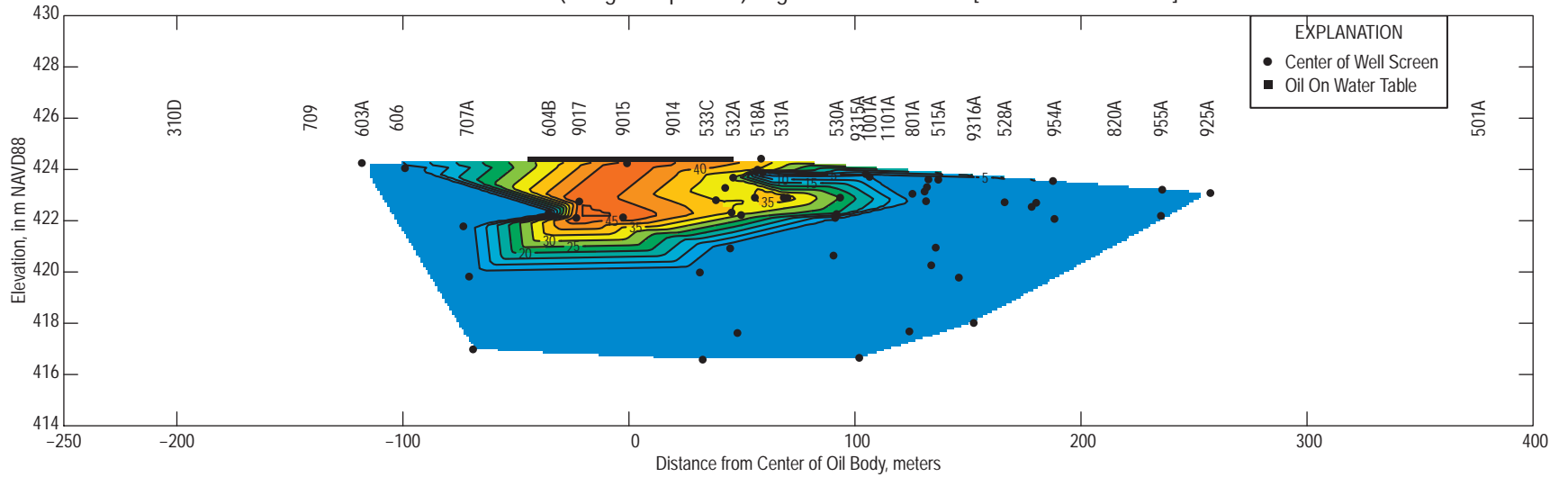
Temperature (degrees Celsius) in groundwater in 2010 [PROVISIONAL DATA]



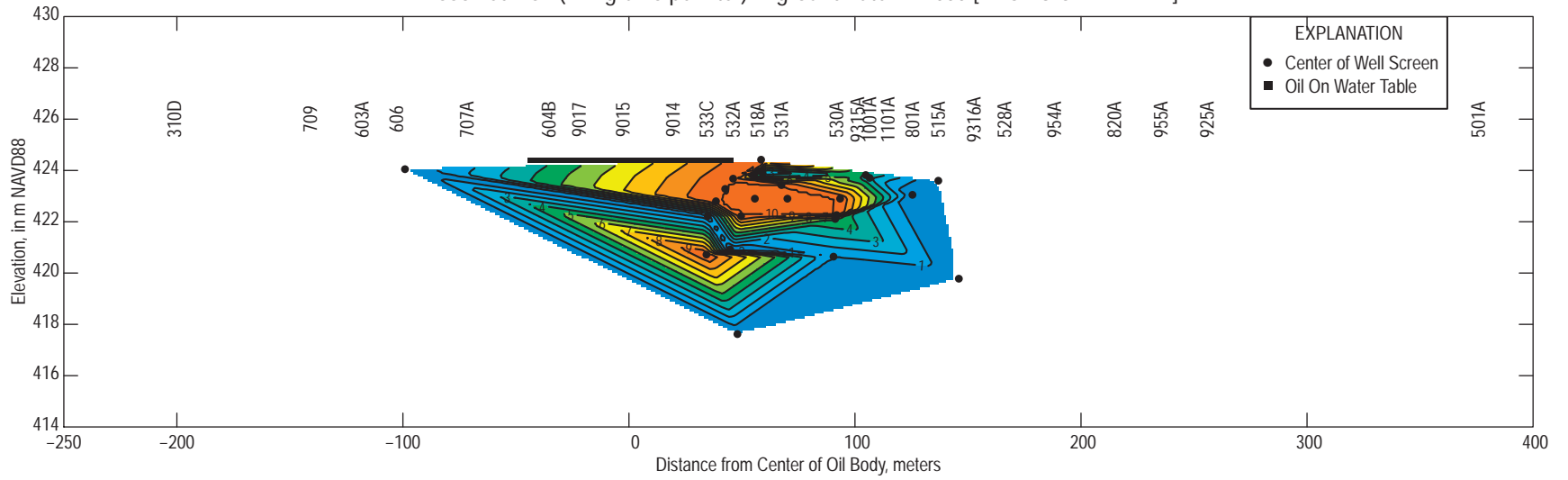
Temperature (degrees Celsius) in groundwater in 2012 [PROVISIONAL DATA]



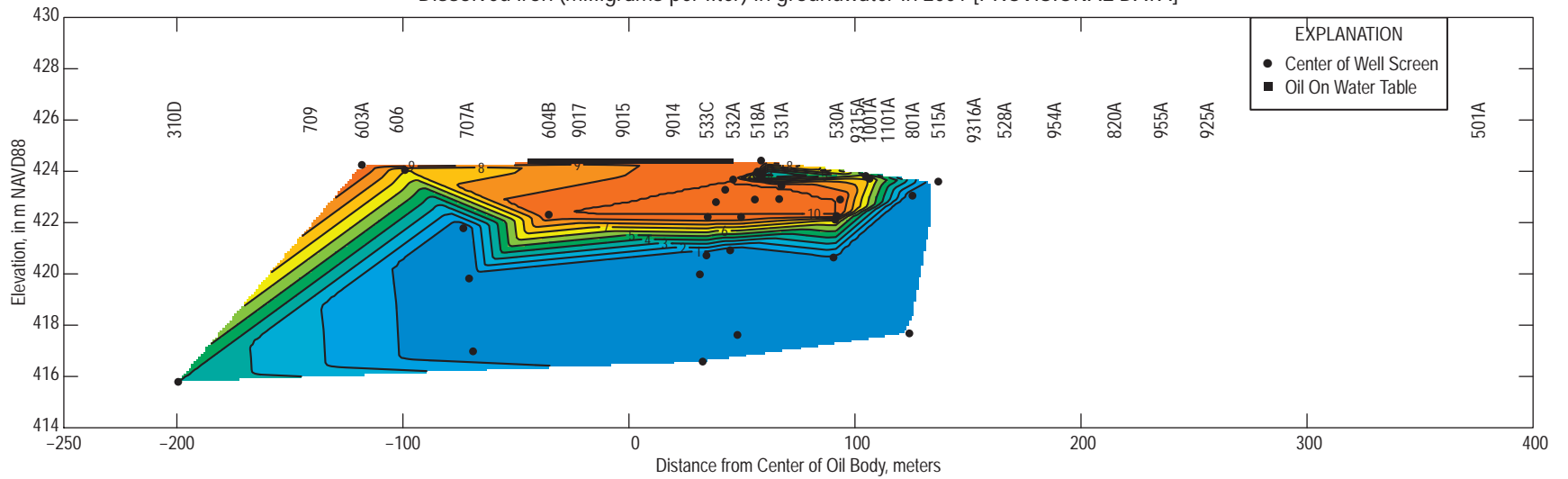
Dissolved Iron (milligrams per liter) in groundwater in 1999 [PROVISIONAL DATA]



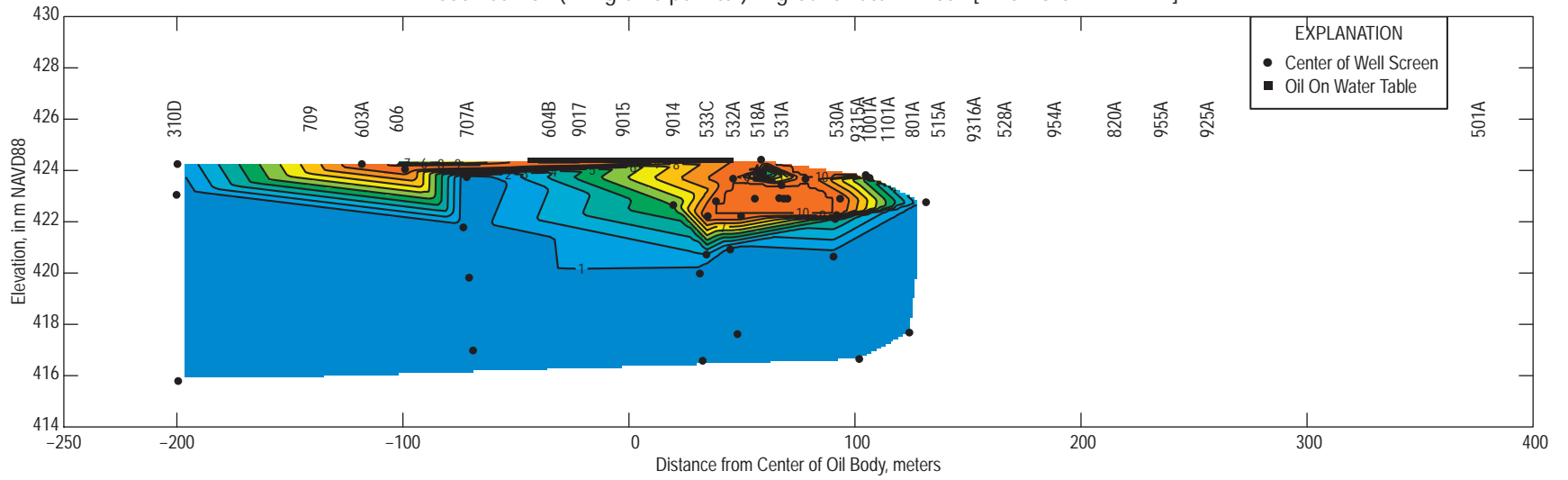
Dissolved Iron (milligrams per liter) in groundwater in 2000 [PROVISIONAL DATA]



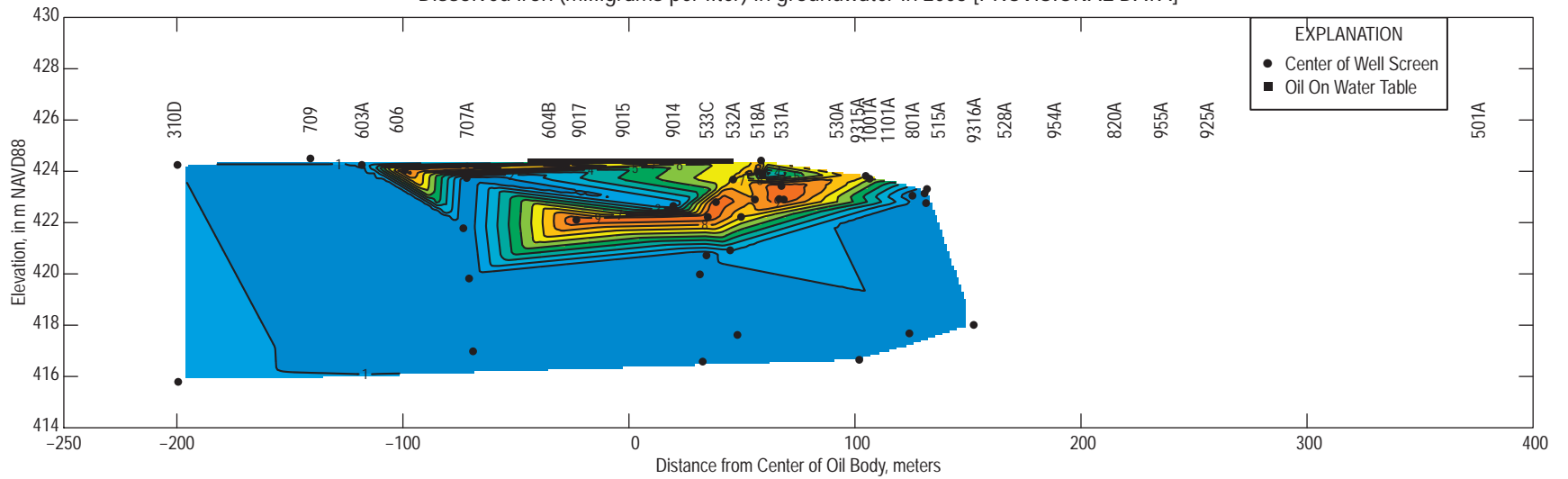
Dissolved Iron (milligrams per liter) in groundwater in 2001 [PROVISIONAL DATA]



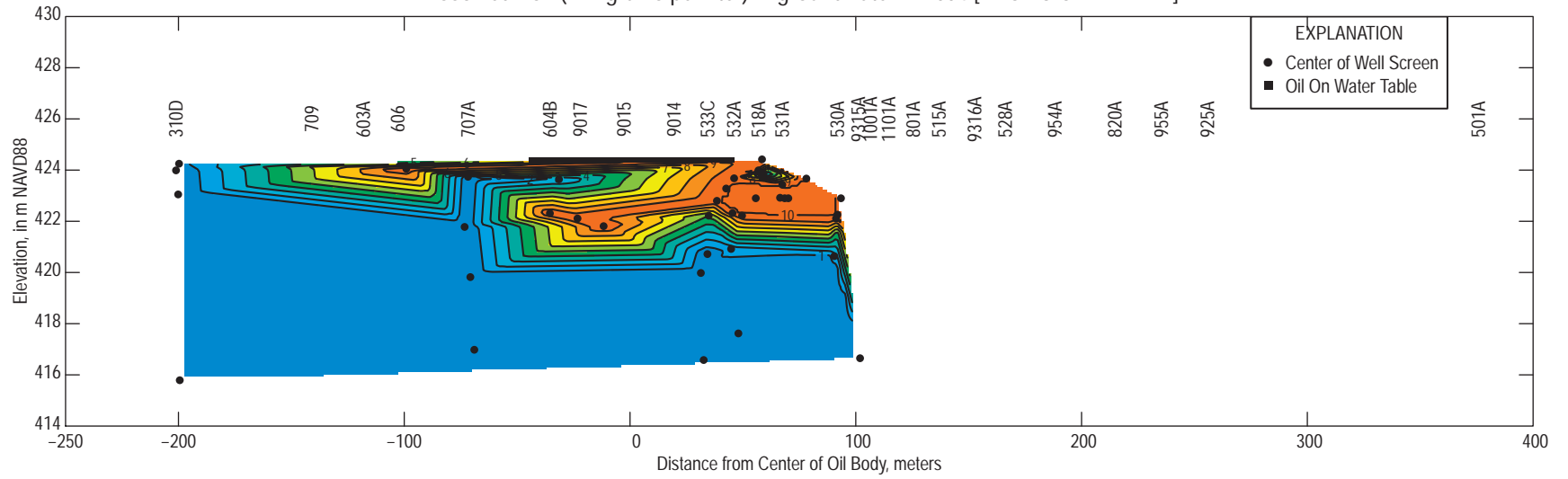
Dissolved Iron (milligrams per liter) in groundwater in 2002 [PROVISIONAL DATA]



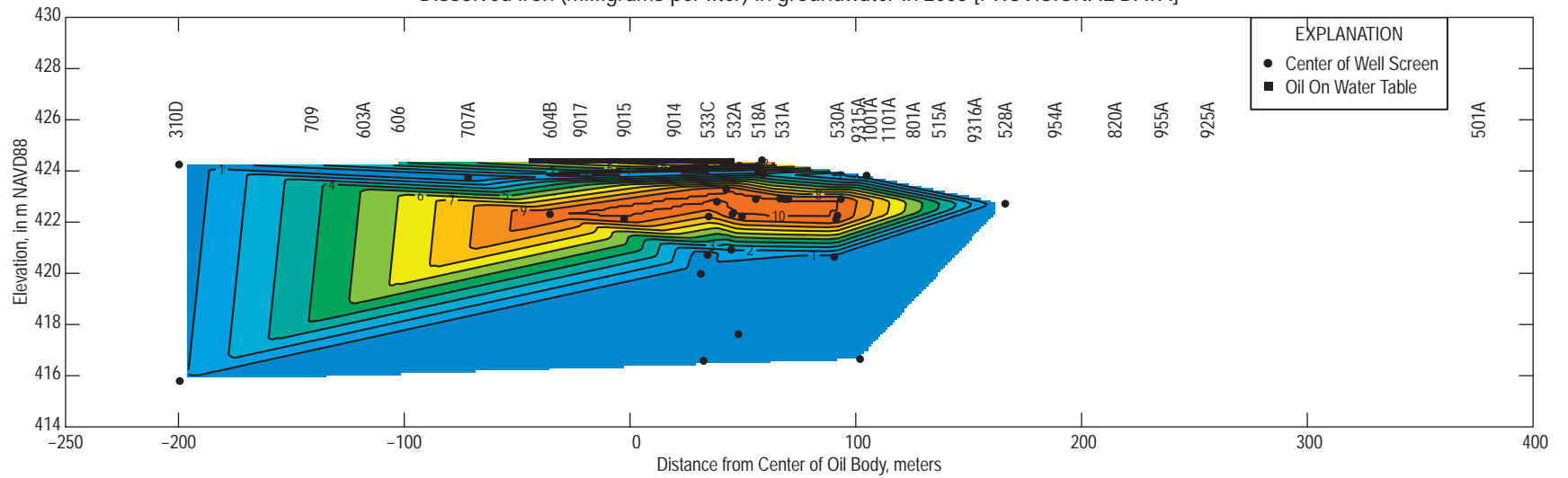
Dissolved Iron (milligrams per liter) in groundwater in 2003 [PROVISIONAL DATA]



Dissolved Iron (milligrams per liter) in groundwater in 2004 [PROVISIONAL DATA]

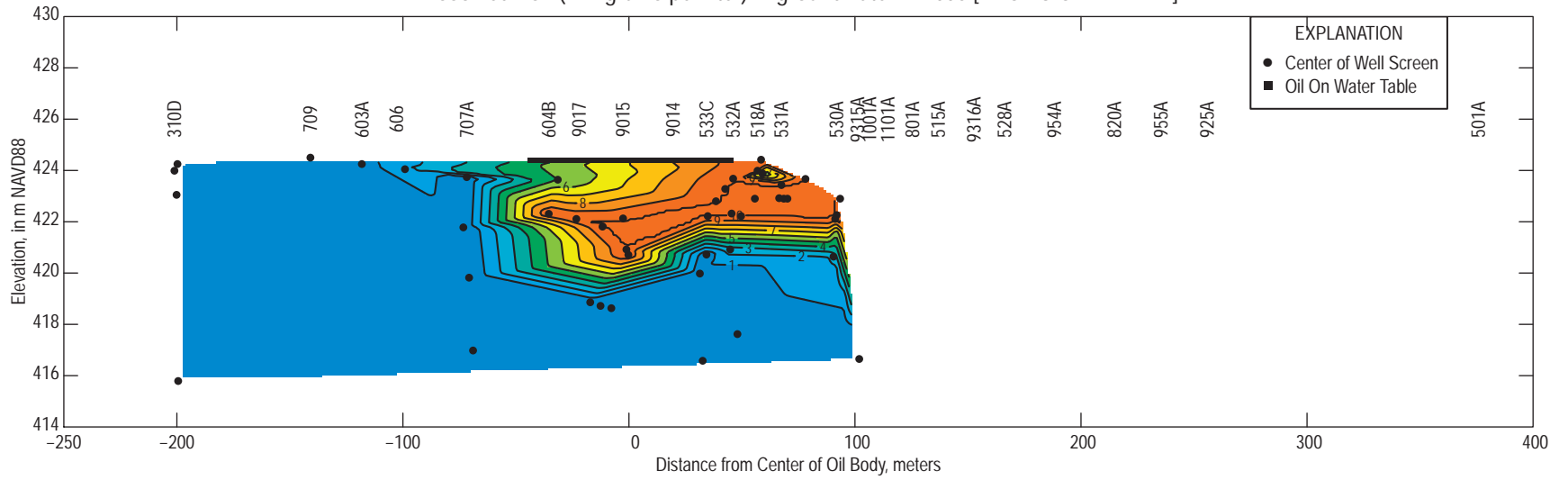


Dissolved Iron (milligrams per liter) in groundwater in 2005 [PROVISIONAL DATA]

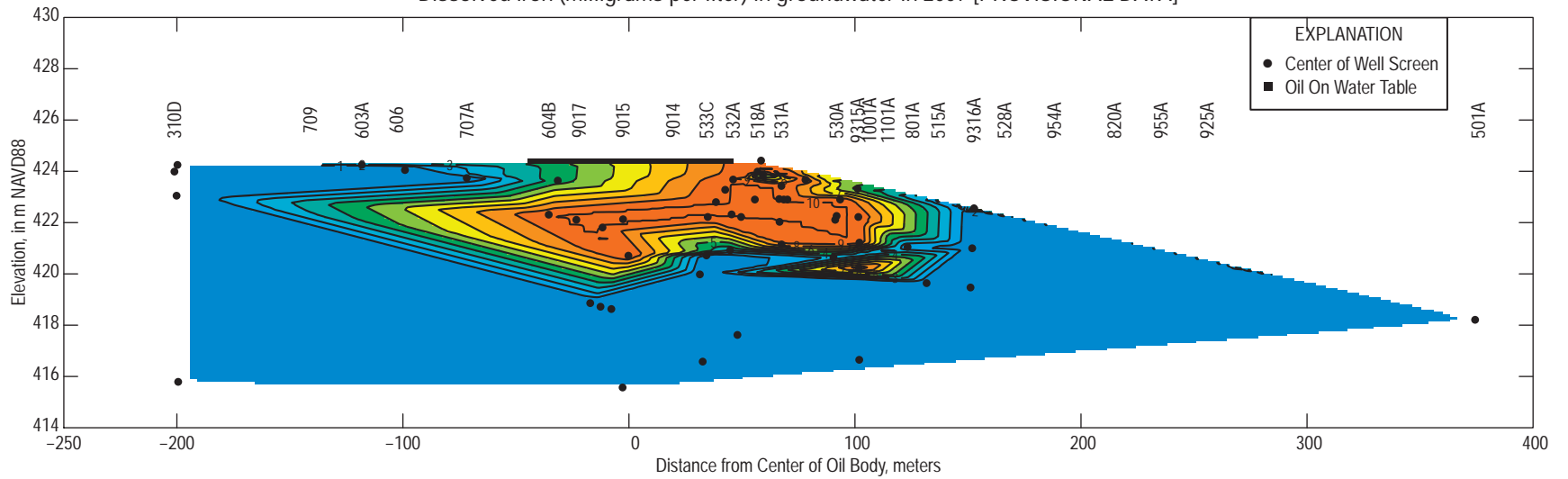




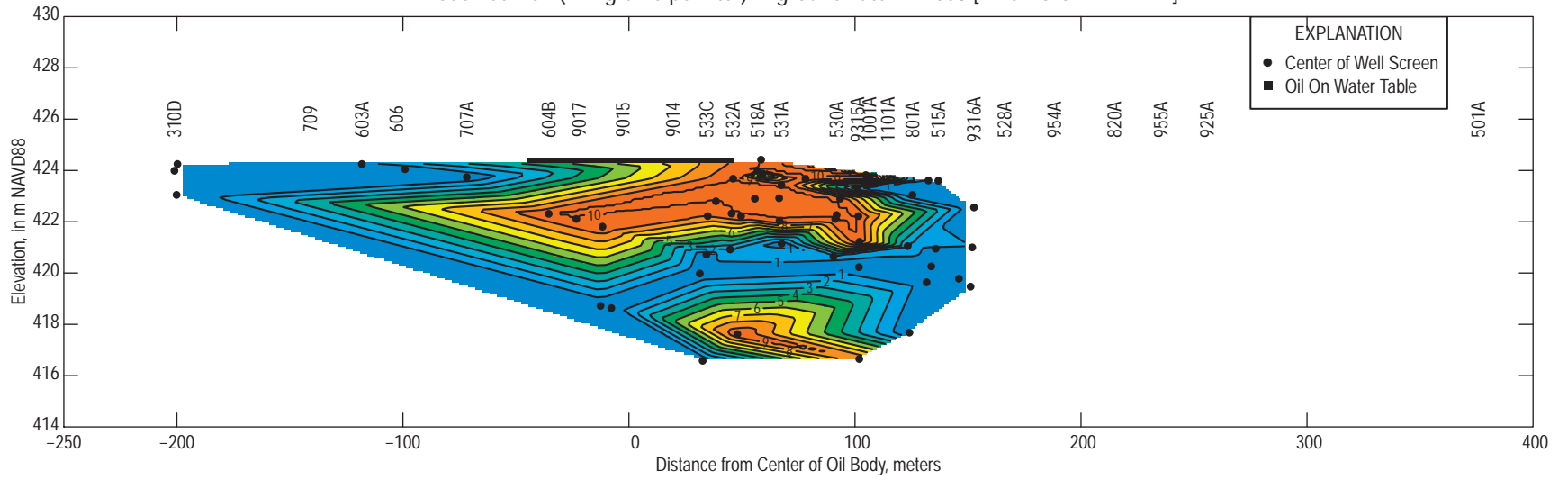
Dissolved Iron (milligrams per liter) in groundwater in 2006 [PROVISIONAL DATA]



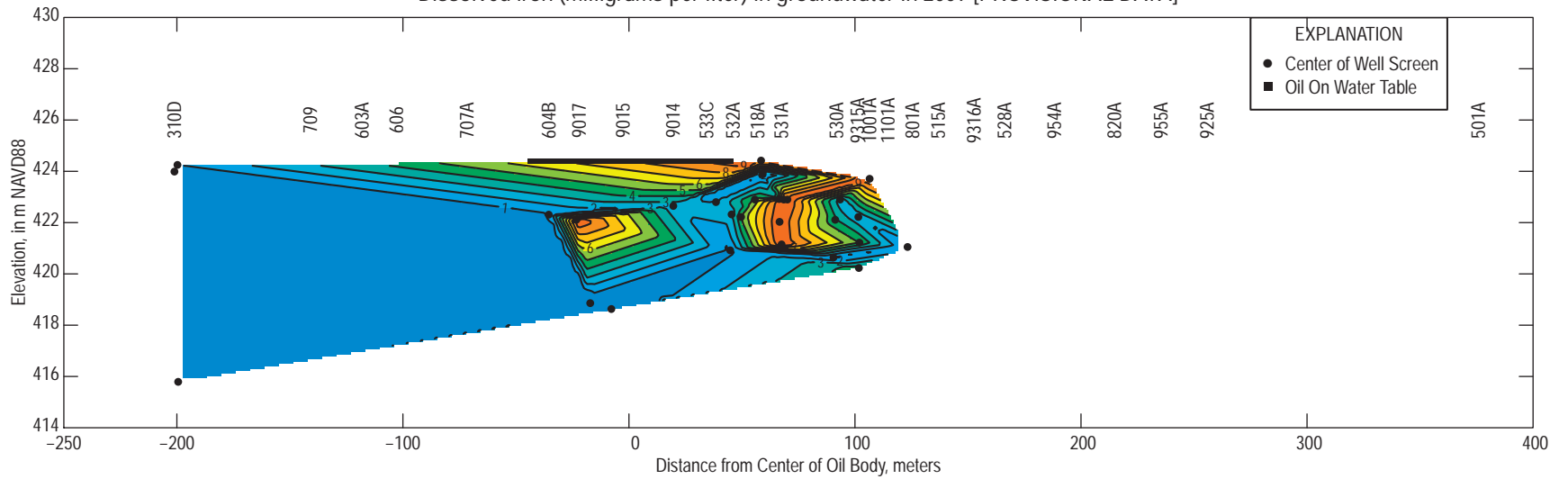
Dissolved Iron (milligrams per liter) in groundwater in 2007 [PROVISIONAL DATA]



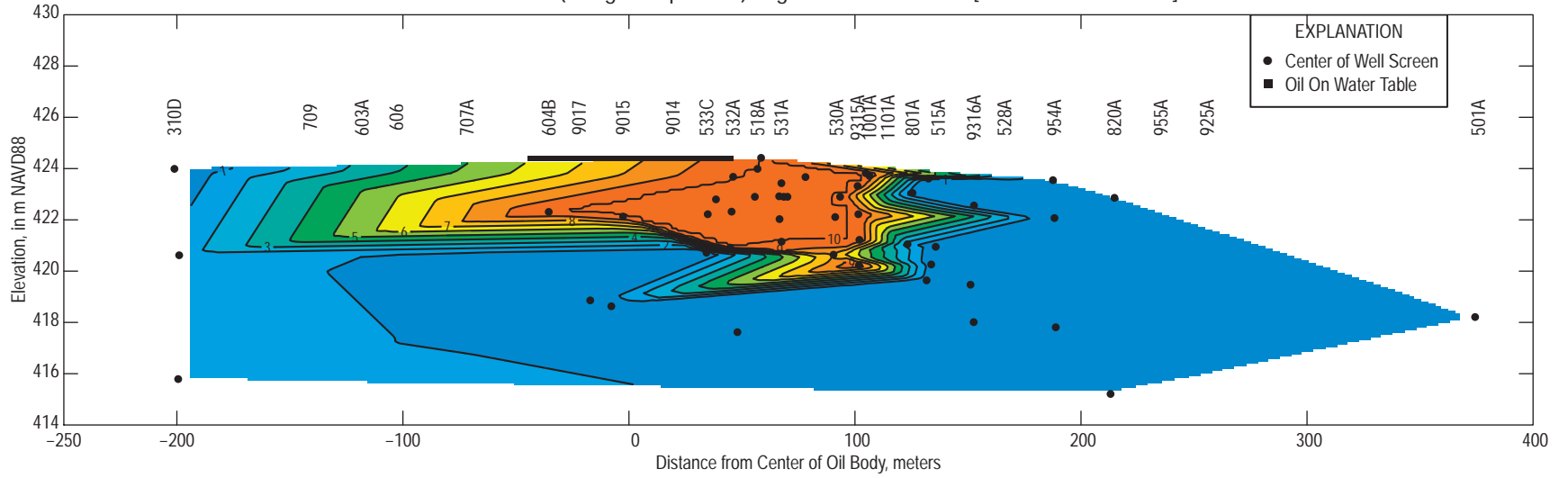
Dissolved Iron (milligrams per liter) in groundwater in 2008 [PROVISIONAL DATA]



Dissolved Iron (milligrams per liter) in groundwater in 2009 [PROVISIONAL DATA]



Dissolved Iron (milligrams per liter) in groundwater in 2010 [PROVISIONAL DATA]



Dissolved Iron (milligrams per liter) in groundwater in 2012 [PROVISIONAL DATA]

