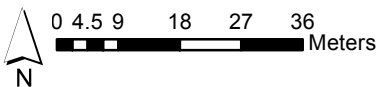
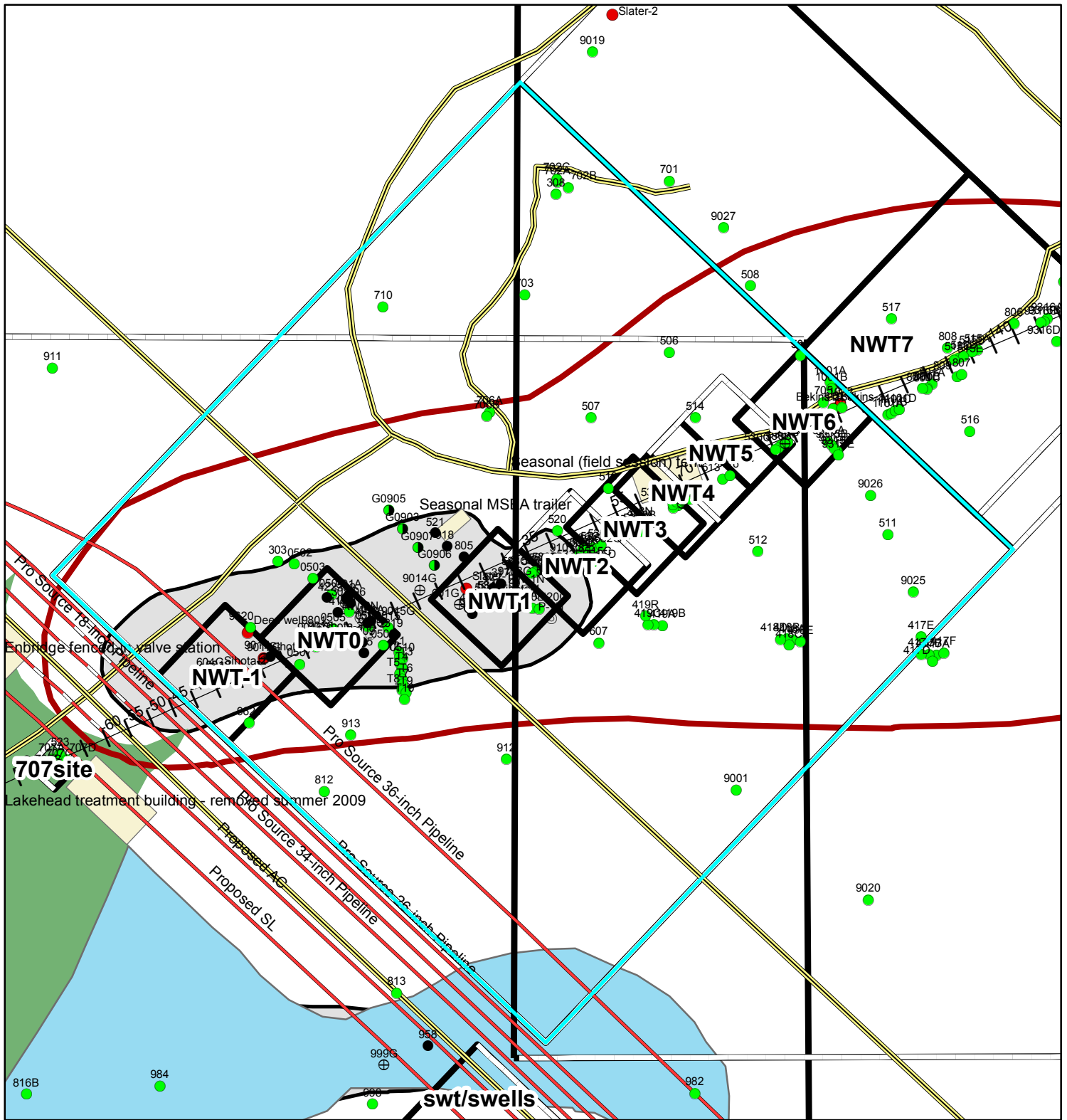


### Explanation

## Bemidji Crude Oil Spill Site NWT Site Map Series

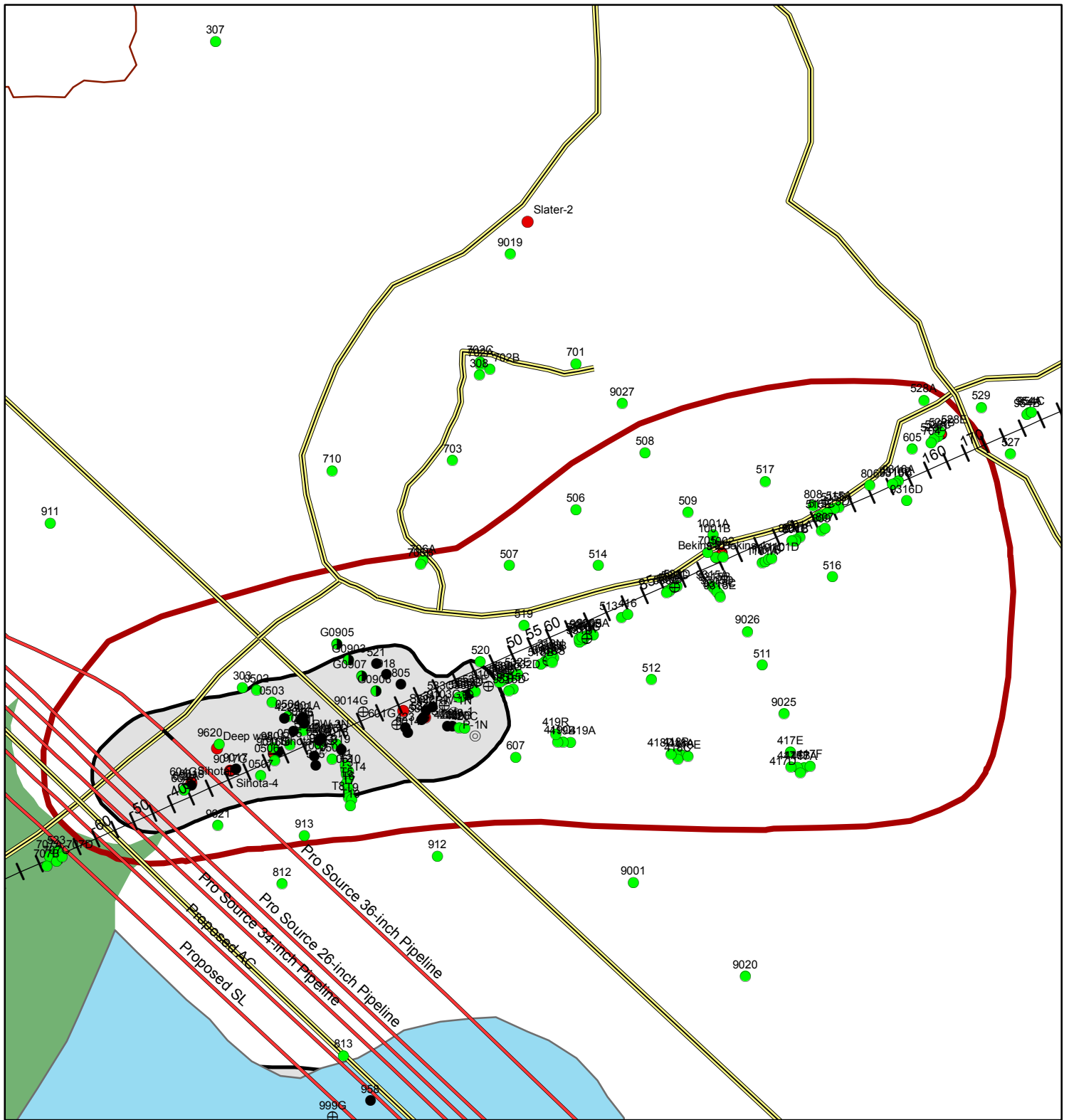
## NWT Map Index

- Enbridge Pipelines
- Roads
- DelinMapOutlines
- Plumes**
- Floating crude oil on WT
- >10 ppb dissolved BTEX Concentration-1996
- Spray Zone
- Oil flowed over land surface to wetland



### Explanation

- |   |                      |
|---|----------------------|
| Enbridge Pipelines                        | lake level           |
| Distance from 421A                        | Dialysis well        |
| 2012 Upcoming Drill Sites                 | Failed well install  |
| Roads                                     | Geophysics well      |
| DelinMapOutlines                          | Multi-level well     |
| <b>Plumes</b>                             | Oil and water obwell |
| Floating crude oil on WT                  | Remediation well     |
| >10 ppb dissolved BTEX Concentration-1996 | Vapor well           |
| Spray Zone                                | Water obwell         |
| Oil flowed over land surface to wetland   |                      |



### Explanation

- Enbridge Pipelines
- Distance from 421A
- 2012 Upcoming Drill Sites
- Roads

### Plumes

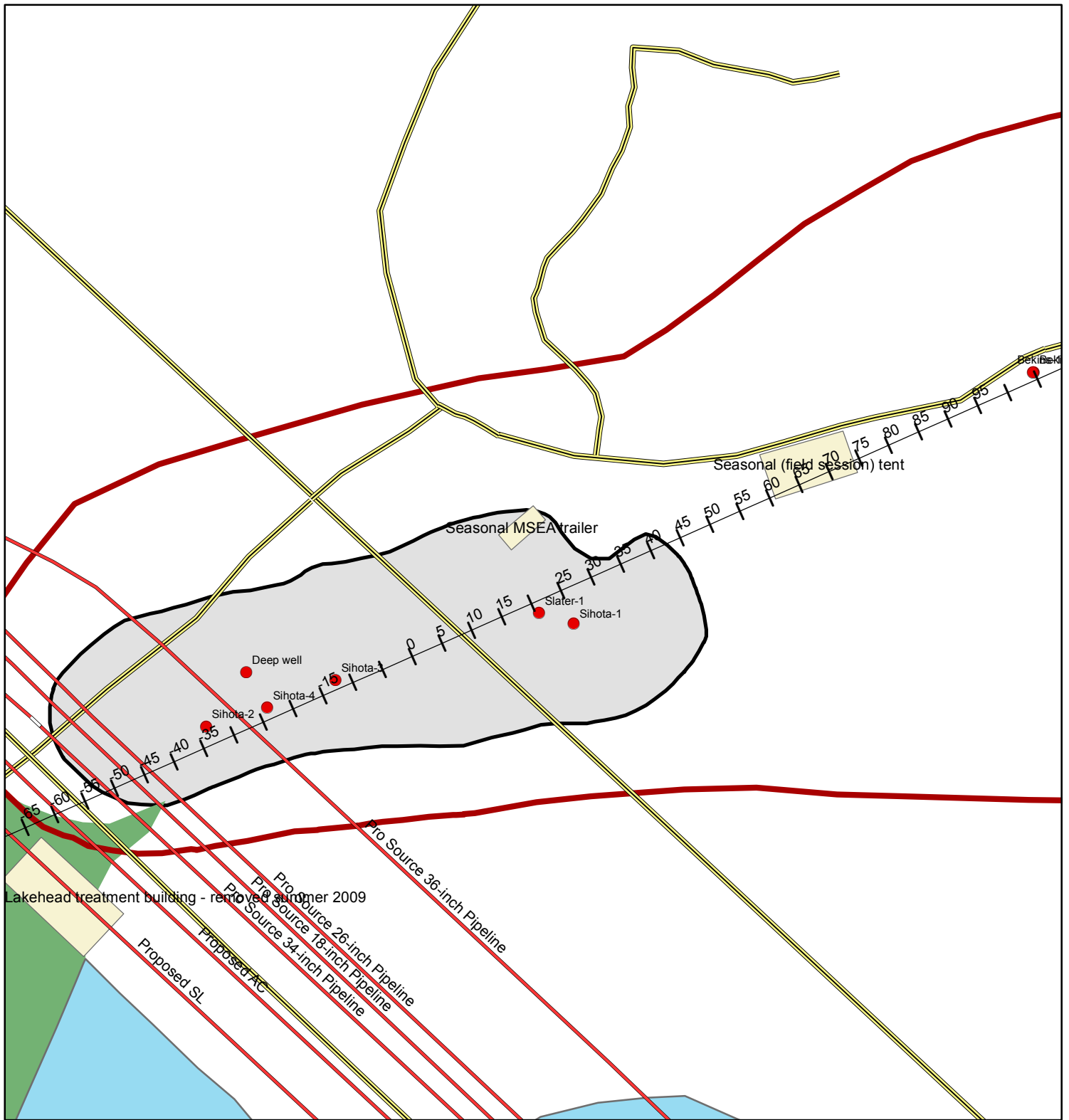
- Floating crude oil on WT
- >10 ppb dissolved BTEX Concentration-1996
- Spray Zone
- Oil flowed over land surface to wetland

### Wells

- lake level
- Dialysis well
- Failed well install
- Geophysics well
- Multi-level well
- Oil and water obwell
- Remediation well
- Vapor well
- Water obwell

## Bemidji Crude Oil Spill Site NWT Site Map Series

# NWT All Enlarged

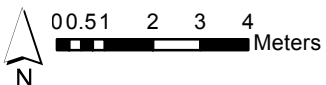
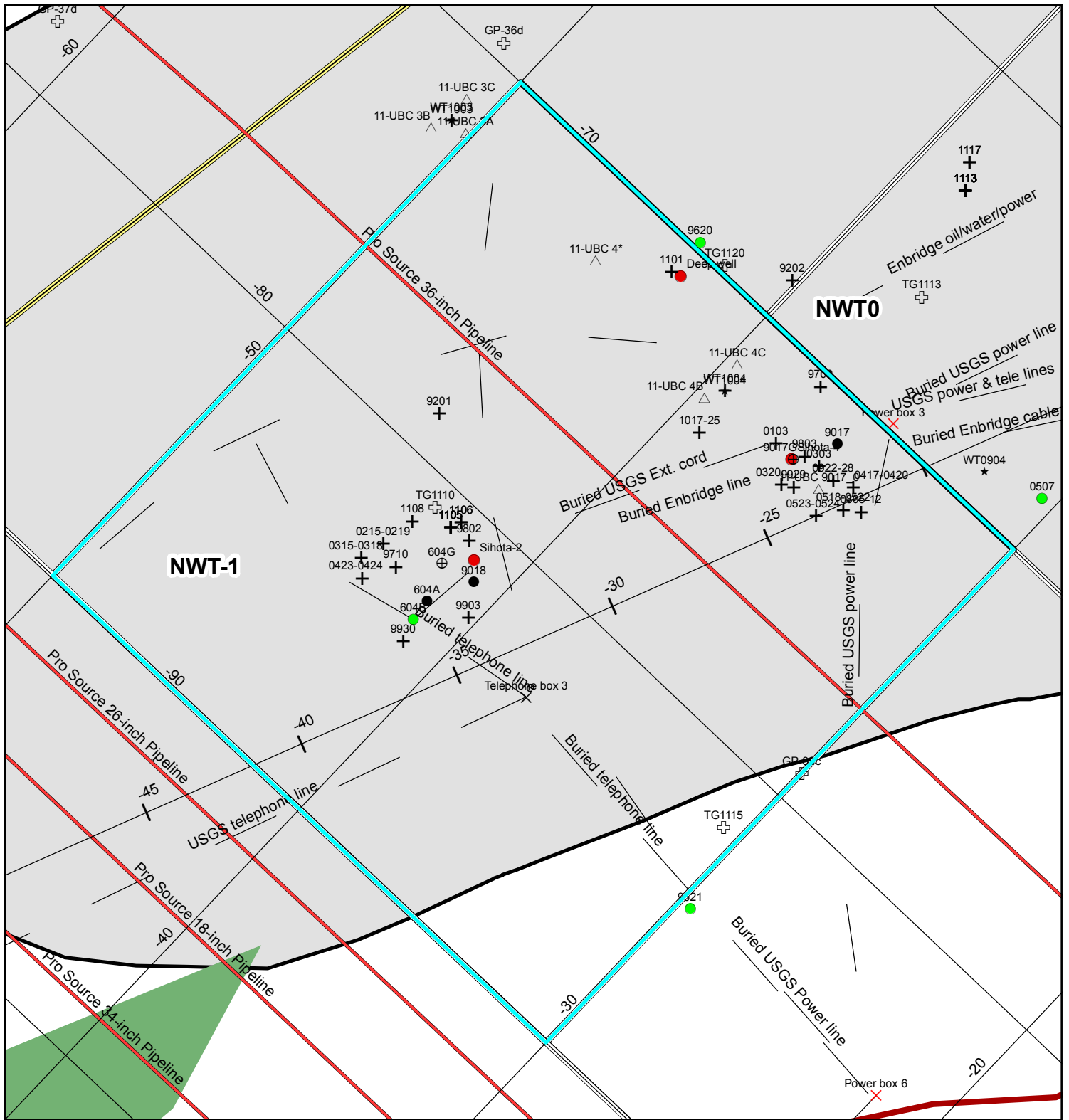


**Explanation**

- Enbridge Pipelines
- Distance from 421A
- 2012 Upcoming Drill Sites
- Roads
- Plumes**
- Floating crude oil on WT
- >10 ppb dissolved BTEX Concentration-1996
- Spray Zone
- Oil flowed over land surface to wetland

**Bemidji Crude Oil Spill Site  
NWT Site Map Series**

**2012 Planned Drilling  
Near North Oil Body**



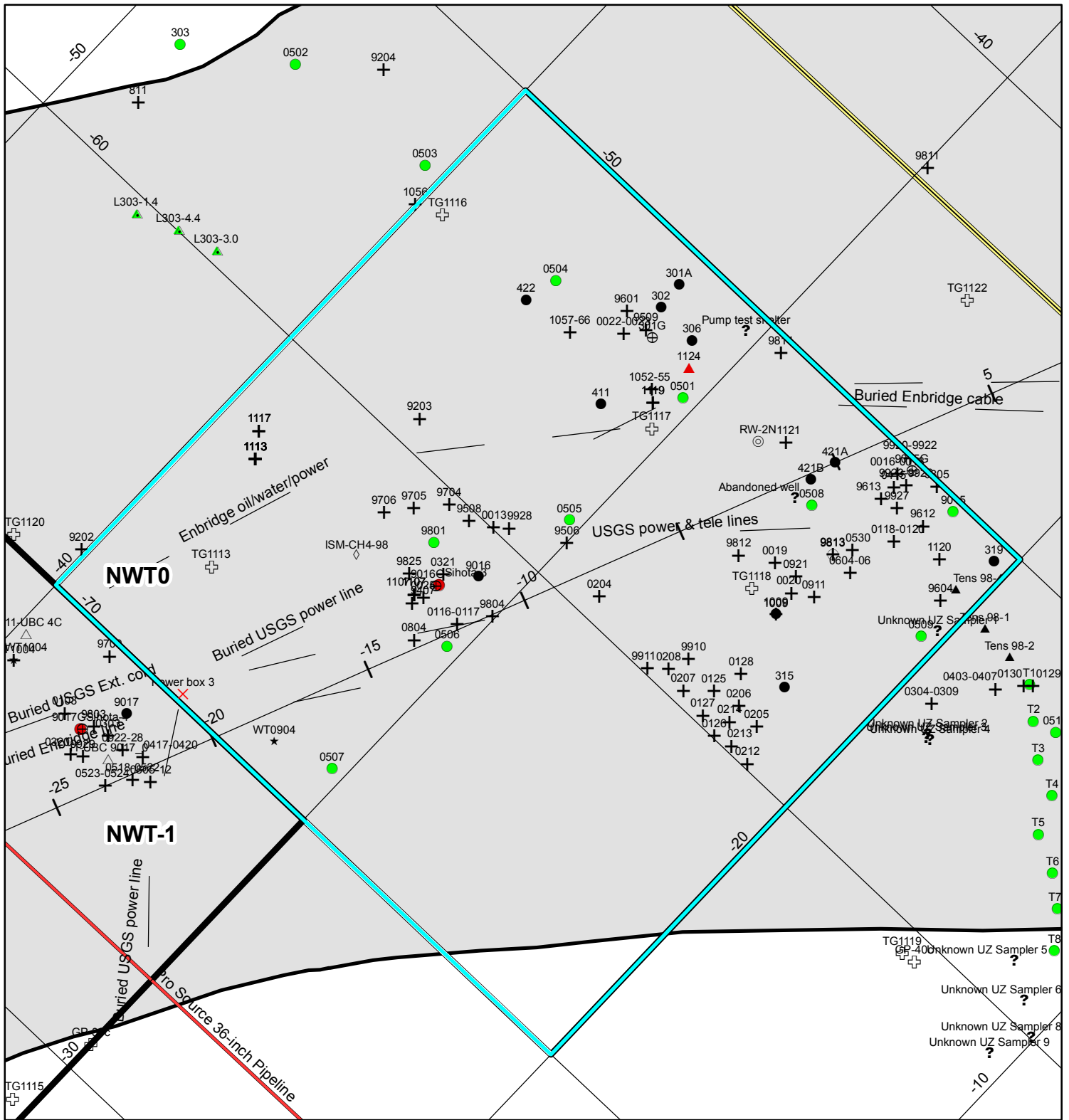
**Bemidji Crude Oil Spill Site  
NWT Site Map Series**

**NWT-1**

- |  |  |   |
|--|--|---|
| <ul style="list-style-type: none"> <li> Enbridge Pipelines</li> <li> Distance from 421A</li> <li> 2012 Upcoming Drill Sites</li> <li> Roads</li> <li> Buried Cables</li> <li> DelinMap Outlines</li> <li><b>Plumes</b></li> <li> Floating crude oil on WT</li> <li> &gt;10 ppb dissolved BTEX Concentration-1996</li> <li> Spray Zone</li> <li> Oil flowed over land surface to wetland</li> </ul> | <p><b>Wells</b></p> <ul style="list-style-type: none"> <li> lake level</li> <li> Dialysis well</li> <li> Failed well install</li> <li> Geophysics well</li> <li> Multi-level well</li> <li> Oil and water obwell</li> <li> Remediation well</li> <li> Vapor well</li> <li> Water obwell</li> </ul> <p><b>Test Holes</b></p> <ul style="list-style-type: none"> <li> test hole</li> <li> geoprobe test hole</li> <li> test hole, surface soil sample</li> </ul> | <p><b>Other Equipment</b></p> <ul style="list-style-type: none"> <li> Benchmark</li> <li> Geophysics electrode</li> <li> Power box</li> <li> Telephone box</li> <li> Lake Level</li> <li> Microcosm</li> <li> Passive Gas Sampler</li> <li> Rupture site</li> <li> Staff gage</li> <li> Soil CO2 Flux</li> <li> Suction lysimeter</li> <li> Tensiometer</li> <li> Unknown</li> <li> Water tube</li> </ul> |
|--|--|---|

**Explanation**



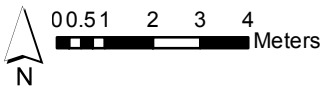
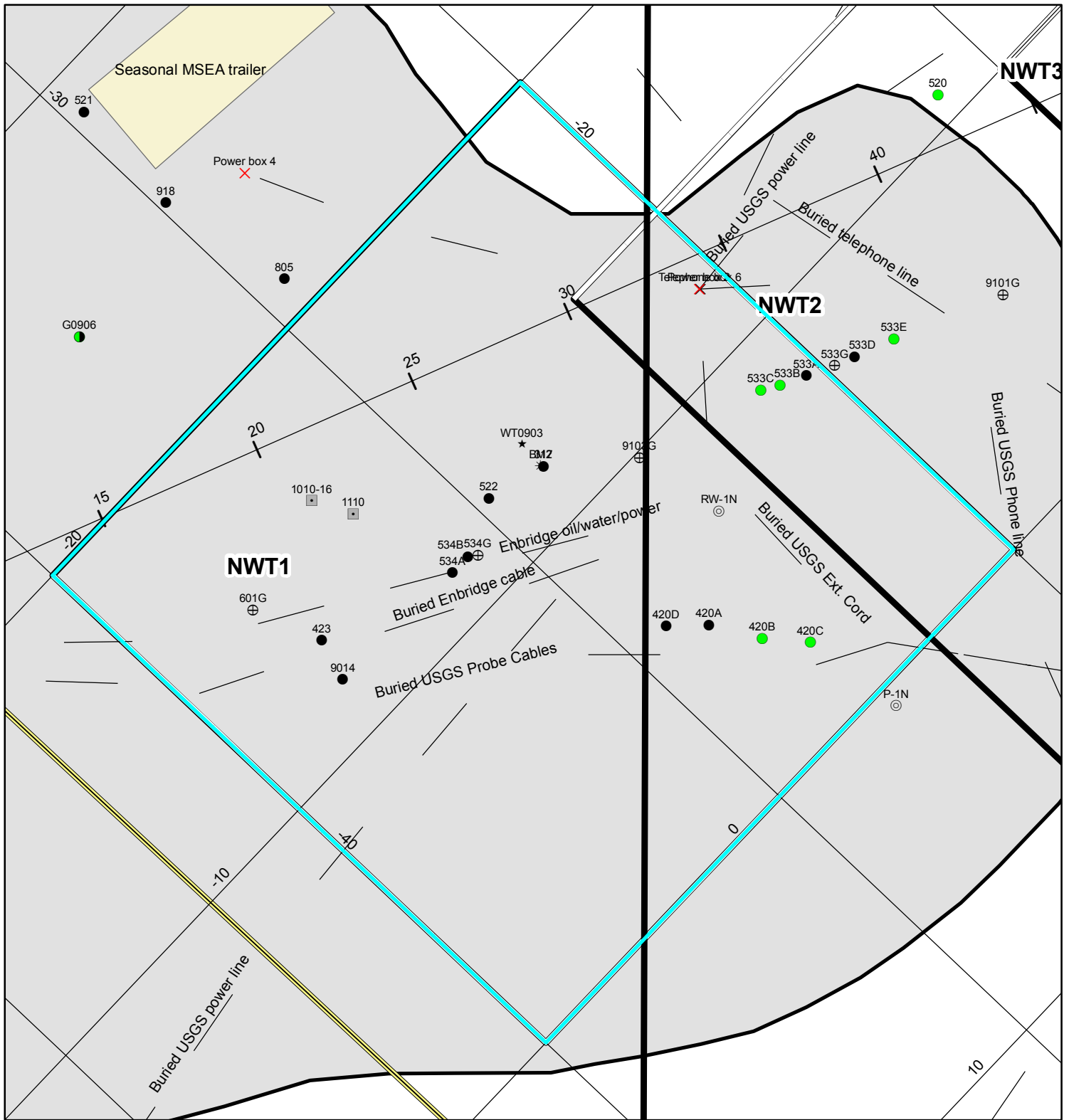


# Bemidji Crude Oil Spill Site NWT Site Map Series

## NWT0

### Explanation

- |   |   |   |
|---|---|---|
| <ul style="list-style-type: none"> <li> Enbridge Pipelines</li> <li> Distance from 421A</li> <li> 2012 Upcoming Drill Sites</li> <li> Roads</li> <li> Buried Cables</li> <li> DelinMapOutlines</li> <li><b>Plumes</b></li> <li> Floating crude oil on WT</li> <li> &gt;10 ppb dissolved BTEX Concentration-1996</li> <li> Spray Zone</li> <li> Oil flowed over land surface to wetland</li> </ul> | <ul style="list-style-type: none"> <li><b>Wells</b></li> <li> lake level</li> <li> Dialysis well</li> <li> Failed well install</li> <li> Geophysics well</li> <li> Multi-level well</li> <li> Oil and water obwell</li> <li> Remediation well</li> <li> Vapor well</li> <li> Water obwell</li> <li><b>Test Holes</b></li> <li> test hole</li> <li> geoprobe test hole</li> <li> test hole, surface soil sample</li> </ul> | <ul style="list-style-type: none"> <li><b>Other Equipment</b></li> <li> Benchmark</li> <li> Geophysics electrode</li> <li> Power box</li> <li> Telephone box</li> <li> Lake Level</li> <li> Microcosm</li> <li> Passive Gas Sampler</li> <li> Rupture site</li> <li> Staff gage</li> <li> Soil CO2 Flux</li> <li> Suction lysimeter</li> <li> Tensiometer</li> <li> Unknown</li> <li> Water tube</li> </ul> |
|---|---|---|



## Bemidji Crude Oil Spill Site NWT Site Map Series

### NWT1

| Plumes |   | Wells |                      | Other Equipment |                      |
|--------|---|-------|----------------------|-----------------|----------------------|
|        | Floating crude oil on WT                  |       | lake level           |                 | Benchmark            |
|        | >10 ppb dissolved BTEX Concentration-1996 |       | Dialysis well        |                 | Geophysics electrode |
|        | Spray Zone                                |       | Failed well install  |                 | Power box            |
|        | Oil flowed over land surface to wetland   |       | Geophysics well      |                 | Telephone box        |
|        | Enbridge Pipelines                        |       | Multi-level well     |                 | Lake Level           |
|        | Distance from 421A                        |       | Oil and water obwell |                 | Microcosm            |
|        | Roads                                     |       | Remediation well     |                 | Passive Gas Sampler  |
|        | Buried Cables                             |       | Vapor well           |                 | Rupture site         |
|        | DelinMapOutlines                          |       | Water obwell         |                 | Staff gage           |
|        |   |       |                      |                 | Soil CO2 Flux        |
|        |   |       |                      |                 | Suction lysimeter    |
|        |   |       |                      |                 | Tensiometer          |
|        |   |       |                      |                 | Unknown              |
|        |   |       |                      |                 | Water tube           |

## Explanation

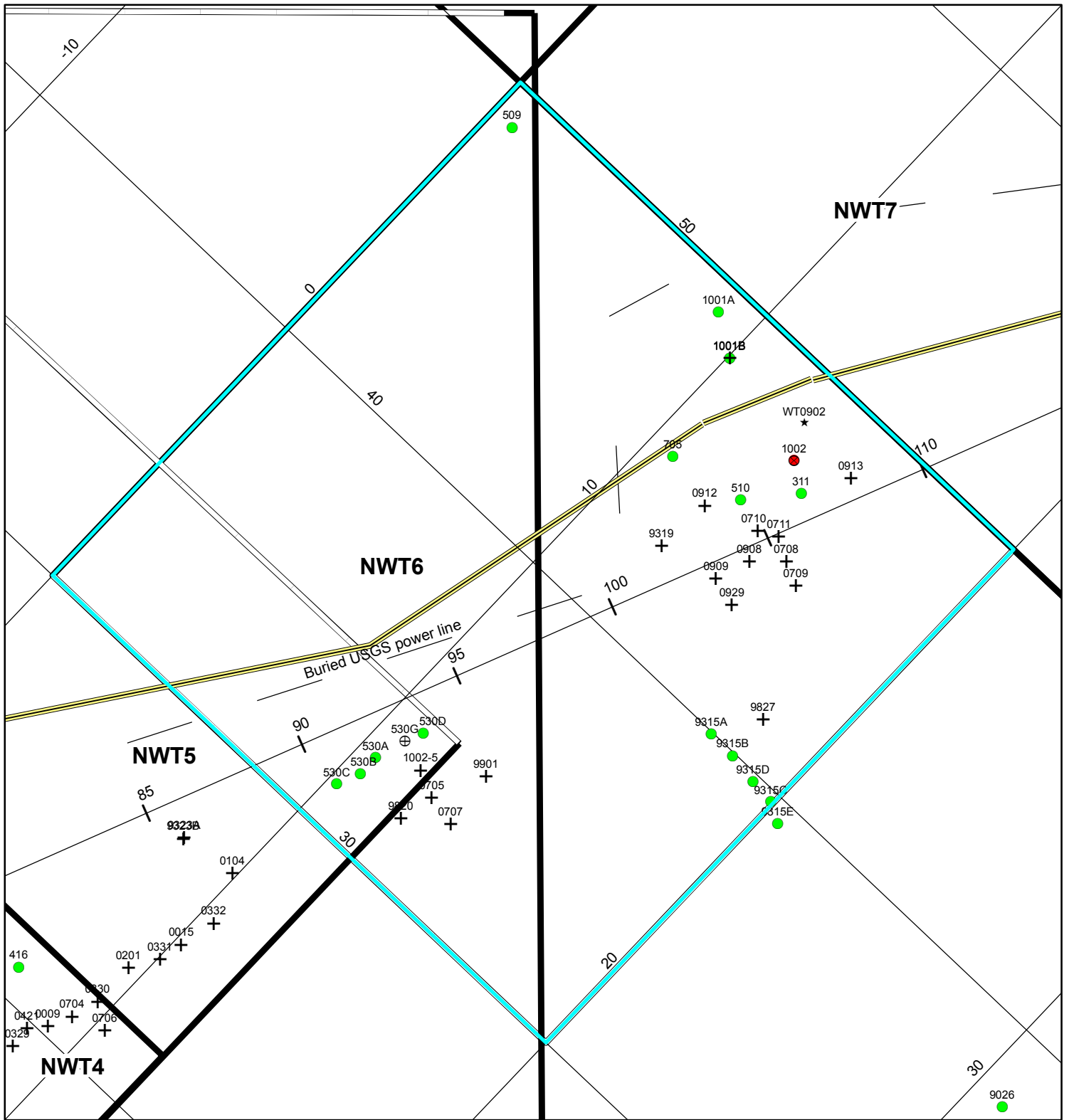






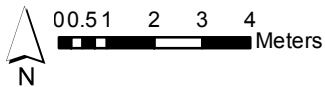






**Bemidji Crude Oil Spill Site  
NWT Site Map Series**

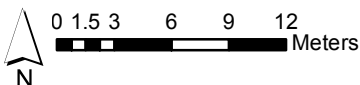
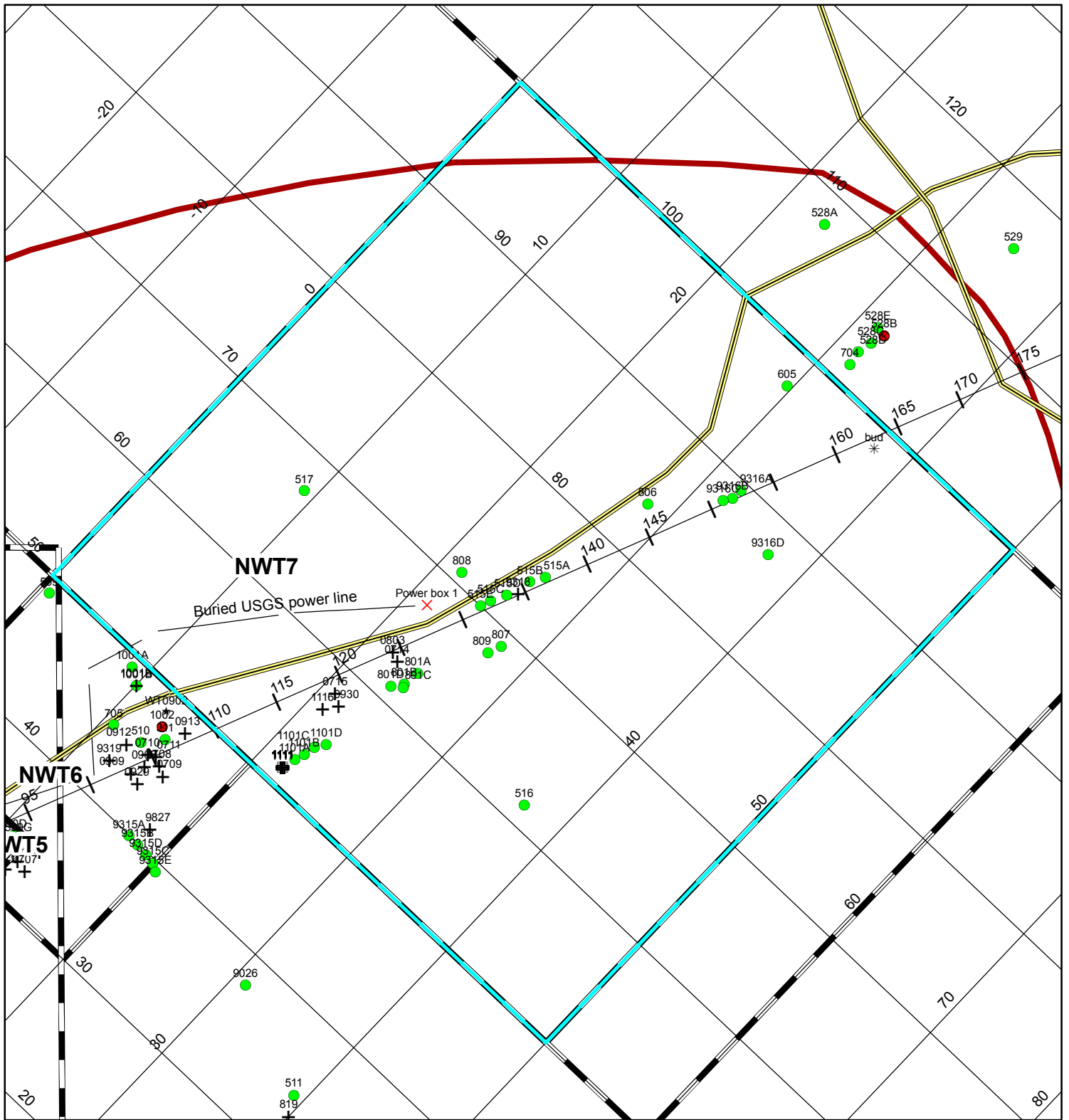
**NWT6**



- Enbridge Pipelines
- Distance from 421A
- Roads
- Buried Cables
- DelinMapOutlines
- Plumes**
- Floating crude oil on WT
- >10 ppb dissolved BTEX Concentration-1996
- Spray Zone
- Oil flowed over land surface to wetland

**Explanation**

- Wells**
- lake level
- Dialysis well
- Failed well install
- Geophysics well
- Multi-level well
- Oil and water obwell
- Remediation well
- Vapor well
- Water obwell
- Test Holes**
- test hole
- geoprobe test hole
- test hole, surface soil sample
- Other Equipment**
- Benchmark
- Geophysics electrode
- Power box
- Telephone box
- Lake Level
- Microcosm
- Passive Gas Sampler
- Rupture site
- Staff gage
- Soil CO2 Flux
- Suction lysimeter
- Tensiometer
- Unknown
- Water tube



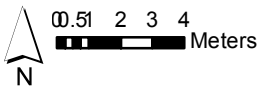
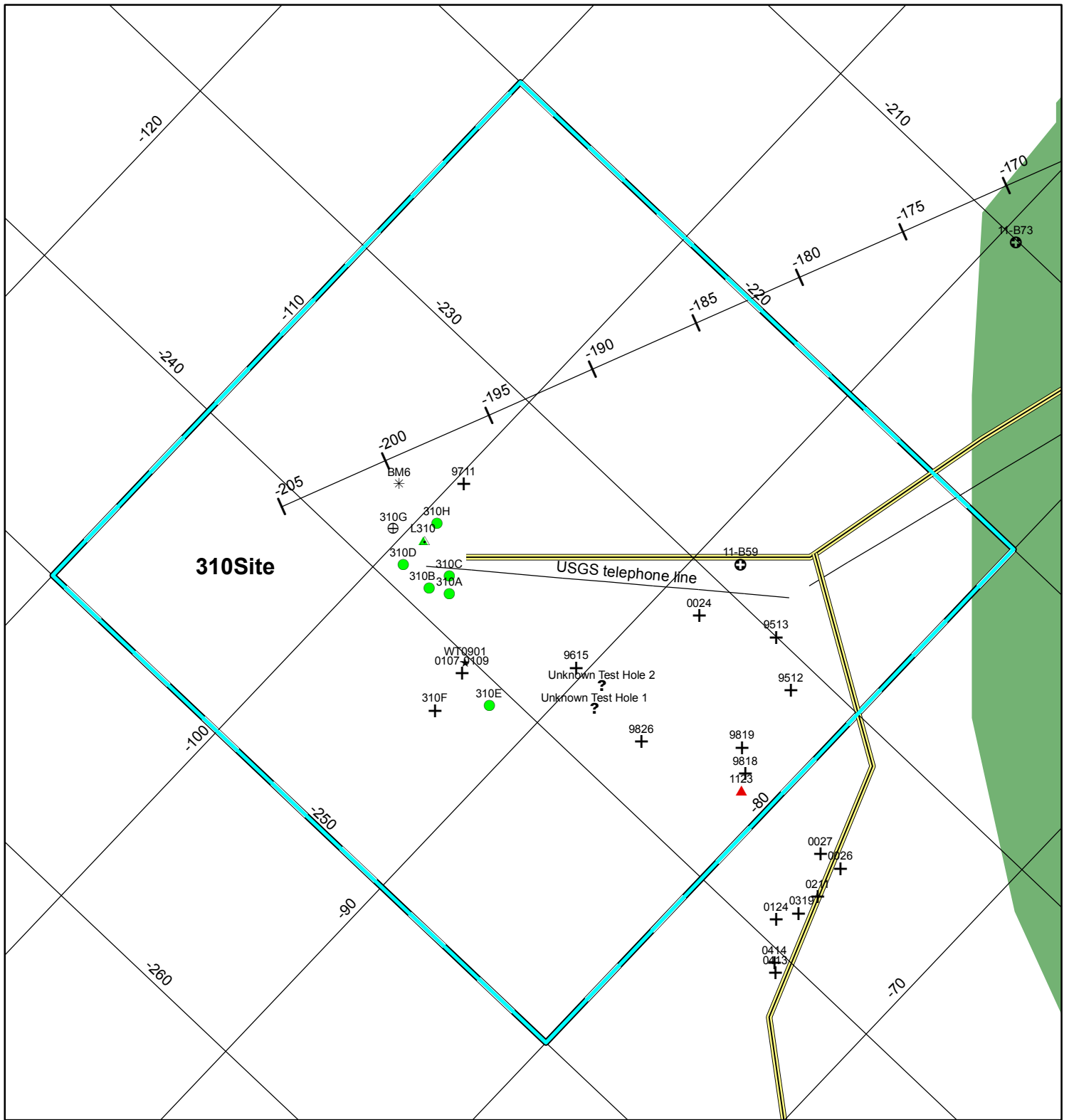
**Bemidji Crude Oil Spill Site  
NWT Site Map Series**

**NWT7**

**Explanation**

- |   |   |   |
|---|---|---|
| <ul style="list-style-type: none"> <li> Enbridge Pipelines</li> <li> Distance from 421A</li> <li> Roads</li> <li> Buried Cables</li> <li> DelinMapOutlines</li> <li><b>Plumes</b></li> <li> Floating crude oil on WT</li> <li> &gt;10 ppb dissolved BTEX Concentration-1996</li> <li> Spray Zone</li> <li> Oil flowed over land surface to wetland</li> </ul> | <ul style="list-style-type: none"> <li><b>Wells</b></li> <li> lake level</li> <li> Dialysis well</li> <li> Failed well install</li> <li> Geophysics well</li> <li> Multi-level well</li> <li> Oil and water obwell</li> <li> Remediation well</li> <li> Vapor well</li> <li> Water obwell</li> <li><b>Test Holes</b></li> <li> test hole</li> <li> geoprobe test hole</li> <li> test hole, surface soil sample</li> </ul> | <ul style="list-style-type: none"> <li><b>Other Equipment</b></li> <li> Benchmark</li> <li> Geophysics electrode</li> <li> Power box</li> <li> Telephone box</li> <li> Lake Level</li> <li> Microcosm</li> <li> Passive Gas Sampler</li> <li> Rupture site</li> <li> Staff gage</li> <li> Soil CO2 Flux</li> <li> Suction lysimeter</li> <li> Tensiometer</li> <li> Unknown</li> <li> Water tube</li> </ul> |
|---|---|---|



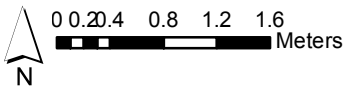
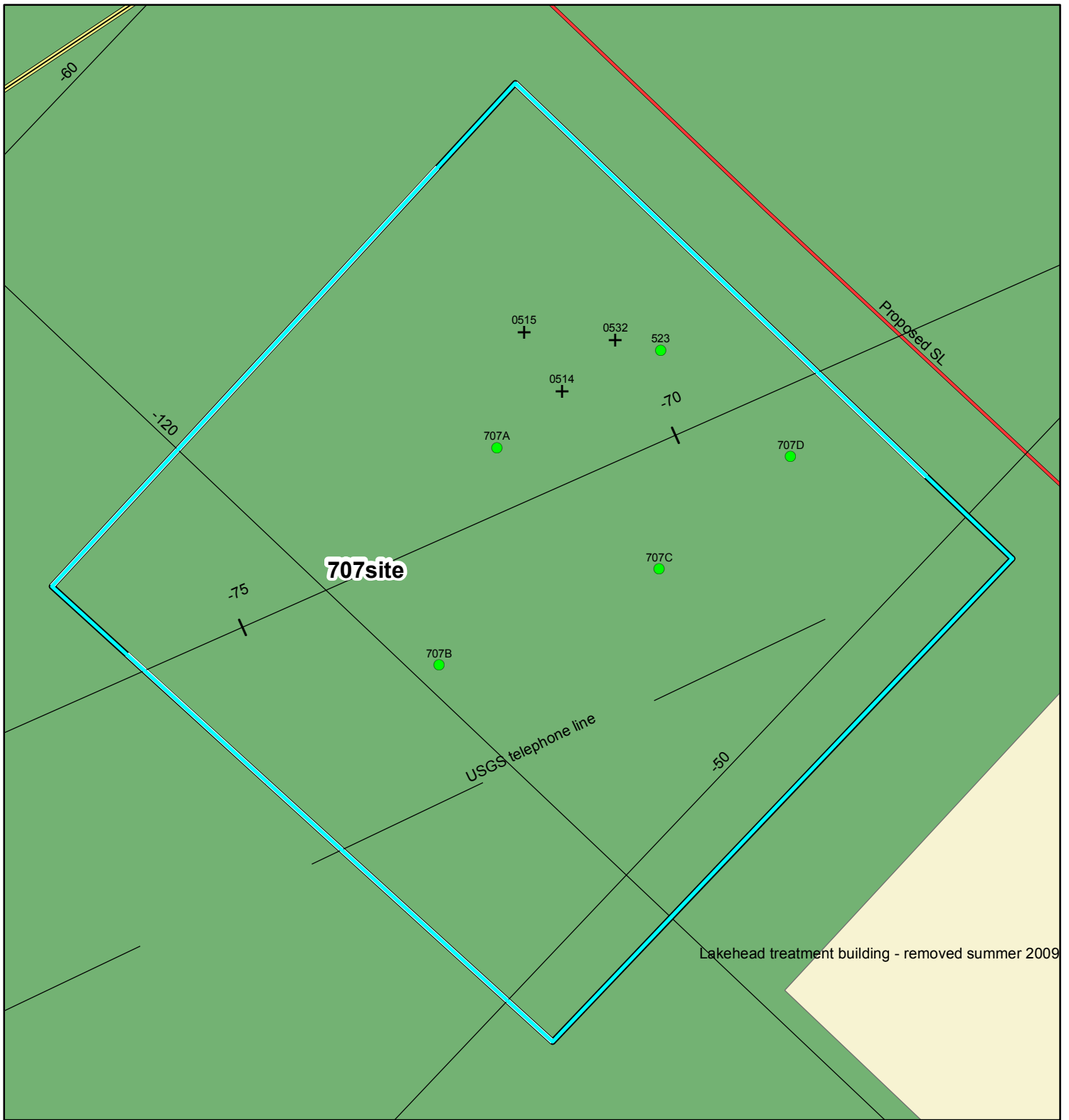


**Bemidji Crude Oil Spill Site  
NWT Site Map Series**

**310 site**

**Explanation**

- |   |   |   |
|---|---|---|
| <ul style="list-style-type: none"> <li> Enbridge Pipelines</li> <li> Distance from 421A</li> <li> Roads</li> <li> Buried Cables</li> <li> DelinMapOutlines</li> <li><b>Plumes</b></li> <li> Floating crude oil on WT</li> <li> &gt;10 ppb dissolved BTEX Concentration-1996</li> <li> Spray Zone</li> <li> Oil flowed over land surface to wetland</li> </ul> | <ul style="list-style-type: none"> <li><b>Wells</b></li> <li> lake level</li> <li> Dialysis well</li> <li> Failed well install</li> <li> Geophysics well</li> <li> Multi-level well</li> <li> Oil and water obwell</li> <li> Remediation well</li> <li> Vapor well</li> <li> Water obwell</li> <li><b>Test Holes</b></li> <li> test hole</li> <li> geoprobe test hole</li> <li> test hole, surface soil sample</li> </ul> | <ul style="list-style-type: none"> <li><b>Other Equipment</b></li> <li> Benchmark</li> <li> Geophysics electrode</li> <li> Power box</li> <li> Telephone box</li> <li> Lake Level</li> <li> Microcosm</li> <li> Passive Gas Sampler</li> <li> Rupture site</li> <li> Staff gage</li> <li> Soil CO2 Flux</li> <li> Suction lysimeter</li> <li> Tensiometer</li> <li> Unknown</li> <li> Water tube</li> </ul> |
|---|---|---|



**Bemidji Crude Oil Spill Site  
NWT Site Map Series**

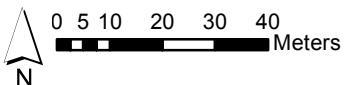
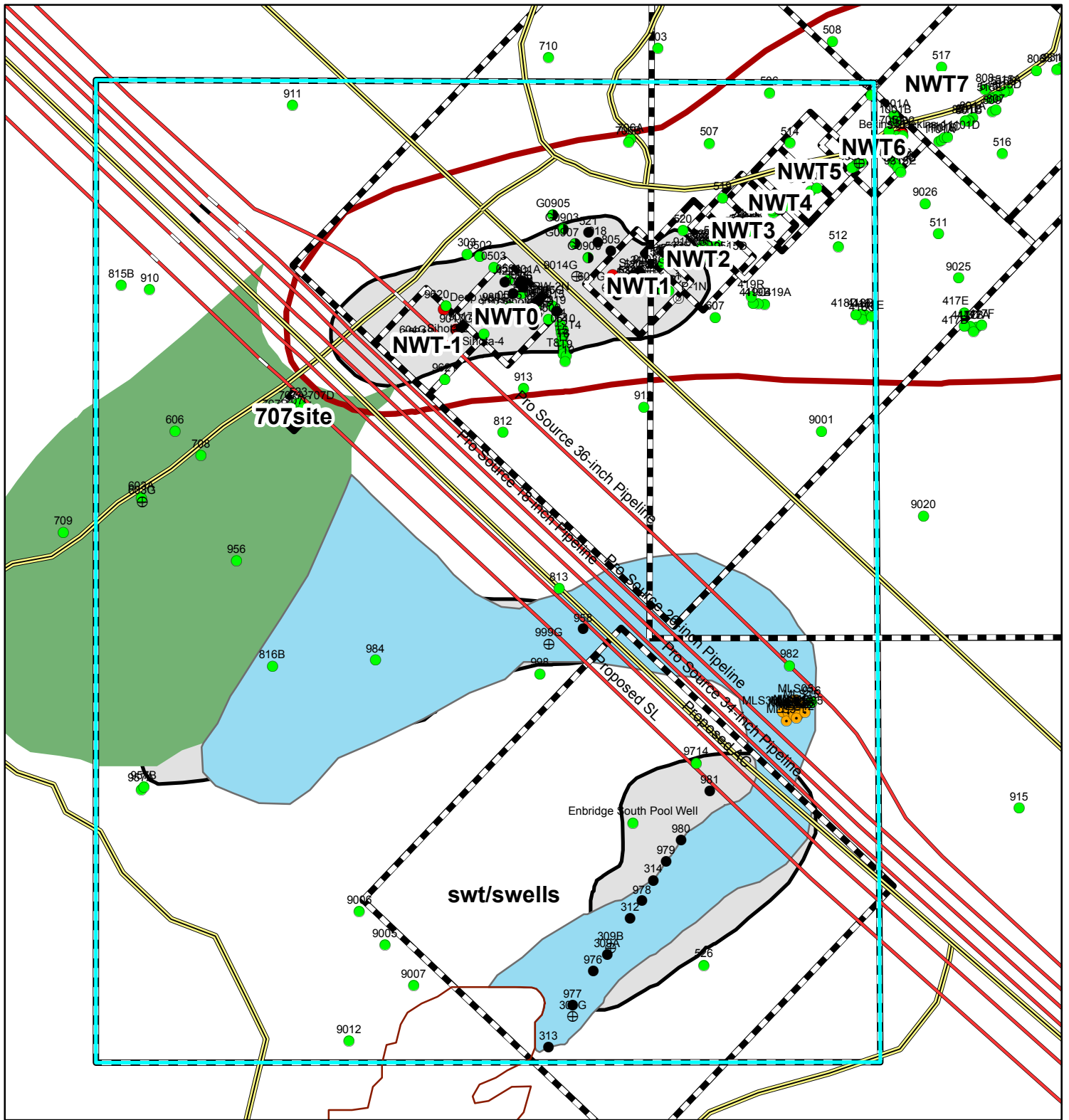
**707 site**

- Enbridge Pipelines
- Distance from 421A
- Roads
- Buried Cables
- DelinMapOutlines
- Plumes**
- Floating crude oil on WT
- >10 ppb dissolved BTEX Concentration-1996
- Spray Zone
- Oil flowed over land surface to wetland

**Explanation**

- Wells**
- lake level
- Dialysis well
- Failed well install
- Geophysics well
- Multi-level well
- Oil and water obwell
- Remediation well
- Vapor well
- Water obwell
- Test Holes**
- test hole
- geoprobe test hole
- test hole, surface soil sample
- Other Equipment**
- Benchmark
- Geophysics electrode
- Power box
- Telephone box
- Lake Level
- Microcosm
- Passive Gas Sampler
- Rupture site
- Staff gage
- Soil CO2 Flux
- Suction lysimeter
- Tensiometer
- Unknown
- Water tube



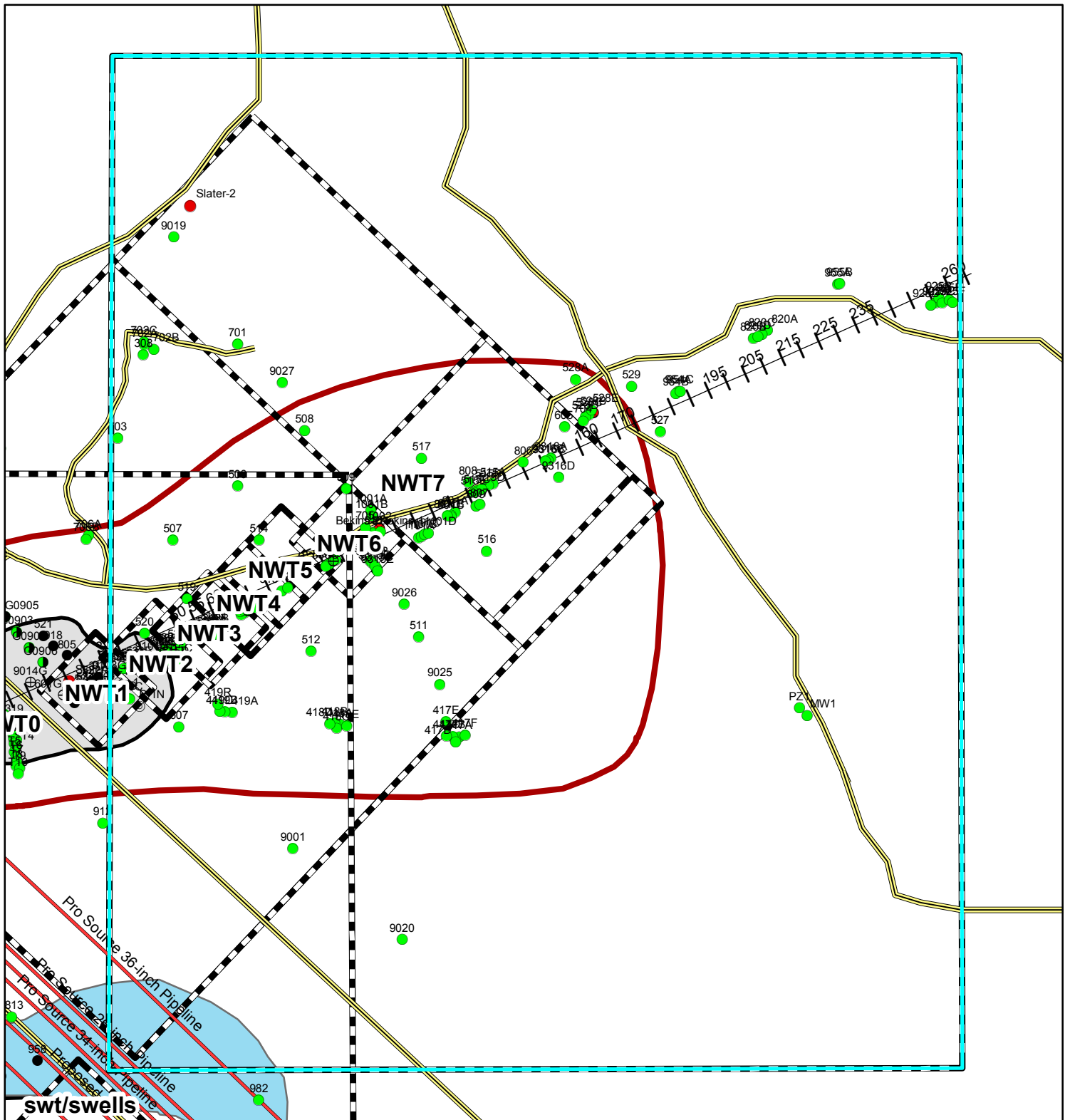


**Bemidji Crude Oil Spill Site  
NWT Site Map Series**

**Figure 4**

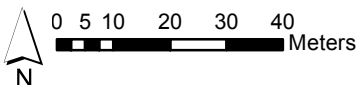
**Explanation**

- |   |                           |                      |
|---|---------------------------|----------------------|
| Enbridge Pipelines                        | 2012 Upcoming Drill Sites | <b>Wells</b>         |
| Roads                                     | DelinMapOutlines          | lake level           |
| <b>Plumes</b>                             | Floating crude oil on WT  | Dialysis well        |
| >10 ppb dissolved BTEX Concentration-1996 | Spray Zone                | Failed well install  |
| Oil flowed over land surface to wetland   |                           | Geophysics well      |
|   |                           | Multi-level well     |
|   |                           | Oil and water obwell |
|   |                           | Remediation well     |
|   |                           | Vapor well           |
|   |                           | Water obwell         |



**Bemidji Crude Oil Spill Site  
NWT Site Map Series**

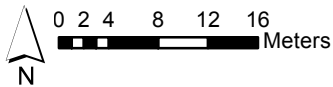
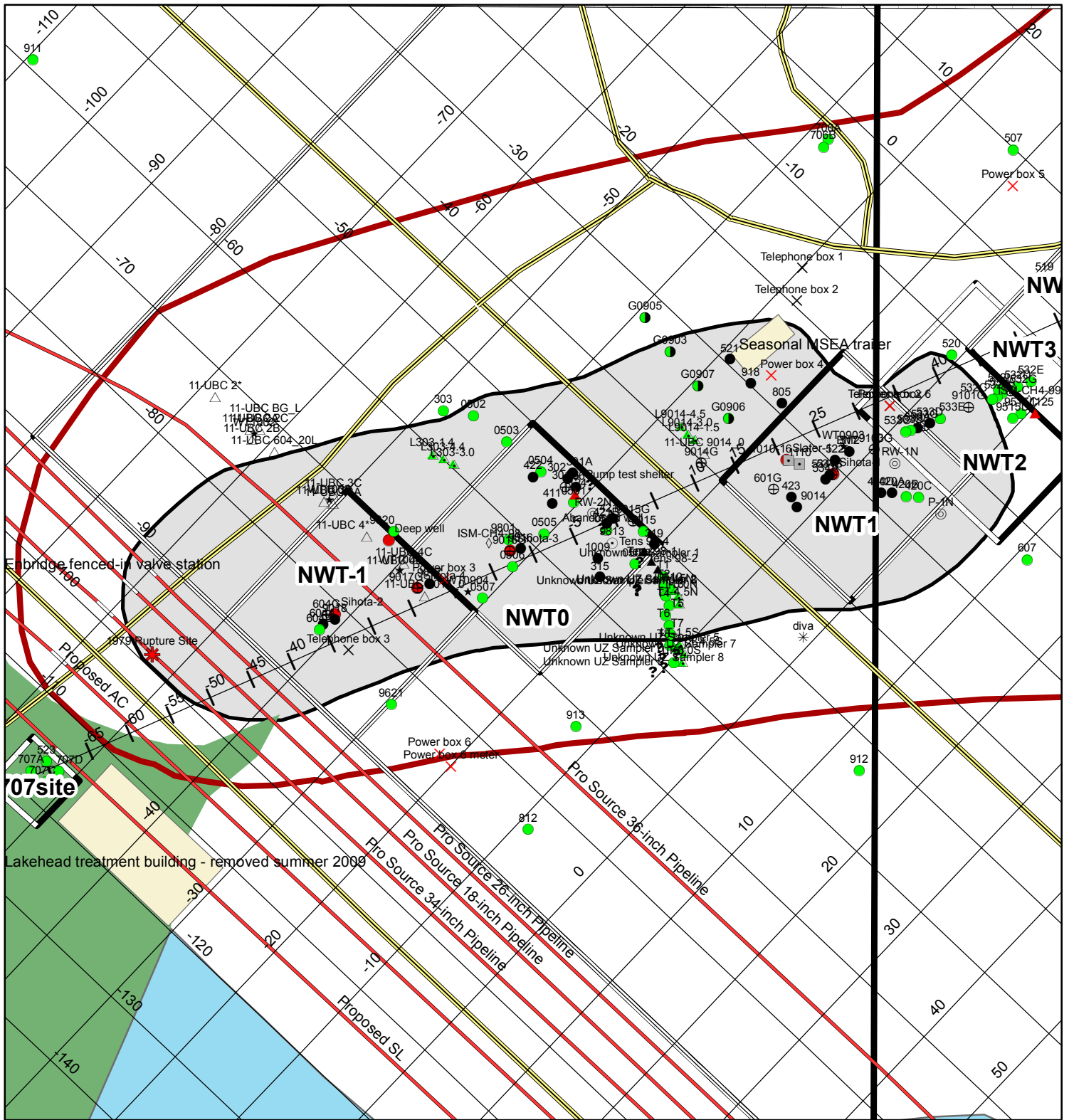
**Figure 5**



**Explanation**

- |   |                      |
|---|----------------------|
| Enbridge Pipelines                        | lake level           |
| Distance from 421A                        | Dialysis well        |
| 2012 Upcoming Drill Sites                 | Failed well install  |
| Roads                                     | Geophysics well      |
| DelinMapOutlines                          | Multi-level well     |
| <b>Plumes</b>                             | Oil and water obwell |
| Floating crude oil on WT                  | Remediation well     |
| >10 ppb dissolved BTEX Concentration-1996 | Vapor well           |
| Spray Zone                                | Water obwell         |
| Oil flowed over land surface to wetland   |                      |





### Explanation

- |   |  |   |
|---|--|---|
| <ul style="list-style-type: none"> <li> Enbridge Pipelines</li> <li> Distance from 421A</li> <li> 2012 Upcoming Drill Sites</li> <li> Roads</li> <li> DelinMapOutlines</li> <li> Plumes</li> <li> Floating crude oil on WT</li> <li> &gt;10 ppb dissolved BTEX Concentration-1996</li> <li> Spray Zone</li> <li> Oil flowed over land surface to wetland</li> </ul> | <ul style="list-style-type: none"> <li><b>Wells</b></li> <li> lake level</li> <li> Dialysis well</li> <li> Failed well install</li> <li> Geophysics well</li> <li> Multi-level well</li> <li> Oil and water obwell</li> <li> Remediation well</li> <li> Vapor well</li> <li> Water obwell</li> </ul> | <ul style="list-style-type: none"> <li><b>Other Equipment</b></li> <li> Benchmark</li> <li> Geophysics electrode</li> <li> Power box</li> <li> Telephone box</li> <li> Lake Level</li> <li> Microcosm</li> <li> Passive Gas Sampler</li> <li> Rupture site</li> <li> Staff gage</li> <li> Soil CO2 Flux</li> <li> Suction lysimeter</li> <li> Tensiometer</li> <li> Unknown</li> <li> Water tube</li> </ul> |
|---|--|---|

# Bemidji Crude Oil Spill Site NWT Site Map Series North Oil Body